

Regulatory Committee 21 February 2012

DEVELOPMENT MANAGEMENT PERFORMANCE STATISTICS

NATIONAL INDICATOR NI 157 - DETERMINING PLANNING APPLICATIONS

November 2011 Performance

In November 2011 there were 203 planning applications determined, with performance in each category as follows -

0% of major applications were determined within 13 weeks (0 out of 0 cases)
70% of minor applications were determined within 8 weeks (16 out of 23 cases)
74% of other applications were determined within 8 weeks (133 out of 180 cases)

For an explanation of the categories see Appendix I

December 2011 Performance

In December 2011 there were 152 planning applications determined, with performance in each category as follows -

0% of major applications were determined within 13 weeks (0 out of 3 cases)
83% of minor applications were determined within 8 weeks (19 out of 23 cases)
82% of other applications were determined within 8 weeks (103 out of 125 cases)

For an explanation of the categories see Appendix I

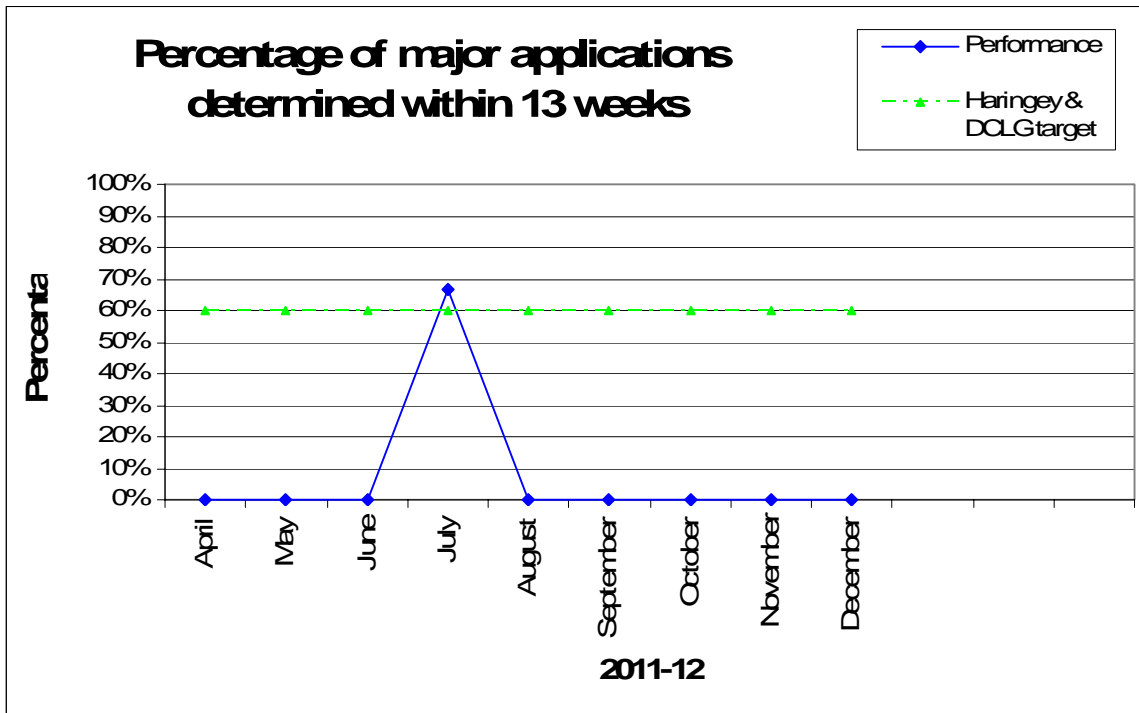
Year Performance – 2011/12

In the financial year 2011/12, up to the end of December, there were 1371 planning applications determined, with performance in each category as follows -

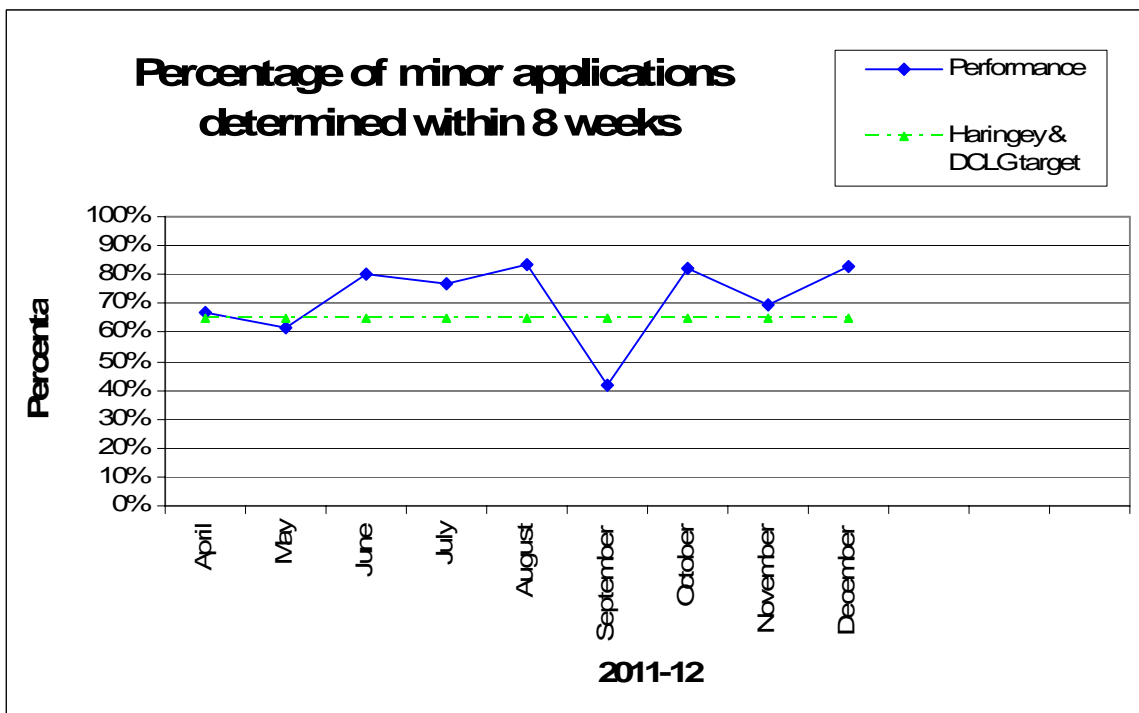
15% of major applications were determined within 13 weeks (2 out of 13)
71% of minor applications were determined within 8 weeks (168 out of 235 cases)
71% of other applications were determined within 8 weeks (792 out of 1122 cases)

The monthly performance for each of the categories is shown in the following graphs:

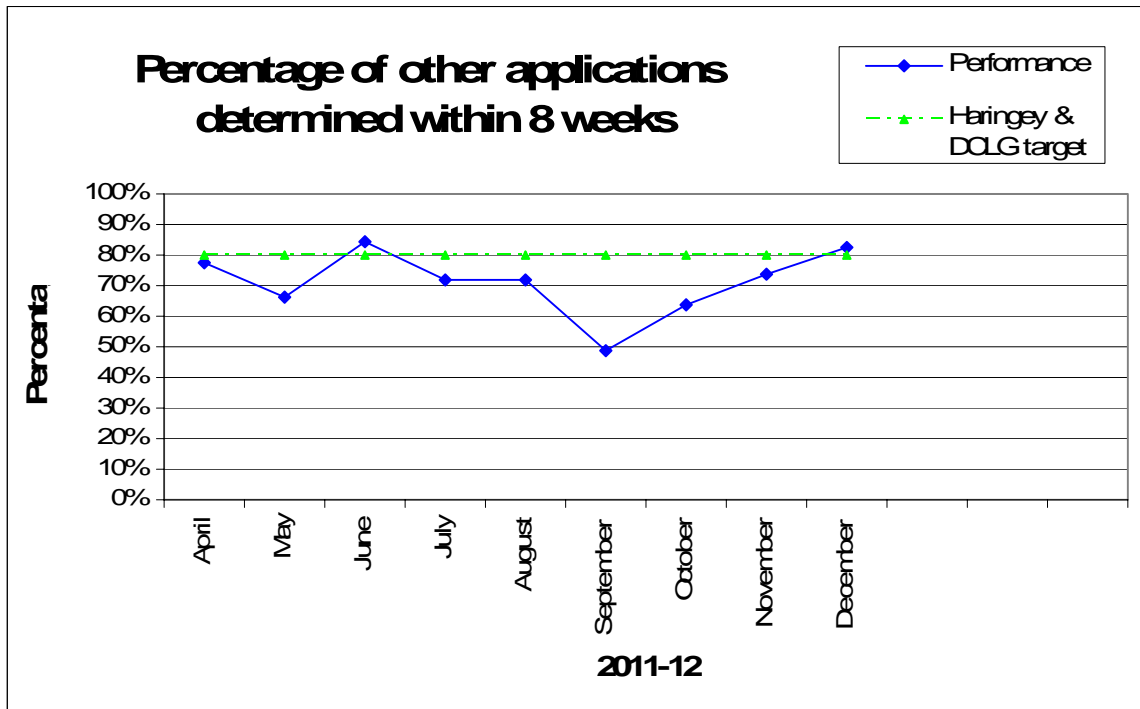
Major Applications 2011/12



Minor Applications 2011/12



Other applications 2011/12



Last 12 months performance – January 2011 to December 2011

In the 12 month period January 2011 to December 2011 there were 1738 planning applications determined, with performance in each category as follows -

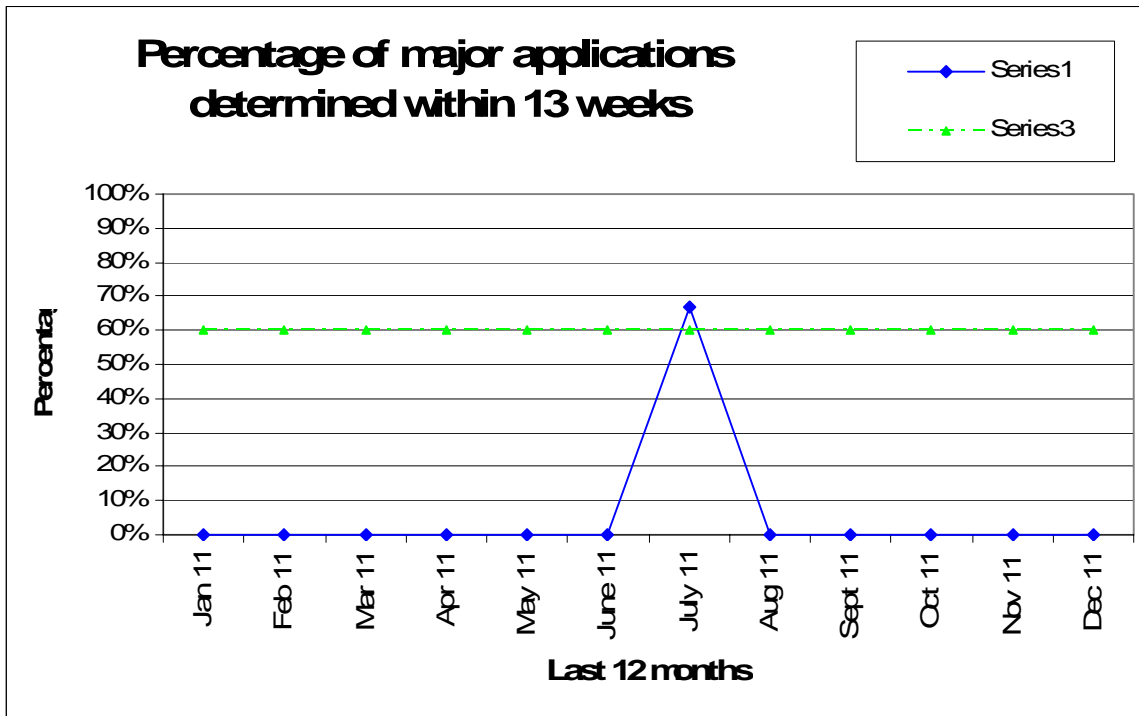
14% of major applications were determined within 13 weeks (2 out of 14)

72% of minor applications were determined within 8 weeks (231 out of 319 cases)

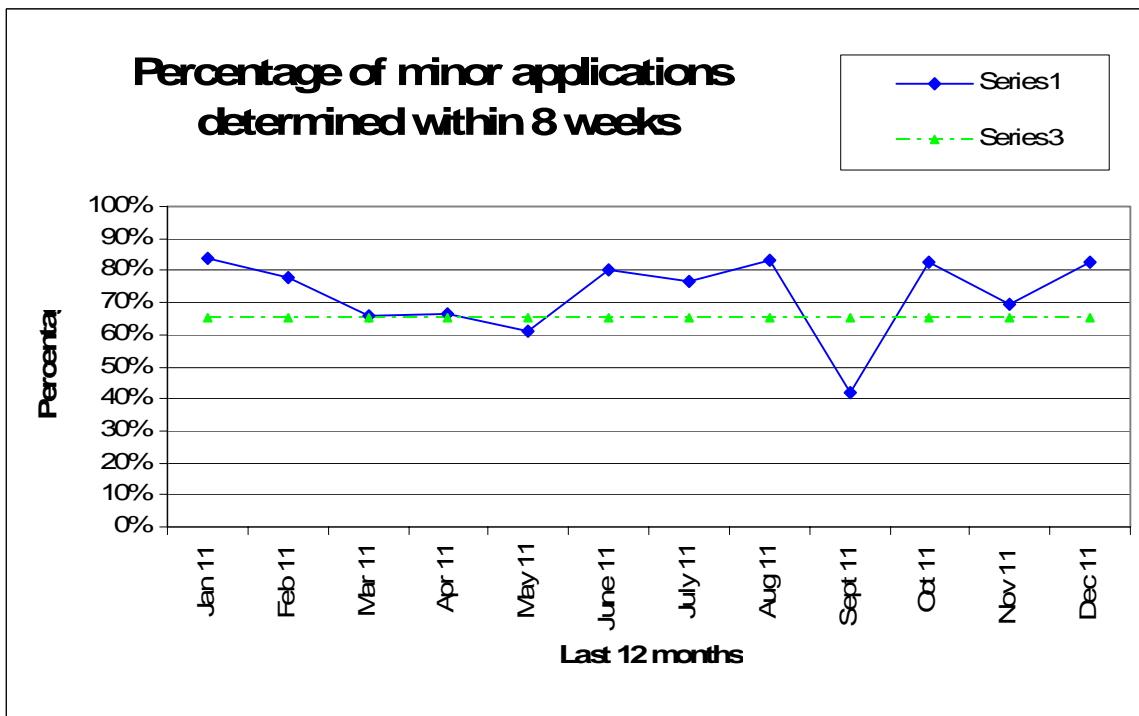
73% of other applications were determined within 8 weeks (1018 out of 1404 cases)

The 12 month performance for each category is shown in the following graphs:

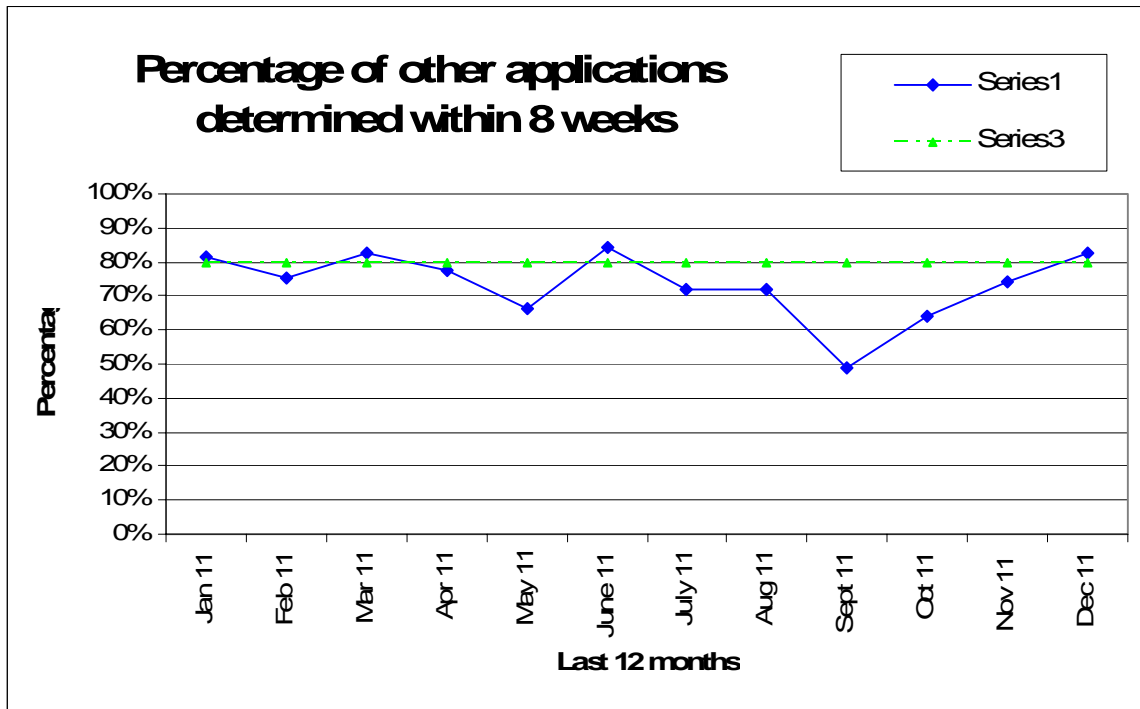
Major applications – last 12 months



Minor applications – last 12 months



Other applications – last 12 months



Background/Targets

NI 157 (formerly BV 109) is one of the Department for Communities and Local Government (DCLG) National Indicators for 2011/12.

It sets the following targets for determining planning applications:

- a. 60% of major applications within 13 weeks
- b. 65% of minor applications within 8 weeks
- c. 80% of other applications within 8 weeks

Haringey has set its own targets for 2011/12 in relation to NI 157. These are set out in Planning & Regeneration (P&R) Business Plan 2010-13 and are to determine:

- a. 60% of major applications within 13 weeks
- b. 65% of minor applications within 8 weeks
- c. 80% of other applications within 8 weeks

Appendix I

Explanation of categories

The NI 157 indicator covers planning applications included in the DCLG PS1/2 statutory return.

It *excludes* the following types of applications - TPO's, Telecommunications, Reserve Matters and Observations.

The definition for each of the category of applications is as follows:

Major applications -

For dwellings, where the number of dwellings to be constructed is 10 or more
For all other uses, where the floorspace to be built is 1,000 sq.m. or more, or where the site area is 1 hectare or more.

Minor application -

Where the development does not meet the requirement for a major application nor the definitions of Change of Use or Householder Development.

Other applications -

All other applications, *excluding* TPO's, Telecommunications, Reserve Matters and Observations.

DEVELOPMENT MANAGEMENT PERFORMANCE STATISTICS

GRANTED / REFUSAL RATES FOR DECISIONS

November 2011 Performance

In November 2011, excluding Certificate of Lawfulness applications, there were 176 applications determined of which:

82% were granted (145 out of 176)
18% were refused (31 out of 176)

December 2011 Performance

In December 2011, excluding Certificate of Lawfulness applications, there were 133 applications determined of which:

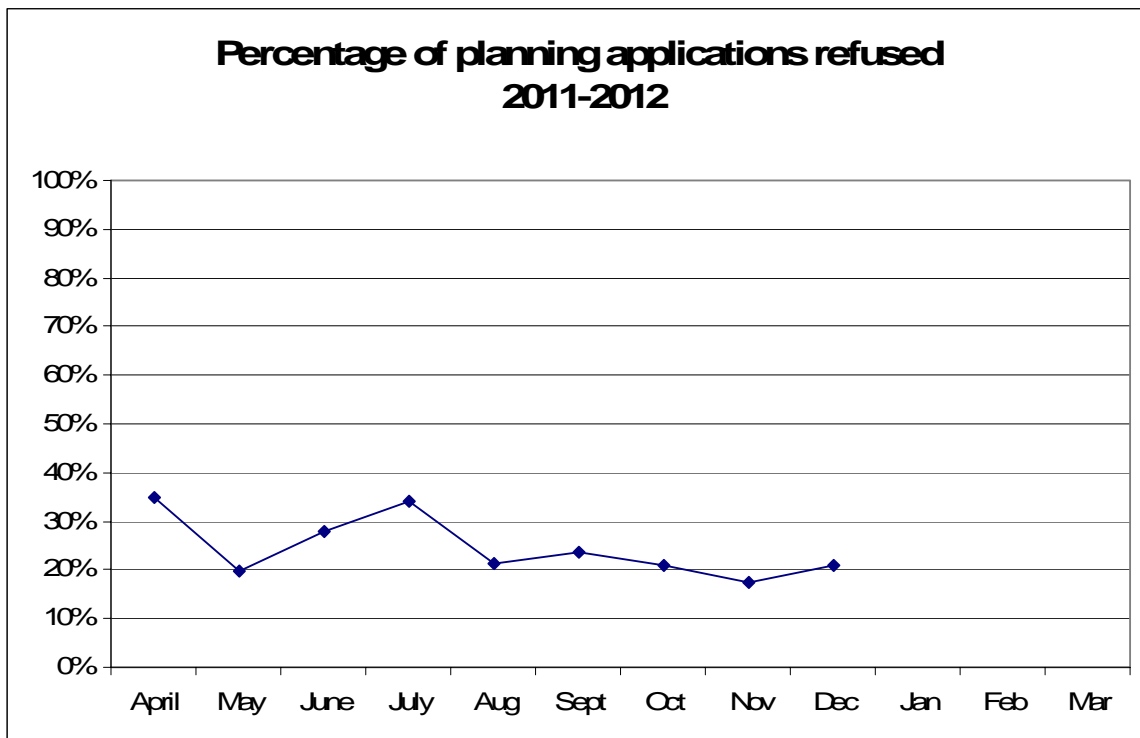
79% were granted (105 out of 133)
21% were refused (28 out of 133)

Year Performance – 2011/12

In the financial year 2010/11 up to the end of December, excluding Certificate of Lawfulness applications, there were 1149 applications determined of which:

76% were granted (874 out of 1149)
24% were refused (275 out of 1149)

The monthly refusal rate is shown on the following graph:



DEVELOPMENT MANAGEMENT PERFORMANCE STATISTICS

LOCAL INDICATOR (FORMERLY BV204) - APPEALS AGAINST REFUSAL OF PLANNING PERMISSION

November 2011 Performance

In November 2011 there were 12 planning appeals determined against Haringey's decision to refuse planning permission, with performance being as follows -

25% of appeals allowed on refusals (3 out of 12 cases)
75% of appeals dismissed on refusals (9 out of 12 cases)

December 2011 Performance

In December 2011 there were 3 planning appeals determined against Haringey's decision to refuse planning permission, with performance being as follows -

33% of appeals allowed on refusals (1 out of 3 cases)
67% of appeals dismissed on refusals (2 out of 3 cases)

January 2012 Performance

In January 2012 there were 11 planning appeals determined against Haringey's decision to refuse planning permission, with performance being as follows -

55% of appeals allowed on refusals (6 out of 11 cases)
45% of appeals dismissed on refusals (5 out of 11 cases)

Year Performance – 2010/11

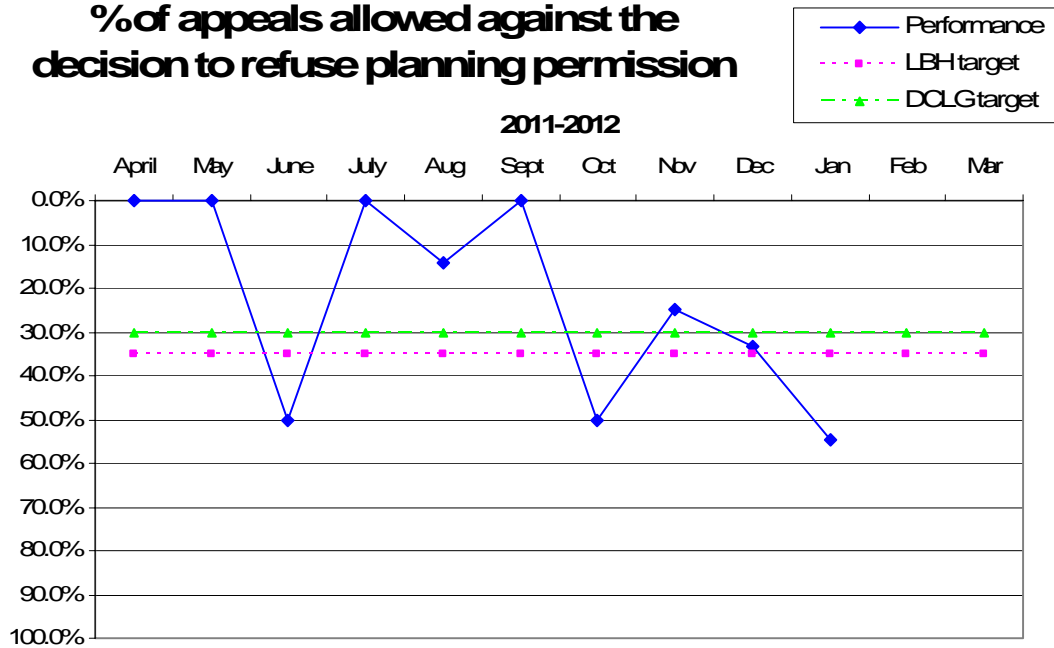
In the financial year 2011/12, up to the end of January, there were 54 planning appeals determined against Haringey's decision to refuse planning permission, with performance being as follows -

28% of appeals allowed on refusals (15 out of 54 cases)
72% of appeals dismissed on refusals (39 out of 54 cases)

The monthly performance is shown in the following graph:

% of appeals allowed against the decision to refuse planning permission

2011-2012



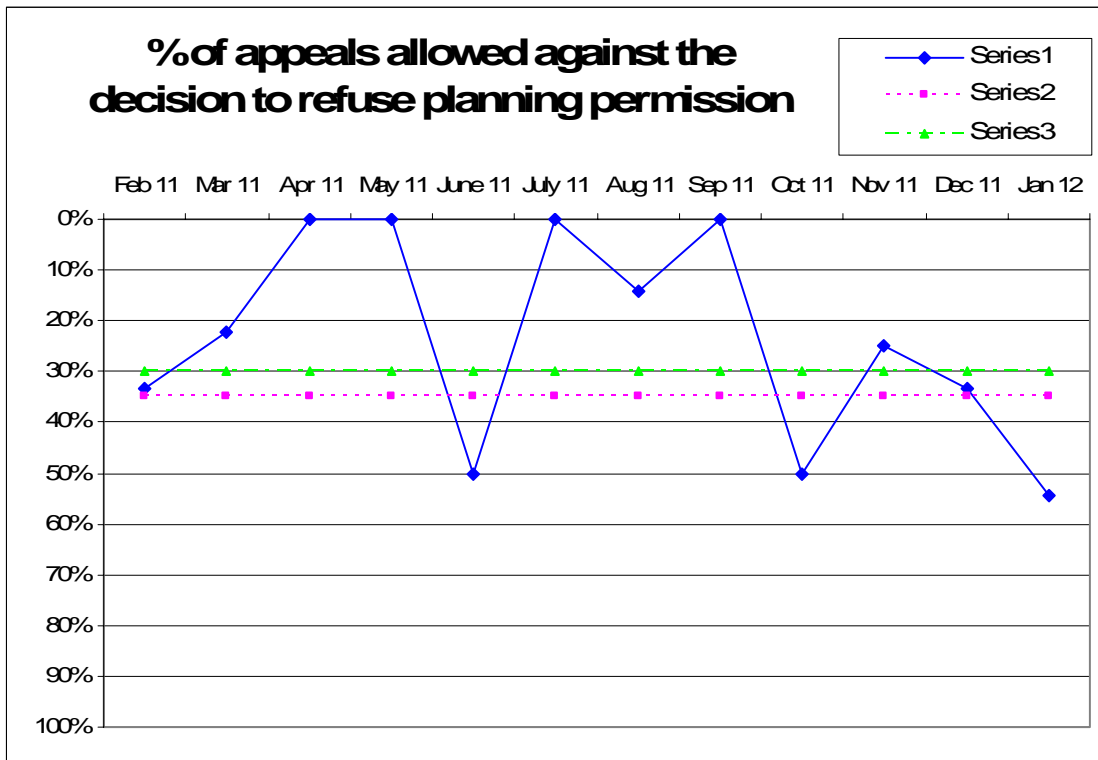
Last 12 months performance – February 2011 to January 2012

In the 12 month period February 2011 to January 2012 there were 69 planning appeals determined against Haringey's decision to refuse planning permission, with performance being as follows -

27% of appeals allowed on refusals (19 out of 69 cases)

73% of appeals dismissed on refusals (50 out of 69 cases)

The monthly performance for this period is shown in the following graph:



Background/Targets

This is no longer included in DCLG's National Indicator set. However it has been retained as a local indicator.

It sets a target for the percentage of appeals allowed against the authority's decision to refuse planning permission.

The target that was set by DCLG in 2007/08 was 30%^

Haringey has set its own target for 2011/12 in relation to this local indicator. This is set out in P&R Business Plan 2010-13.

The target set by Haringey for 2011/12 is 35%

(^ The lower the percentage of appeals allowed the better the performance)