

Regulatory Committee 24 November 2011

DEVELOPMENT MANAGEMENT PERFORMANCE STATISTICS

NATIONAL INDICATOR NI 157 - DETERMINING PLANNING APPLICATIONS

September 2011 Performance

In September 2011 there were 168 planning applications determined, with performance in each category as follows -

0% of major applications were determined within 13 weeks (0 out of 3 cases)
42% of minor applications were determined within 8 weeks (10 out of 24 cases)
49% of other applications were determined within 8 weeks (69 out of 141 cases)

For an explanation of the categories see Appendix I

October 2011 Performance

In October 2011 there were 154 planning applications determined, with performance in each category as follows -

0% of major applications were determined within 13 weeks (0 out of 1 cases)
82% of minor applications were determined within 8 weeks (14 out of 17 cases)
64% of other applications were determined within 8 weeks (87 out of 136 cases)

For an explanation of the categories see Appendix I

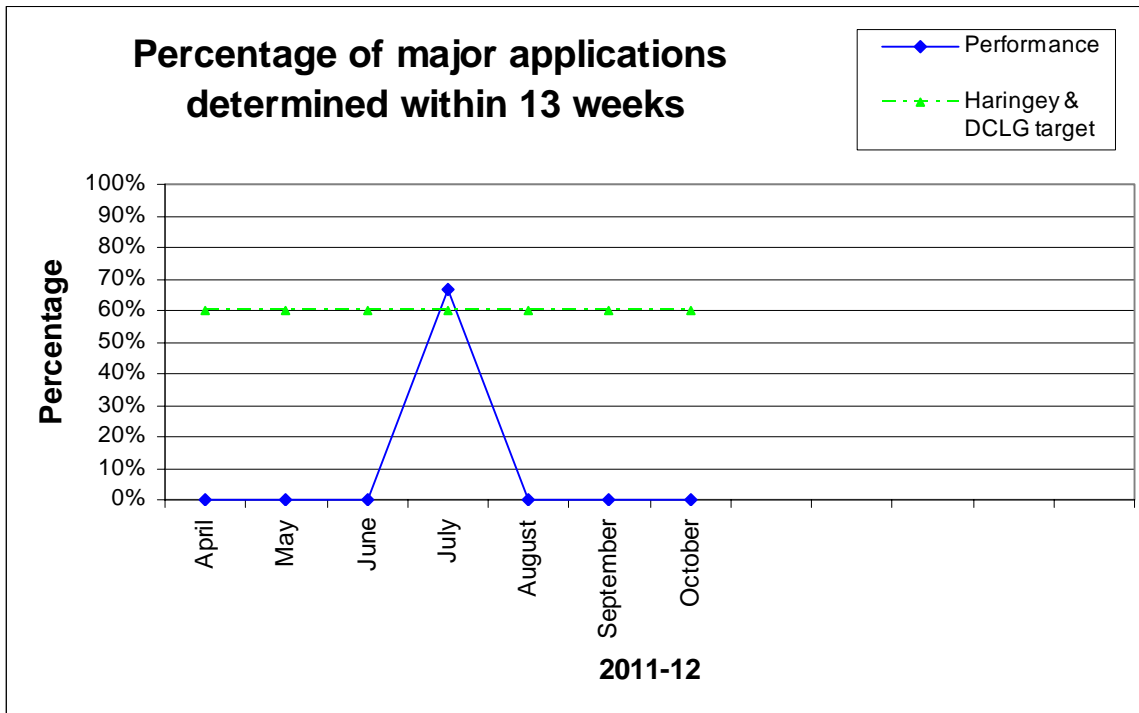
Year Performance – 2011/12

In the financial year 2011/12, up to the end of October, there were 1016 planning applications determined, with performance in each category as follows -

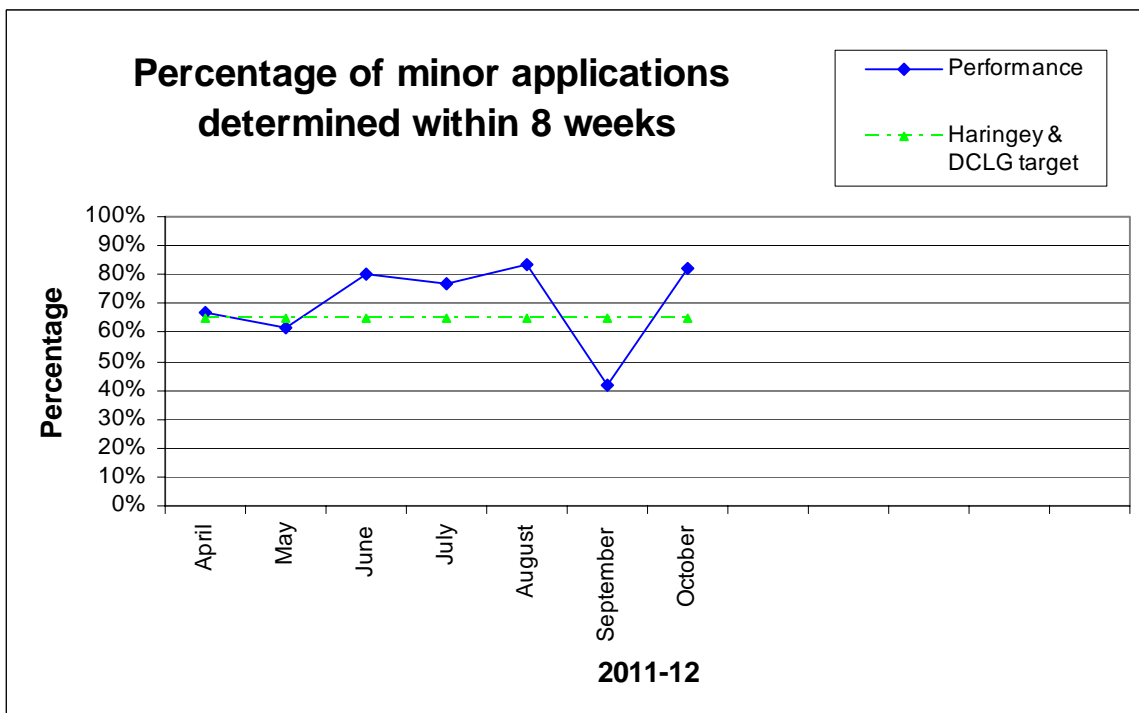
33% of major applications were determined within 13 weeks (2 out of 10)
74% of minor applications were determined within 8 weeks (133 out of 189 cases)
74% of other applications were determined within 8 weeks (556 out of 817 cases)

The monthly performance for each of the categories is shown in the following graphs:

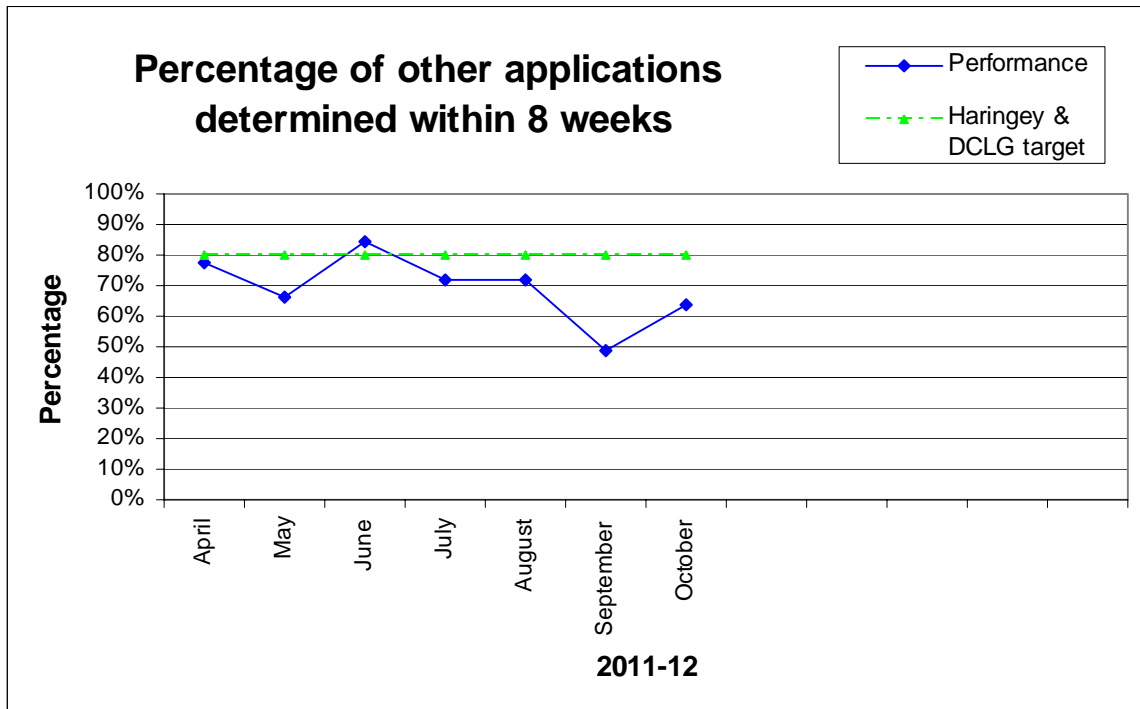
Major Applications 2011/12



Minor Applications 2011/12



Other applications 2011/12



Last 12 months performance – November 2010 to October 2011

In the 12 month period November 2010 to October 2011 there were 1763 planning applications determined, with performance in each category as follows -

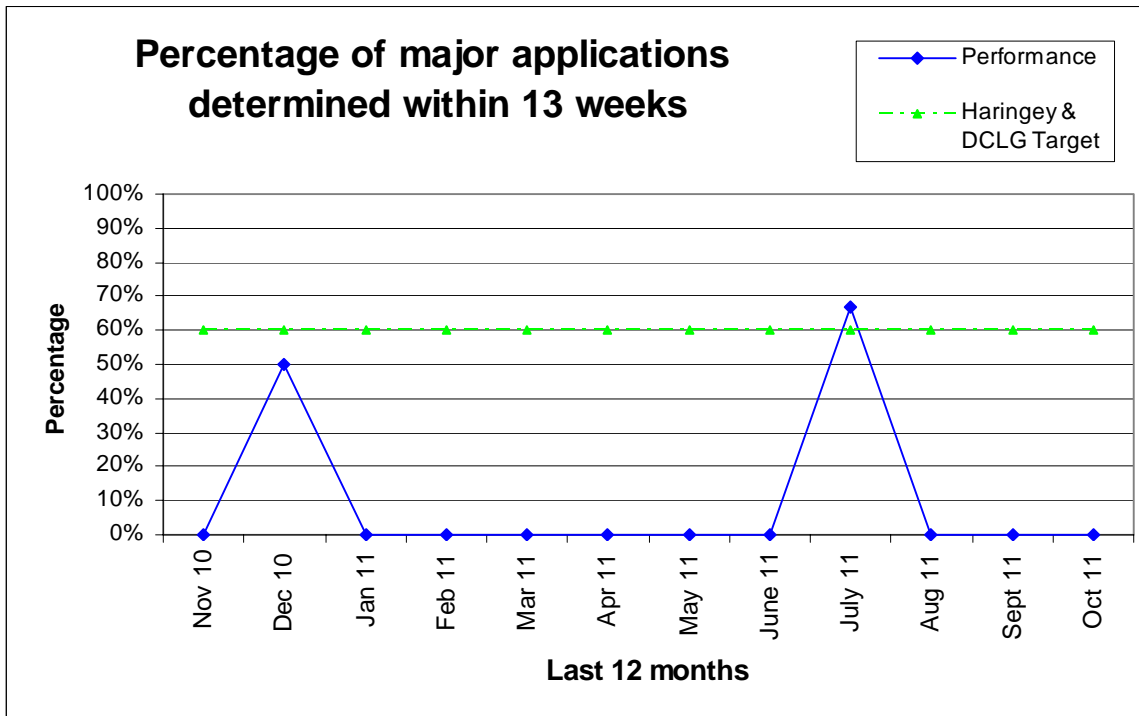
23% of major applications were determined within 13 weeks (3 out of 13)

74% of minor applications were determined within 8 weeks (251 out of 337 cases)

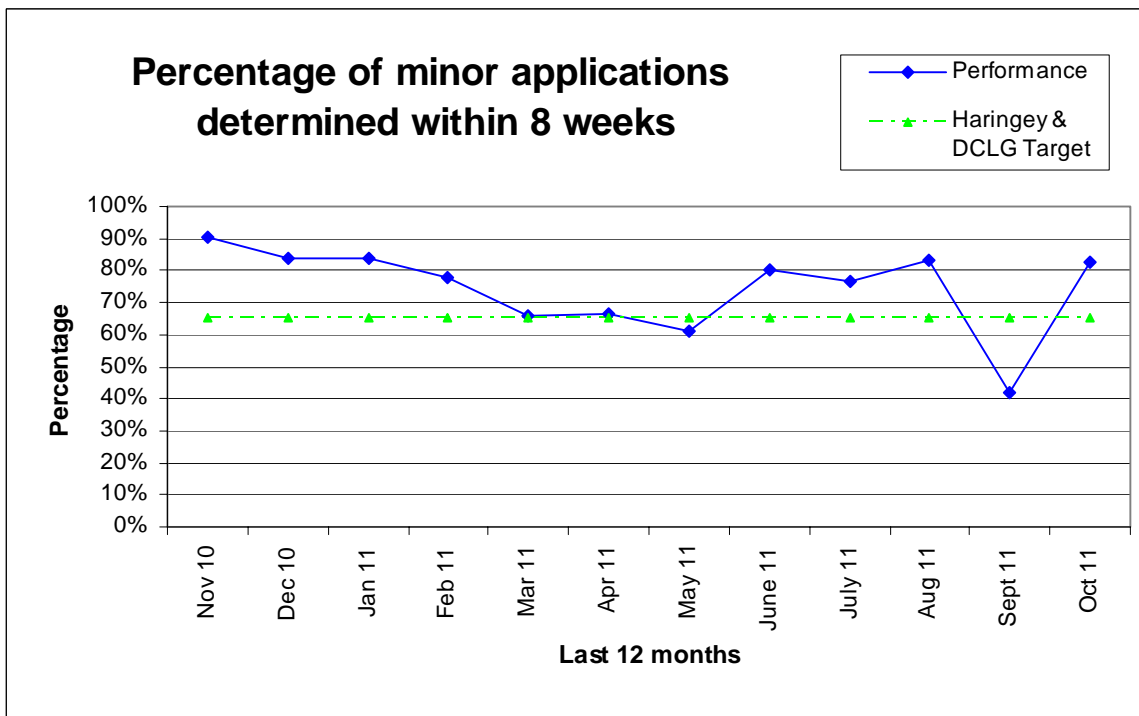
74% of other applications were determined within 8 weeks (1052 out of 1413 cases)

The 12 month performance for each category is shown in the following graphs:

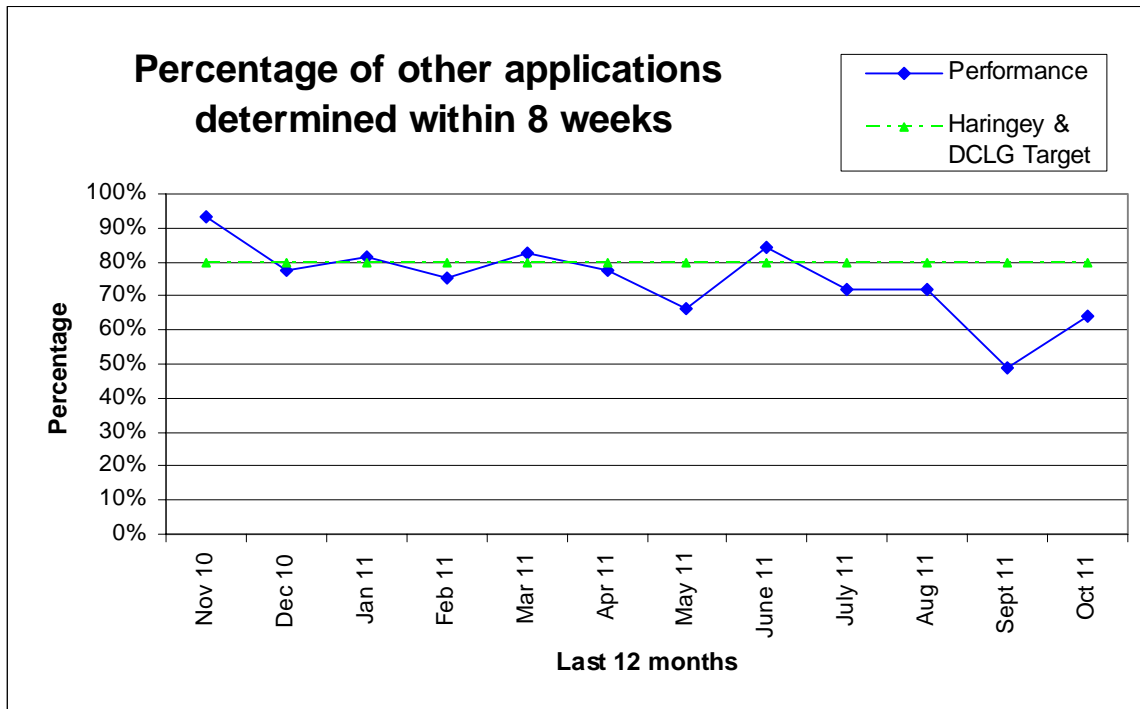
Major applications – last 12 months



Minor applications – last 12 months



Other applications – last 12 months



Background/Targets

NI 157 (formerly BV 109) is one of the Department for Communities and Local Government (DCLG) National Indicators for 2011/12.

It sets the following targets for determining planning applications:

- a. 60% of major applications within 13 weeks
- b. 65% of minor applications within 8 weeks
- c. 80% of other applications within 8 weeks

Haringey has set its own targets for 2011/12 in relation to NI 157. These are set out in Planning & Regeneration (P&R) Business Plan 2010-13 and are to determine:

- a. 60% of major applications within 13 weeks
- b. 65% of minor applications within 8 weeks
- c. 80% of other applications within 8 weeks

Appendix I

Explanation of categories

The NI 157 indicator covers planning applications included in the DCLG PS1/2 statutory return.

It *excludes* the following types of applications - TPO's, Telecommunications, Reserve Matters and Observations.

The definition for each of the category of applications is as follows:

Major applications -

For dwellings, where the number of dwellings to be constructed is 10 or more
For all other uses, where the floorspace to be built is 1,000 sq.m. or more, or where the site area is 1 hectare or more.

Minor application -

Where the development does not meet the requirement for a major application nor the definitions of Change of Use or Householder Development.

Other applications -

All other applications, *excluding* TPO's, Telecommunications, Reserve Matters and Observations.

DEVELOPMENT MANAGEMENT PERFORMANCE STATISTICS

GRANTED / REFUSAL RATES FOR DECISIONS

September 2011 Performance

In September 2011, excluding Certificate of Lawfulness applications, there were 139 applications determined of which:

76% were granted (106 out of 139)

24% were refused (33 out of 139)

October 2011 Performance

In October 2011, excluding Certificate of Lawfulness applications, there were 124 applications determined of which:

79% were granted (98 out of 124)

21% were refused (26 out of 124)

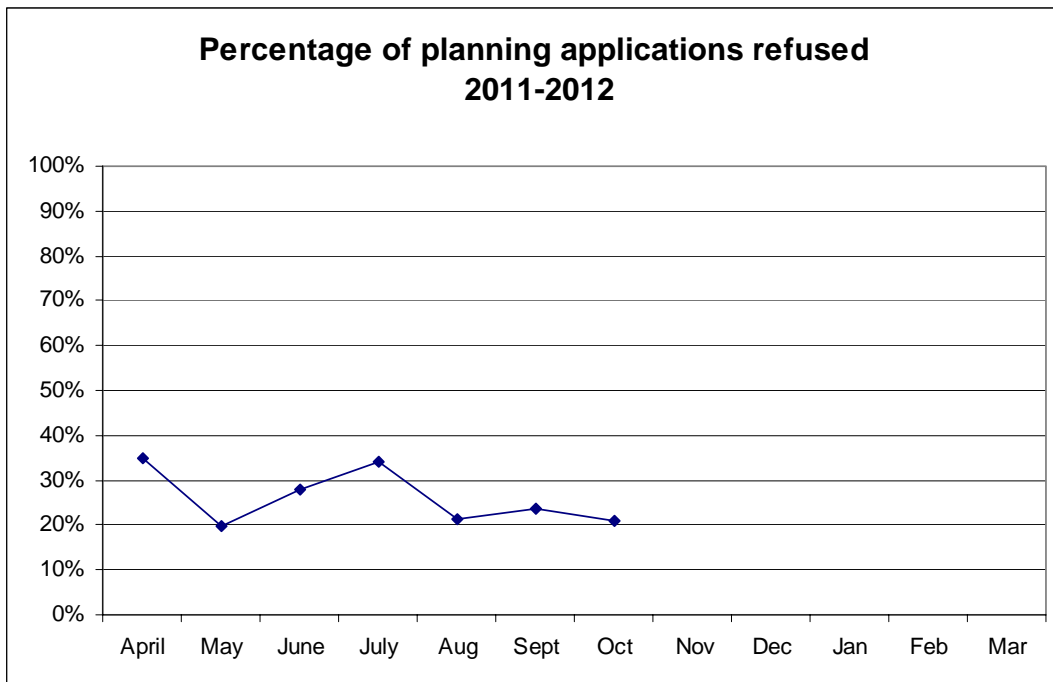
Year Performance – 2011/12

In the financial year 2010/11 up to the end of October, excluding Certificate of Lawfulness applications, there were 840 applications determined of which:

74% were granted (624 out of 840)

26% were refused (216 out of 840)

The monthly refusal rate is shown on the following graph:



DEVELOPMENT MANAGEMENT PERFORMANCE STATISTICS

LOCAL INDICATOR (FORMERLY BV204) - APPEALS AGAINST REFUSAL OF PLANNING PERMISSION

September 2011 Performance

In September 2011 there were 2 planning appeals determined against Haringey's decision to refuse planning permission, with performance being as follows -

0% of appeals allowed on refusals (0 out of 2 case)
100% of appeals dismissed on refusals (2 out of 2 case)

October 2011 Performance

In October 2011 there were 6 planning appeals determined against Haringey's decision to refuse planning permission, with performance being as follows -

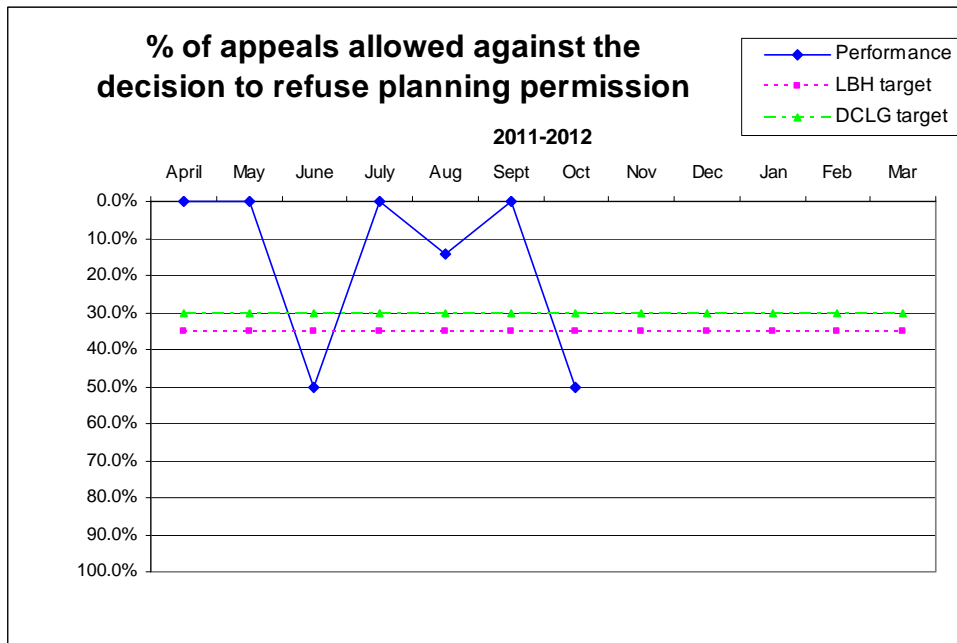
50% of appeals allowed on refusals (3 out of 6 case)
50% of appeals dismissed on refusals (3 out of 6 case)

Year Performance – 2010/11

In the financial year 2011/12, up to the end of August, there were 28 planning appeals determined against Haringey's decision to refuse planning permission, with performance being as follows -

18% of appeals allowed on refusals (5 out of 28 cases)
82% of appeals dismissed on refusals (23 out of 28 cases)

The monthly performance is shown in the following graph:



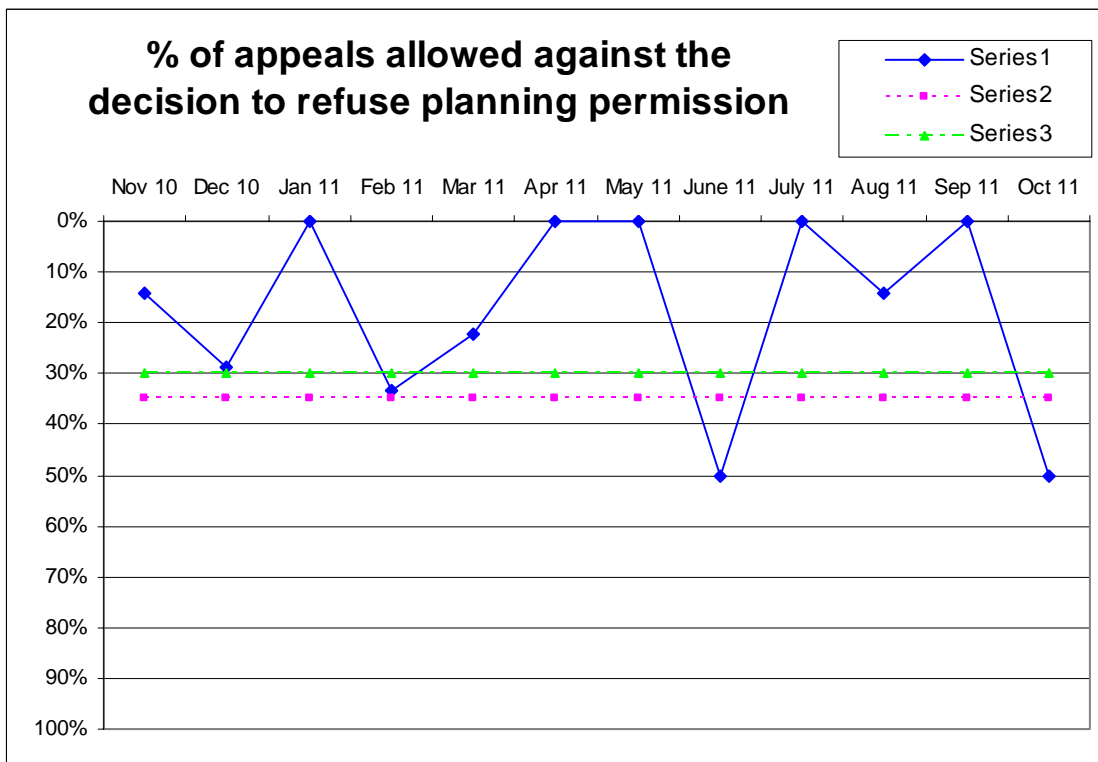
Last 12 months performance – November 2010 to October 2011

In the 12 month period November 2010 to October 2011 there were 62 planning appeals determined against Haringey's decision to refuse planning permission, with performance being as follows -

19% of appeals allowed on refusals (12 out of 62 cases)

81% of appeals dismissed on refusals (50 out of 62 cases)

The monthly performance for this period is shown in the following graph:



Background/Targets

This is no longer included in DCLG's National Indicator set. However it has been retained as a local indicator.

It sets a target for the percentage of appeals allowed against the authority's decision to refuse planning permission.

The target that was set by DCLG in 2007/08 was 30%^

Haringey has set its own target for 2011/12 in relation to this local indicator. This is set out in P&R Business Plan 2010-13.

The target set by Haringey for 2011/12 is 35%

(^ The lower the percentage of appeals allowed the better the performance)