

Planning Committee 12 September 2011

DEVELOPMENT MANAGEMENT PERFORMANCE STATISTICS

NATIONAL INDICATOR NI 157 - DETERMINING PLANNING APPLICATIONS

July 2011 Performance

In July 2011 there were 144 planning applications determined, with performance in each category as follows -

67% of major applications were determined within 13 weeks (2 out of 3 cases)

77% of minor applications were determined within 8 weeks (20 out of 26 cases)

72% of other applications were determined within 8 weeks (83 out of 115 cases)

For an explanation of the categories see Appendix I

Year Performance – 2011/12

In the financial year 2011/12, up to the end of July, there were 566 planning applications determined, with performance in each category as follows -

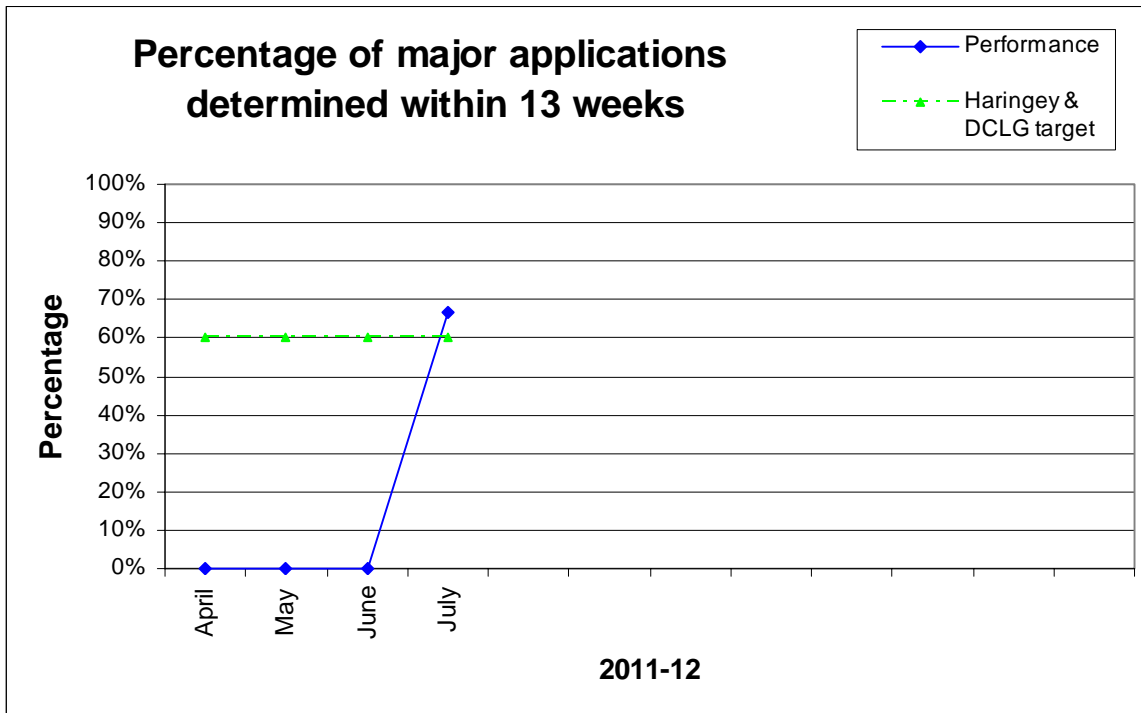
40% of major applications were determined within 13 weeks (2 out of 5)

72% of minor applications were determined within 8 weeks (89 out of 124 cases)

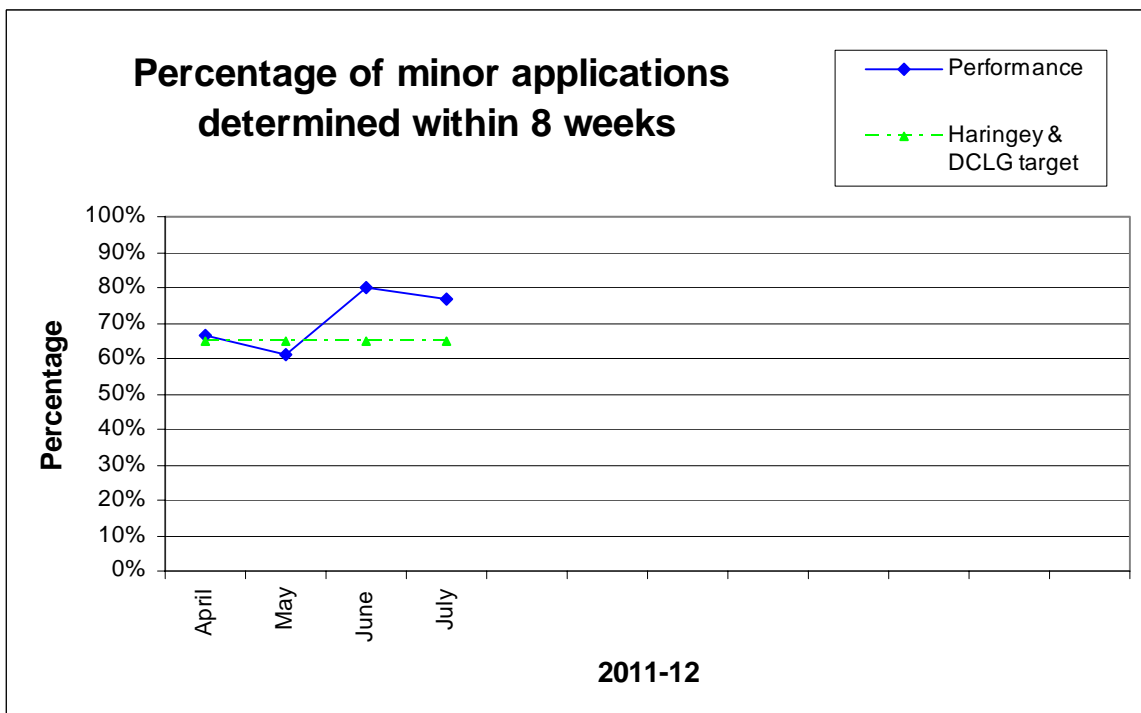
75% of other applications were determined within 8 weeks (326 out of 437 cases)

The monthly performance for each of the categories is shown in the following graphs:

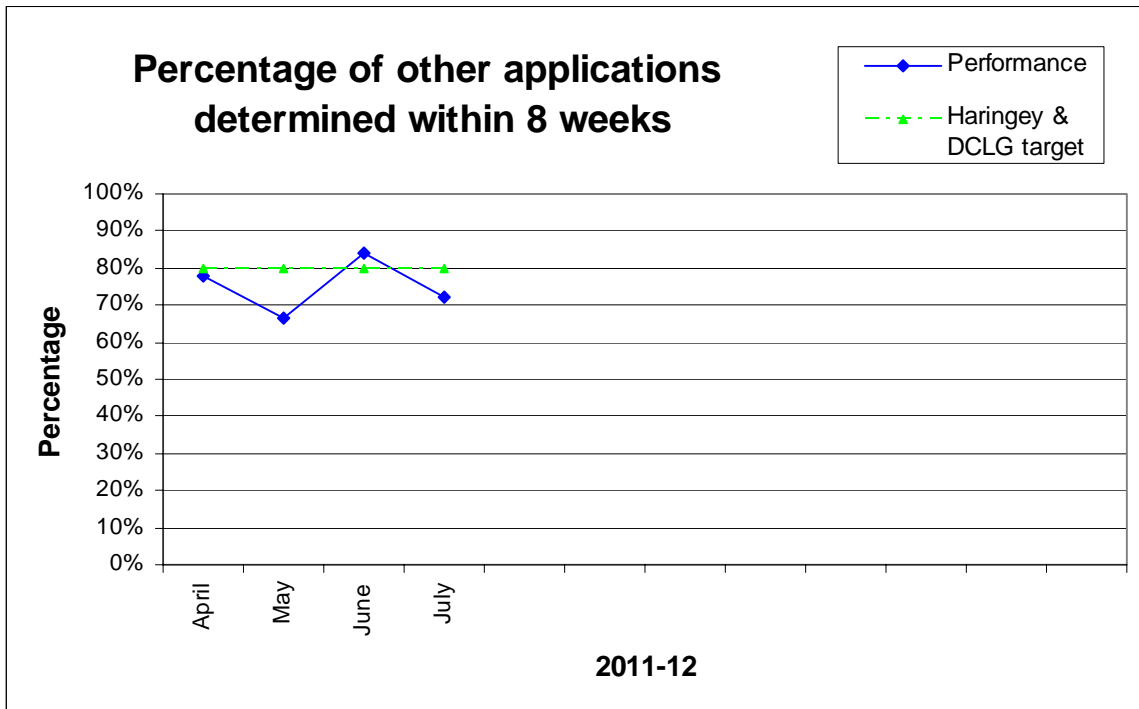
Major Applications 2011/12



Minor Applications 2011/12



Other applications 2011/12



Last 12 months performance – August 2010 to July 2011

In the 12 month period August 2010 to July 2011 there were 1770 planning applications determined, with performance in each category as follows -

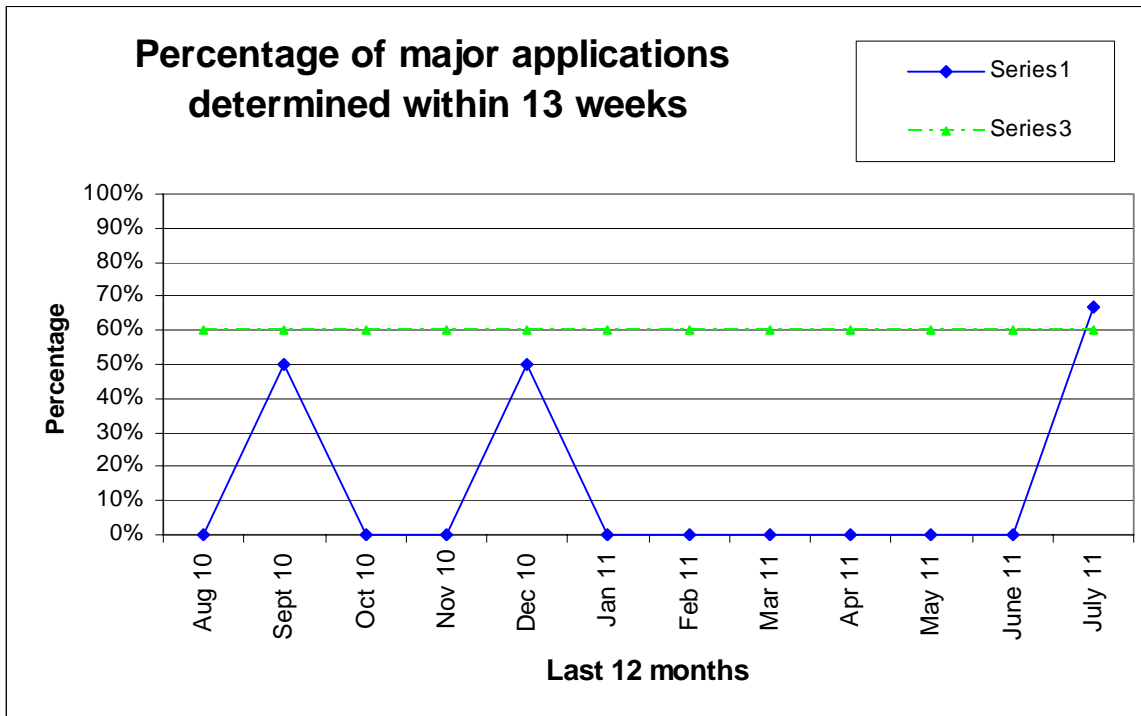
36% of major applications were determined within 13 weeks (4 out of 11)

78% of minor applications were determined within 8 weeks (298 out of 380 cases)

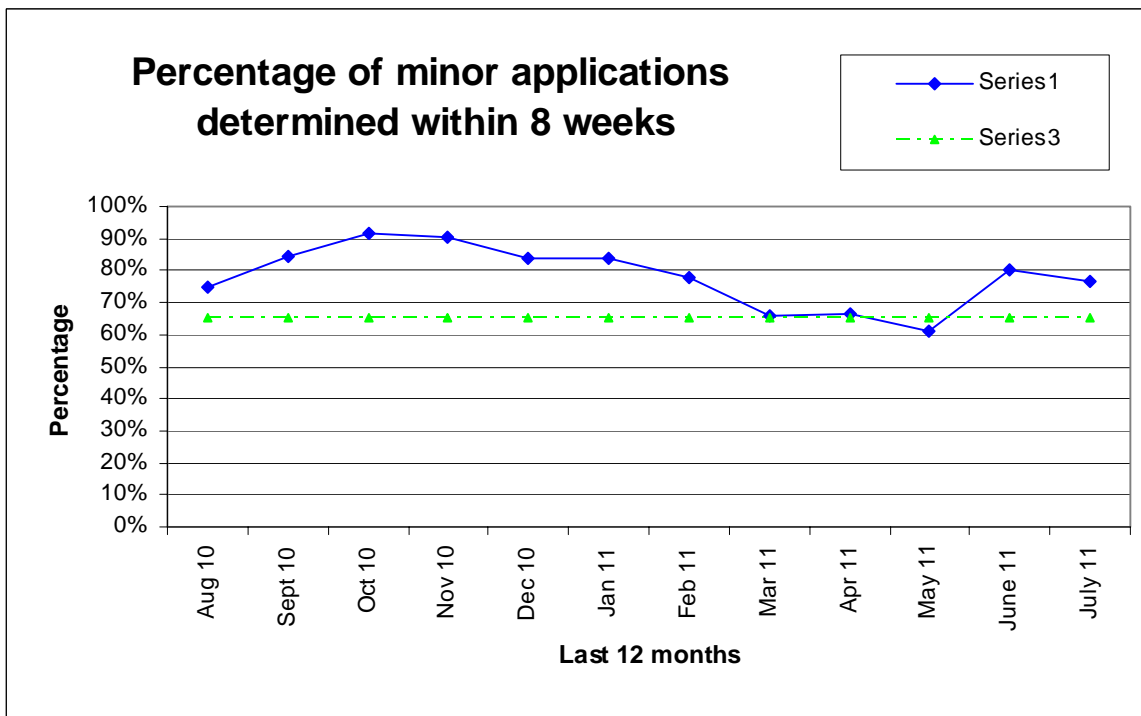
82% of other applications were determined within 8 weeks (1126 out of 1379 cases)

The 12 month performance for each category is shown in the following graphs:

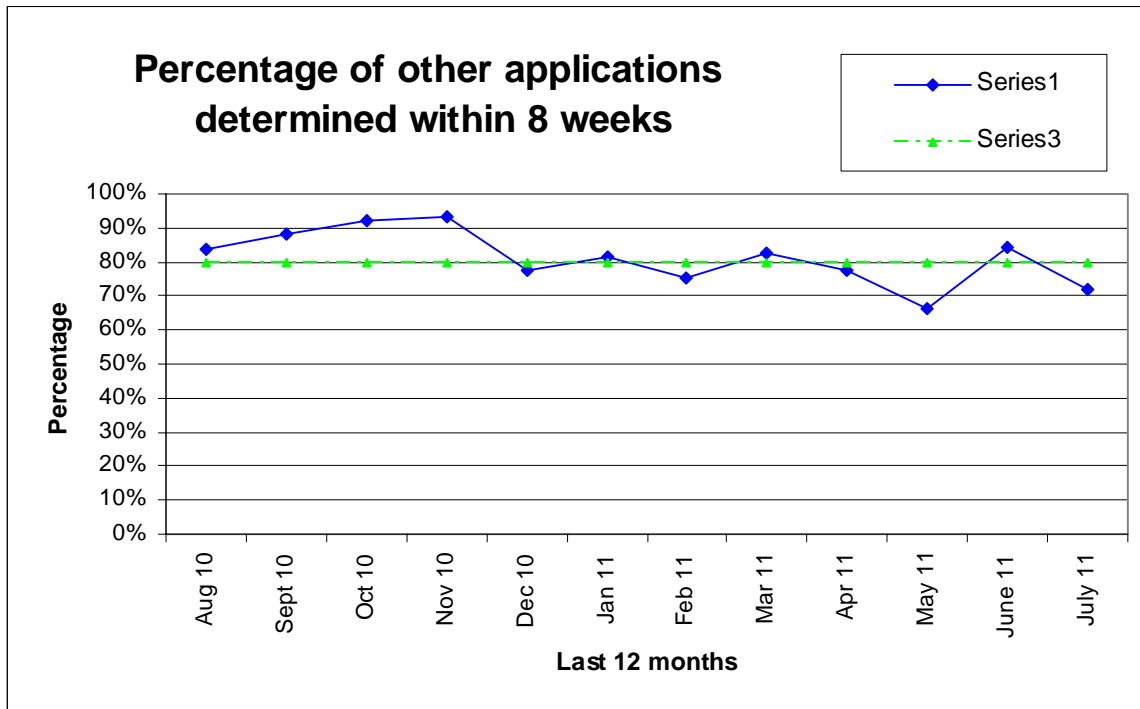
Major applications – last 12 months



Minor applications – last 12 months



Other applications – last 12 months



Background/Targets

NI 157 (formerly BV 109) is one of the Department for Communities and Local Government (DCLG) National Indicators for 2011/12.

It sets the following targets for determining planning applications:

- a. 60% of major applications within 13 weeks
- b. 65% of minor applications within 8 weeks
- c. 80% of other applications within 8 weeks

Haringey has set its own targets for 2011/12 in relation to NI 157. These are set out in Planning & Regeneration (P&R) Business Plan 2010-13 and are to determine:

- a. 60% of major applications within 13 weeks
- b. 65% of minor applications within 8 weeks
- c. 80% of other applications within 8 weeks

Appendix I

Explanation of categories

The NI 157 indicator covers planning applications included in the DCLG PS1/2 statutory return.

It *excludes* the following types of applications - TPO's, Telecommunications, Reserve Matters and Observations.

The definition for each of the category of applications is as follows:

Major applications -

For dwellings, where the number of dwellings to be constructed is 10 or more
For all other uses, where the floorspace to be built is 1,000 sq.m. or more, or where the site area is 1 hectare or more.

Minor application -

Where the development does not meet the requirement for a major application nor the definitions of Change of Use or Householder Development.

Other applications -

All other applications, *excluding* TPO's, Telecommunications, Reserve Matters and Observations.

DEVELOPMENT MANAGEMENT PERFORMANCE STATISTICS

GRANTED / REFUSAL RATES FOR DECISIONS

July 2011 Performance

In July 2011, excluding Certificate of Lawfulness applications, there were 120 applications determined of which:

66% were granted (79 out of 120)

34% were refused (41 out of 120)

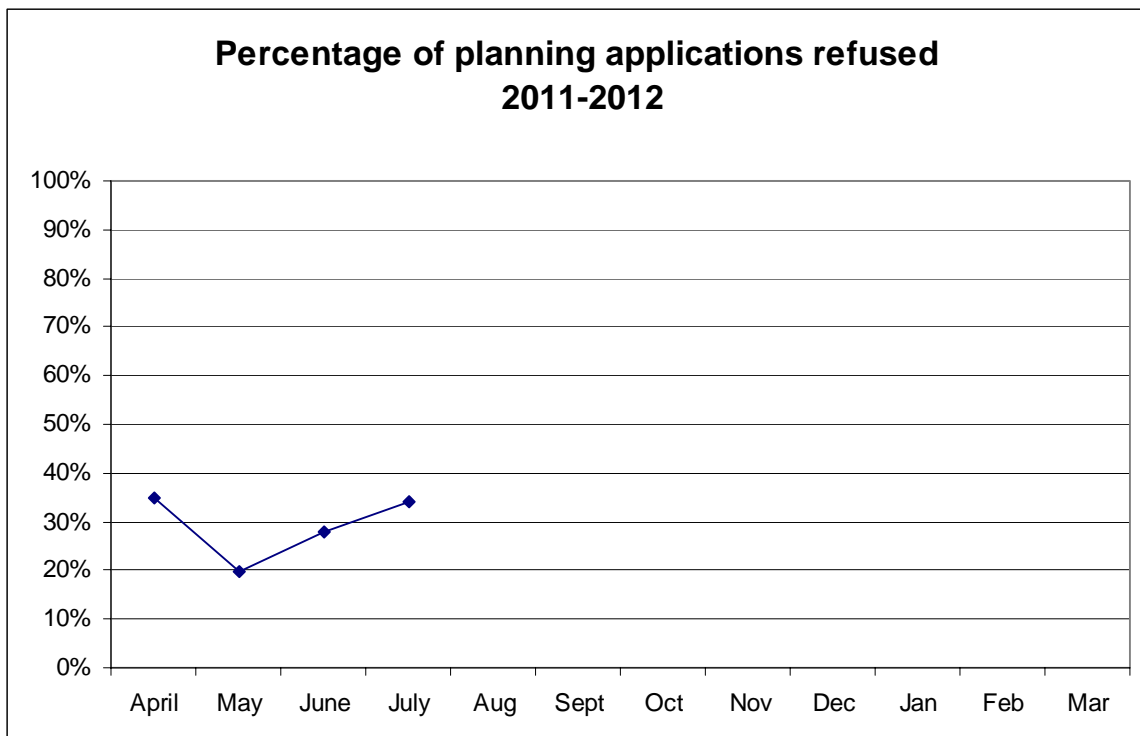
Year Performance – 2011/12

In the financial year 2010/11 up to the end of July, excluding Certificate of Lawfulness applications, there were 473 applications determined of which:

71% were granted (338 out of 473)

29% were refused (135 out of 473)

The monthly refusal rate is shown on the following graph:



DEVELOPMENT MANAGEMENT PERFORMANCE STATISTICS

LOCAL INDICATOR (FORMERLY BV204) - APPEALS AGAINST REFUSAL OF PLANNING PERMISSION

July 2011 Performance

In July 2011 there was 1 planning appeal determined against Haringey's decision to refuse planning permission, with performance being as follows -

0% of appeals allowed on refusals (0 out of 1 case)

100% of appeals dismissed on refusals (1 out of 1 case)

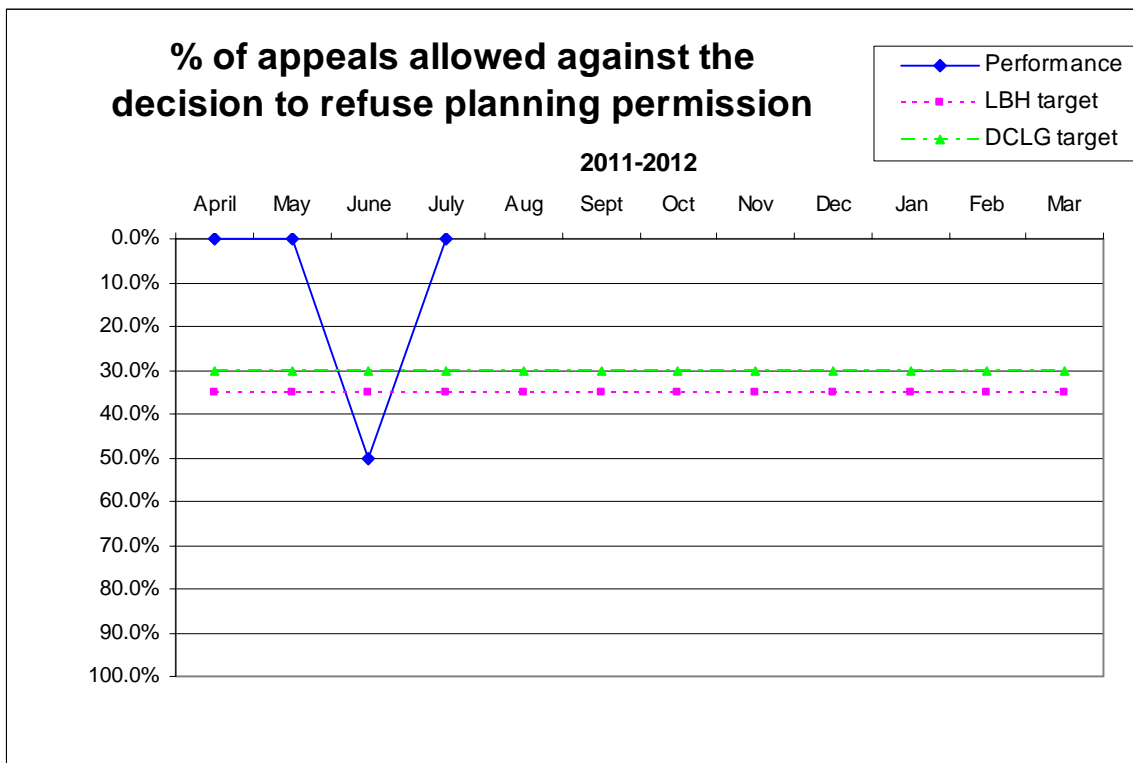
Year Performance – 2010/11

In the financial year 2011/12, up to the end of July, there were 13 planning appeals determined against Haringey's decision to refuse planning permission, with performance being as follows -

8% of appeals allowed on refusals (1 out of 13 cases)

92% of appeals dismissed on refusals (12 out of 13 cases)

The monthly performance is shown in the following graph:



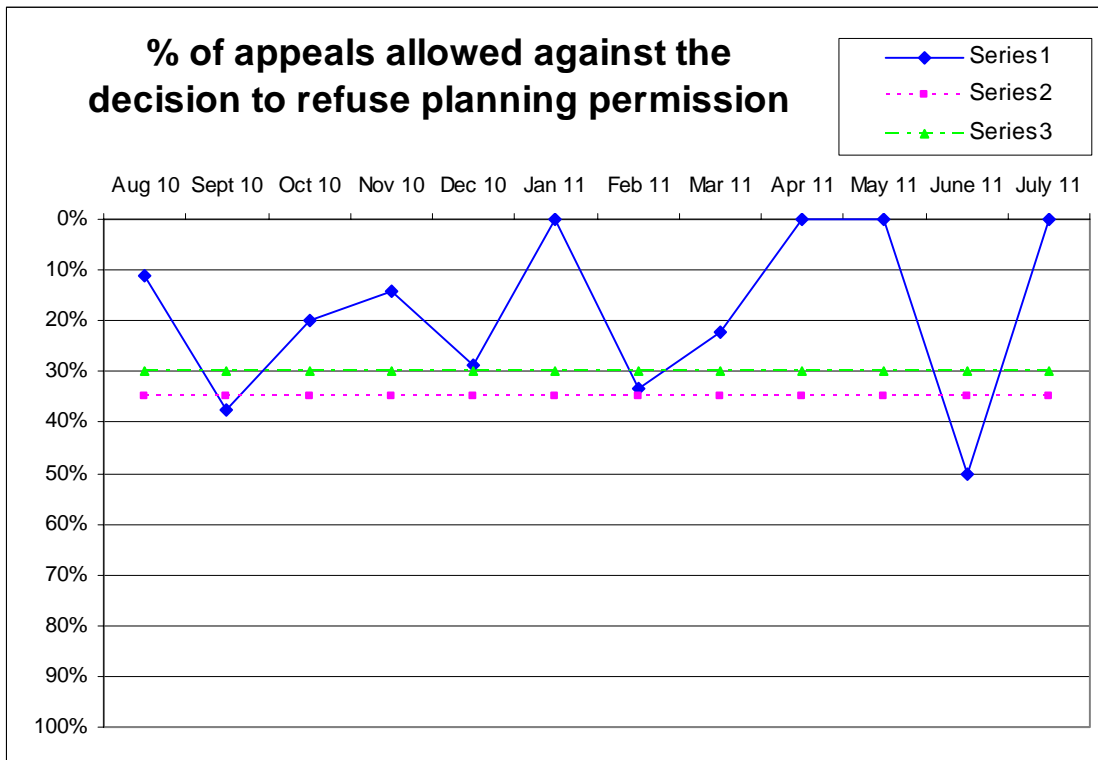
Last 12 months performance – August 2010 to July 2011

In the 12 month period August 2010 to July 2011 there were 82 planning appeals determined against Haringey's decision to refuse planning permission, with performance being as follows -

21% of appeals allowed on refusals (17 out of 82 cases)

79% of appeals dismissed on refusals (65 out of 82 cases)

The monthly performance for this period is shown in the following graph:



Background/Targets

This is no longer included in DCLG's National Indicator set. However it has been retained as a local indicator.

It sets a target for the percentage of appeals allowed against the authority's decision to refuse planning permission.

The target that was set by DCLG in 2007/08 was 30%^

Haringey has set its own target for 2011/12 in relation to this local indicator. This is set out in P&R Business Plan 2010-13.

The target set by Haringey for 2011/12 is 35%

(^ The lower the percentage of appeals allowed the better the performance)