

Planning Committee 16 May 2011

## DEVELOPMENT MANAGEMENT PERFORMANCE STATISTICS

### **NATIONAL INDICATOR NI 157 - DETERMINING PLANNING APPLICATIONS**

#### **March 2011 Performance**

In March 2011 there were 139 planning applications determined, with performance in each category as follows -

0% of major applications were determined within 13 weeks (0 out of 1 cases)

78% of minor applications were determined within 8 weeks (14 out of 18 cases)

75% of other applications were determined within 8 weeks (61 out of 81 cases)

For an explanation of the categories see Appendix I

#### **Year Performance – 2010/11**

In the financial year 2010/11, up to the end of March, there were 1811 planning applications determined, with performance in each category as follows -

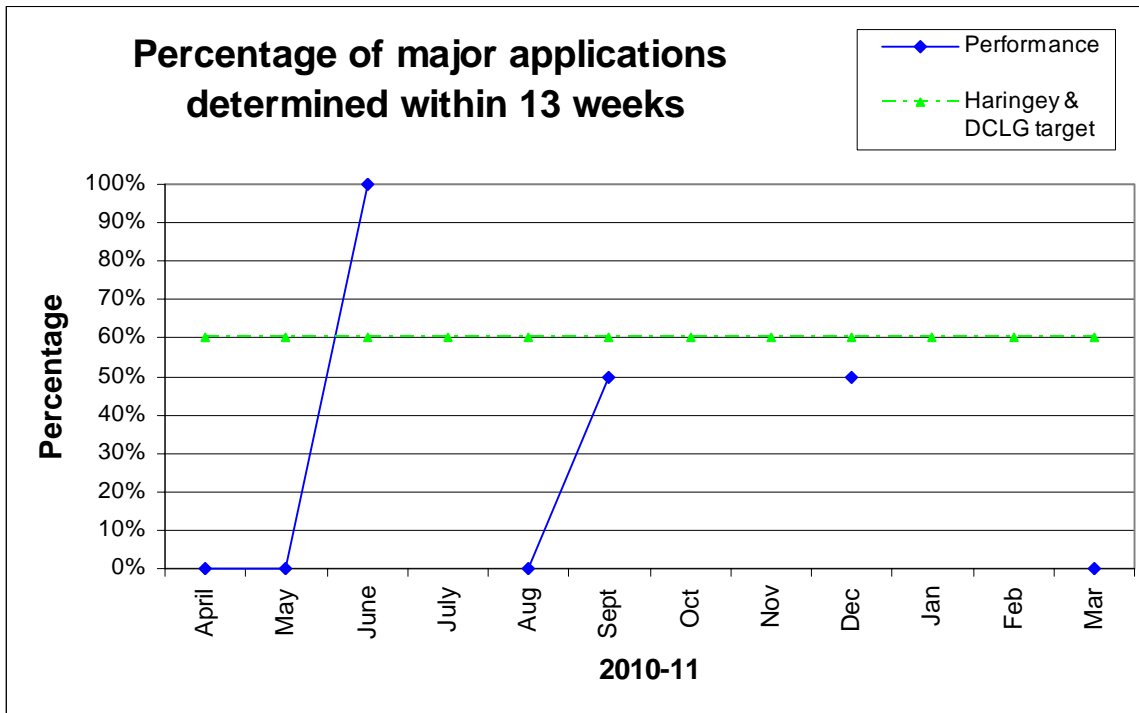
33% of major applications were determined within 13 weeks (3 out of 9)

79% of minor applications were determined within 8 weeks (299 out of 378 cases)

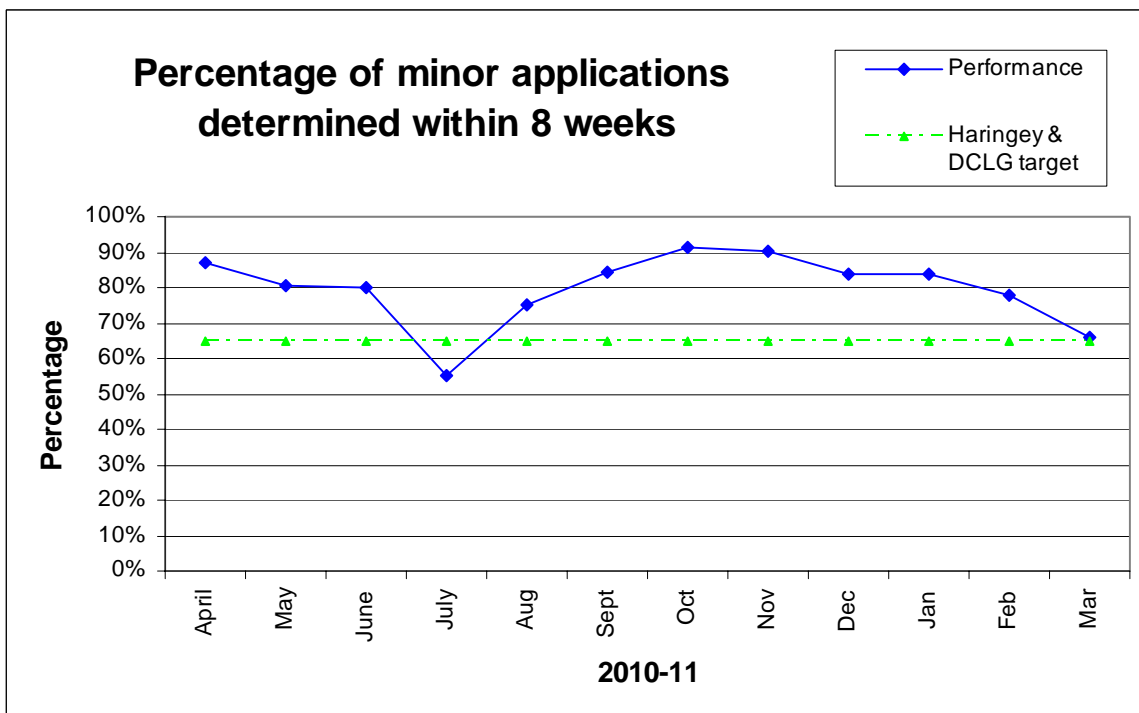
84% of other applications were determined within 8 weeks (1199 out of 1424 cases)

The monthly performance for each of the categories is shown in the following graphs:

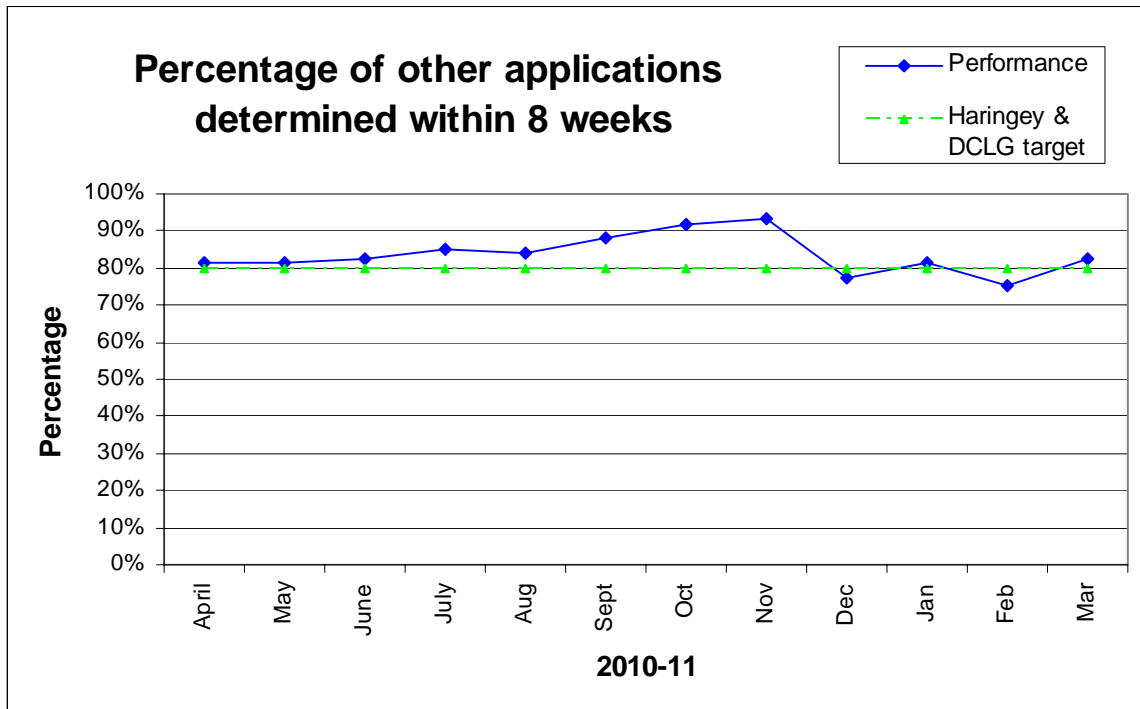
## Major Applications 2010/11



## Minor Applications 2010/11



## Other applications 2010/11



### Last 12 months performance – April 2010 to March 2011

In the 12 month period April 2010 to March 2011 there were 1811 planning applications determined, with performance in each category as follows -

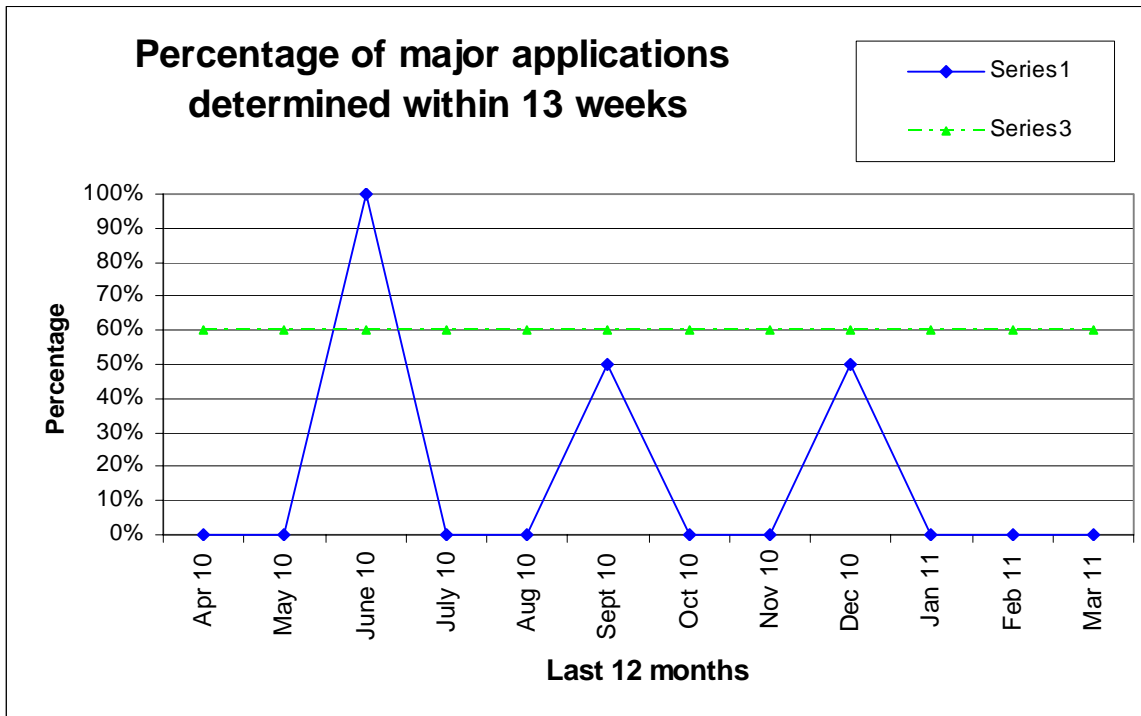
33% of major applications were determined within 13 weeks (3 out of 9)

79% of minor applications were determined within 8 weeks (299 out of 378 cases)

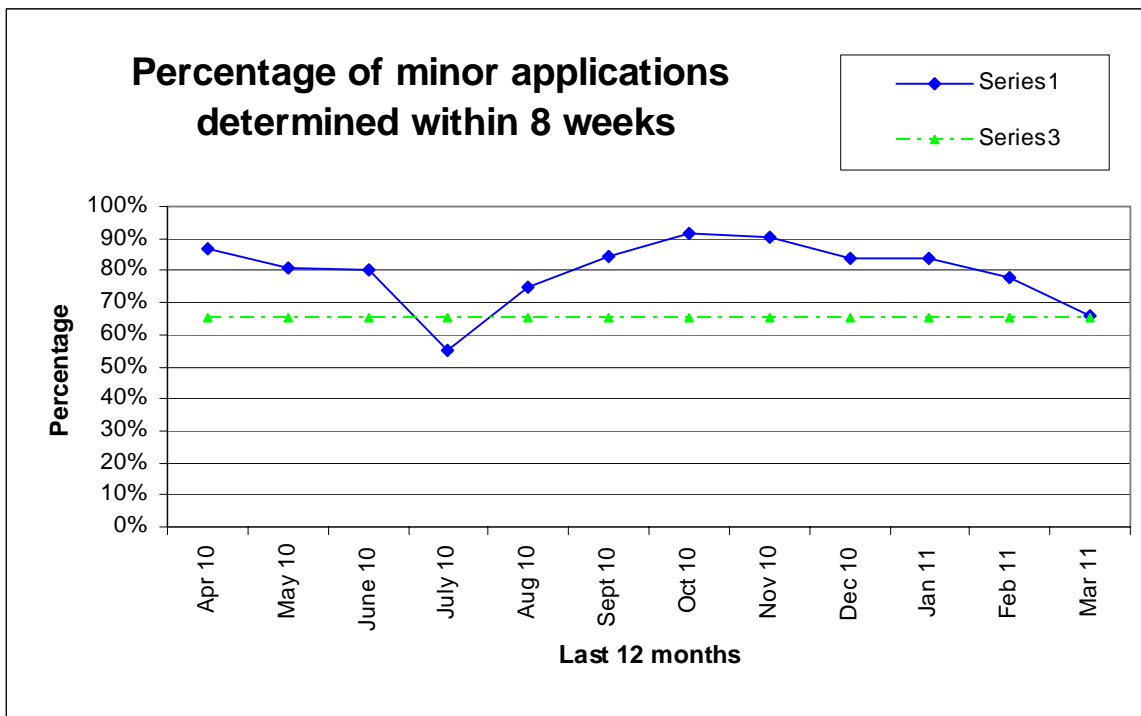
84% of other applications were determined within 8 weeks (1199 out of 1424 cases)

The 12 month performance for each category is shown in the following graphs:

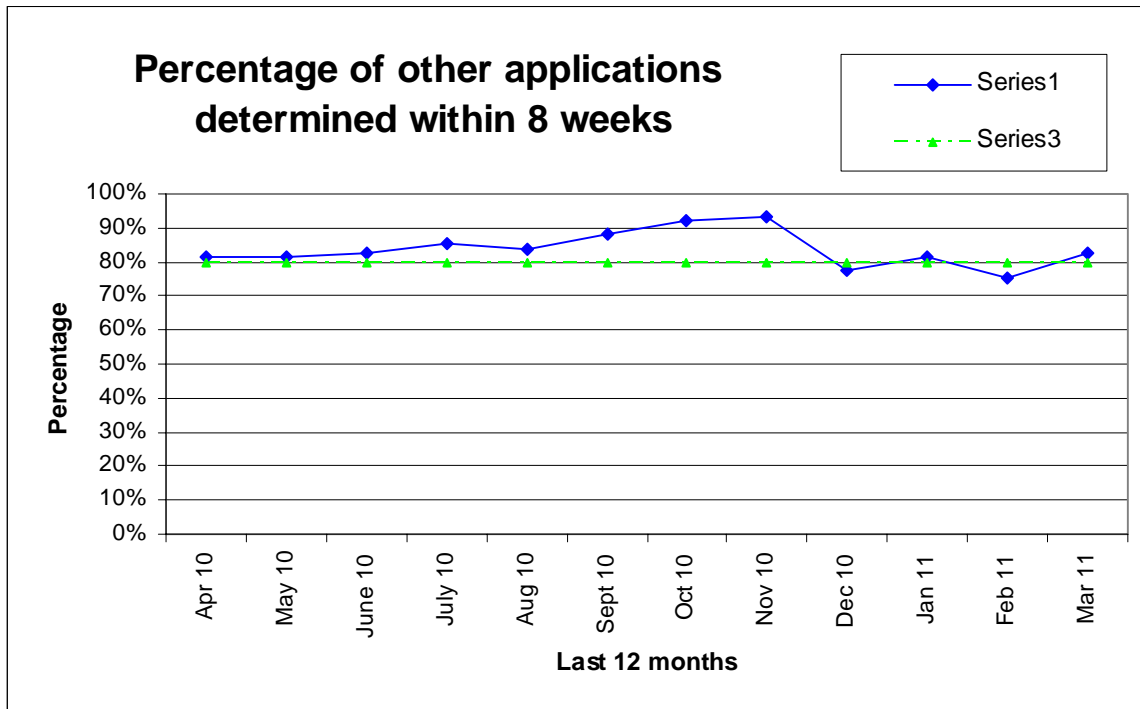
**Major applications – last 12 months**



**Minor applications – last 12 months**



## Other applications – last 12 months



## Background/Targets

NI 157 (formerly BV 109) is one of the Department for Communities and Local Government (DCLG) National Indicators for 2010/11.

It sets the following targets for determining planning applications:

- a. 60% of major applications within 13 weeks
- b. 65% of minor applications within 8 weeks
- c. 80% of other applications within 8 weeks

Haringey has set its own targets for 2010/11 in relation to NI 157. These are set out in Planning & Regeneration (P&R) Business Plan 2010-13 and are to determine:

- a. 60% of major applications within 13 weeks
- b. 65% of minor applications within 8 weeks
- c. 80% of other applications within 8 weeks

## **Appendix I**

### **Explanation of categories**

The NI 157 indicator covers planning applications included in the DCLG PS1/2 statutory return.

It *excludes* the following types of applications - TPO's, Telecommunications, Reserve Matters and Observations.

The definition for each of the category of applications is as follows:

Major applications -

For dwellings, where the number of dwellings to be constructed is 10 or more  
For all other uses, where the floorspace to be built is 1,000 sq.m. or more, or where the site area is 1 hectare or more.

Minor application -

Where the development does not meet the requirement for a major application nor the definitions of Change of Use or Householder Development.

Other applications -

All other applications, *excluding* TPO's, Telecommunications, Reserve Matters and Observations.

## DEVELOPMENT MANAGEMENT PERFORMANCE STATISTICS

### GRANTED / REFUSAL RATES FOR DECISIONS

#### March 2011 Performance

In March 2011, excluding Certificate of Lawfulness applications, there were 119 applications determined of which:

81% were granted (96 out of 119)

19% were refused (23 out of 119)

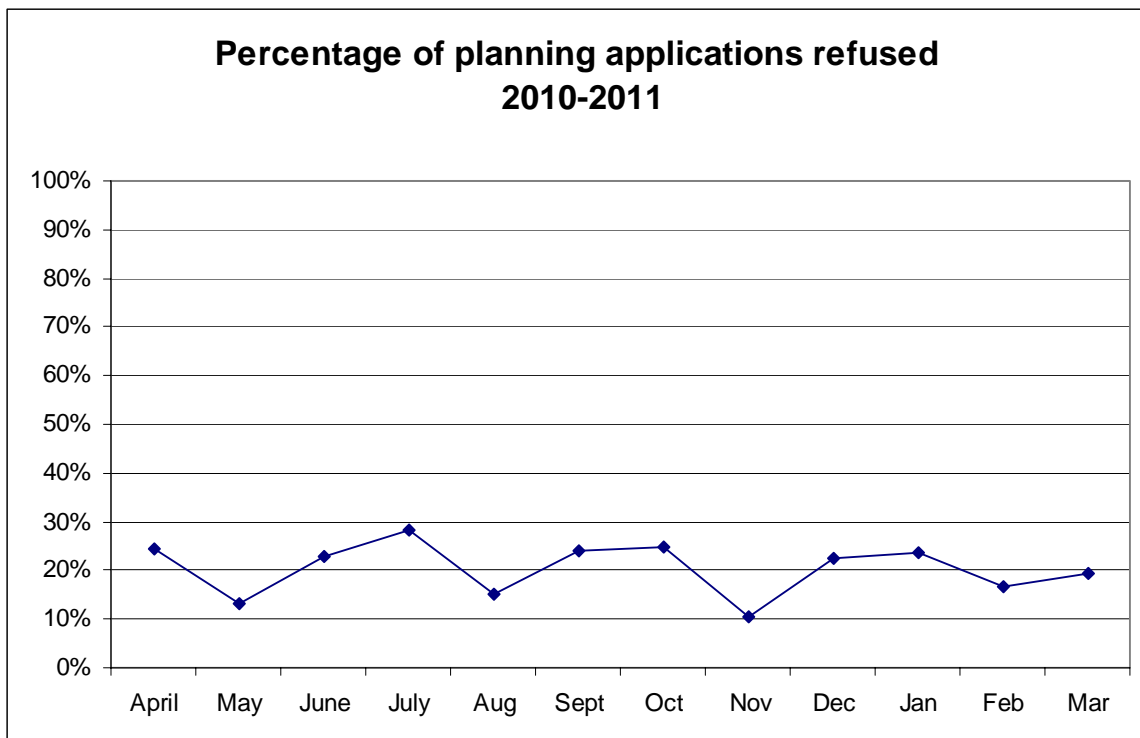
#### Year Performance – 2010/11

In the financial year 2010/11 up to the end of March, excluding Certificate of Lawfulness applications, there were 1527 applications determined of which:

80% were granted (1218 out of 1527)

20% were refused (309 out of 1527)

The monthly refusal rate is shown on the following graph:



## DEVELOPMENT MANAGEMENT PERFORMANCE STATISTICS

### LOCAL INDICATOR (FORMERLY BV204) - APPEALS AGAINST REFUSAL OF PLANNING PERMISSION

#### March 2011 Performance

In March 2011 there were 9 planning appeals determined against Haringey's decision to refuse planning permission, with performance being as follows -

22% of appeals allowed on refusals (2 out of 9 cases)

78% of appeals dismissed on refusals (7 out of 9 cases)

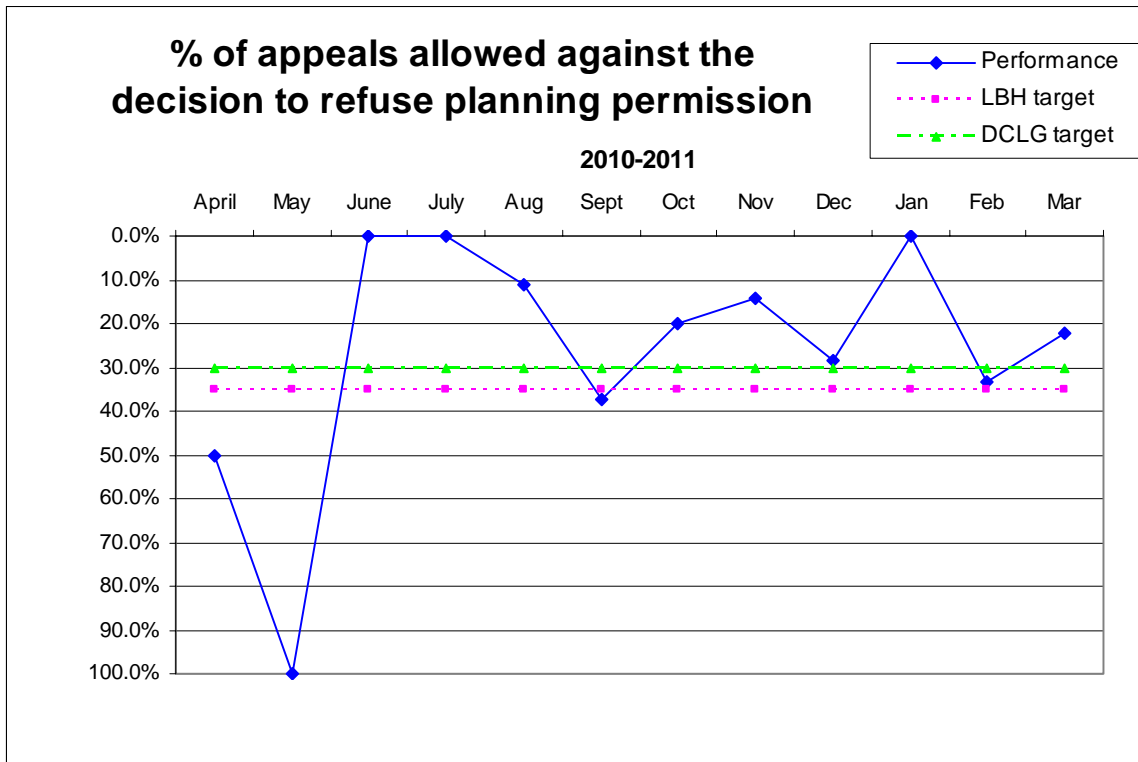
#### Year Performance – 2010/11

In the financial year 2010/11, up to the end of March, there were 81 planning appeals determined against Haringey's decision to refuse planning permission, with performance being as follows -

25% of appeals allowed on refusals (20 out of 81 cases)

75% of appeals dismissed on refusals (61 out of 81 cases)

The monthly performance is shown in the following graph:





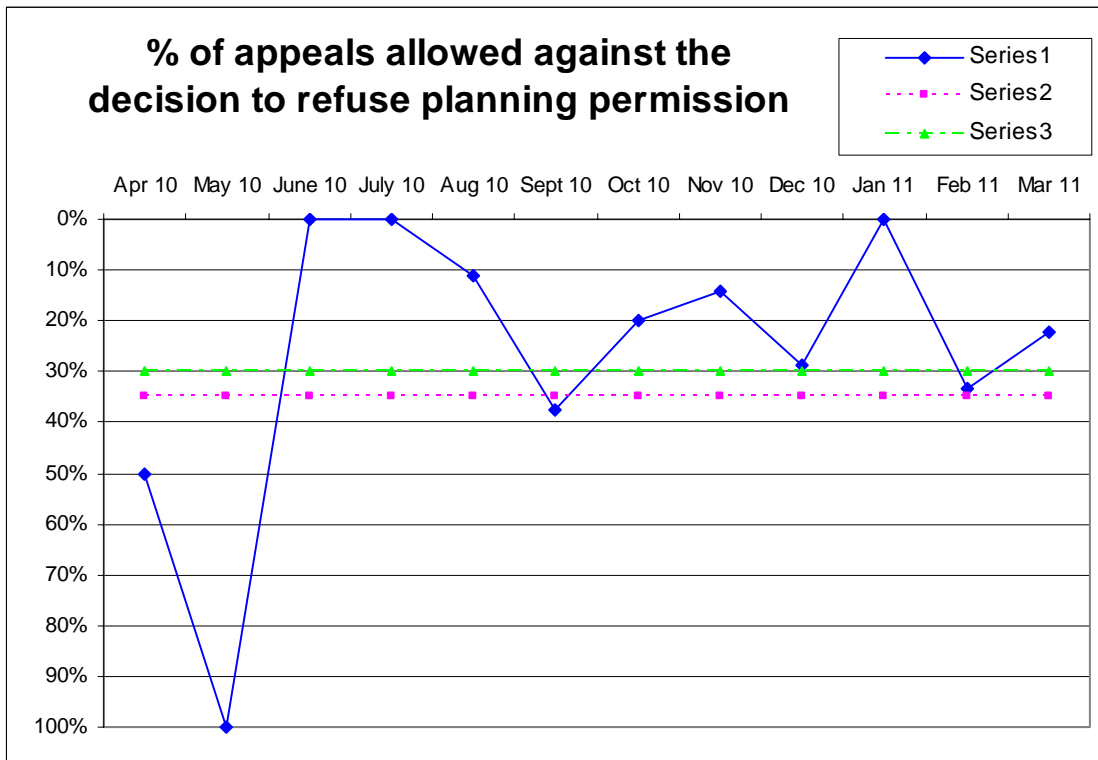
**Last 12 months performance – April 2010 to March 2011**

In the 12 month period April 2010 to March 2011 there were 81 planning appeals determined against Haringey's decision to refuse planning permission, with performance being as follows -

24.7% of appeals allowed on refusals (20 out of 81 cases)

75.3% of appeals dismissed on refusals (61 out of 81 cases)

The monthly performance for this period is shown in the following graph:



## **Background/Targets**

This is no longer included in DCLG's National Indicator set. However it has been retained as a local indicator.

It sets a target for the percentage of appeals allowed against the authority's decision to refuse planning permission.

The target that was set by DCLG in 2007/08 was 30%^

Haringey has set its own target for 2010/11 in relation to this local indicator. This is set out in P&R Business Plan 2010-13.

The target set by Haringey for 2010/11 is 35%

*(^ The lower the percentage of appeals allowed the better the performance)*