

DEVELOPMENT MANAGEMENT PERFORMANCE STATISTICS

NATIONAL INDICATOR NI 157 - DETERMINING PLANNING APPLICATIONS

February 2011 Performance

In February 2011 there were 99 planning applications determined, with performance in each category as follows -

There were no major applications determined in February.

78% of minor applications were determined within 8 weeks (14 out of 18 cases)

75% of other applications were determined within 8 weeks (61 out of 81 cases)

For an explanation of the categories see Appendix I

Year Performance – 2010/11

In the financial year 2010/11, up to the end of February, there were 1672 planning applications determined, with performance in each category as follows -

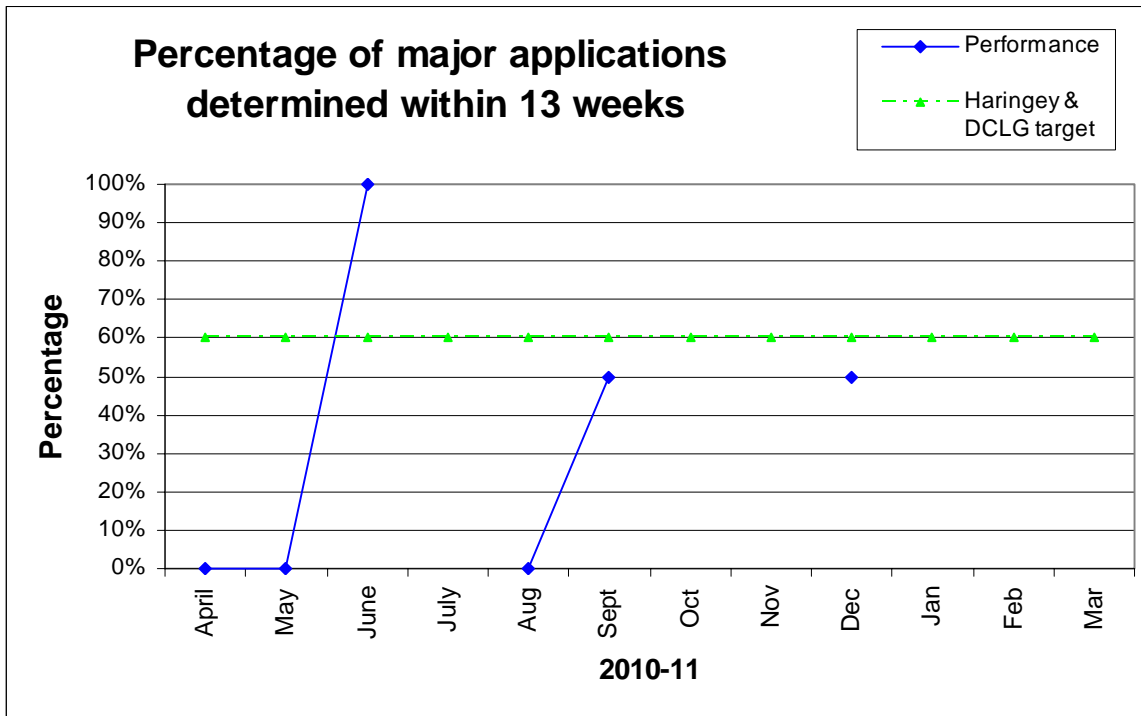
38% of major applications were determined within 13 weeks (3 out of 8)

80% of minor applications were determined within 8 weeks (276 out of 343 cases)

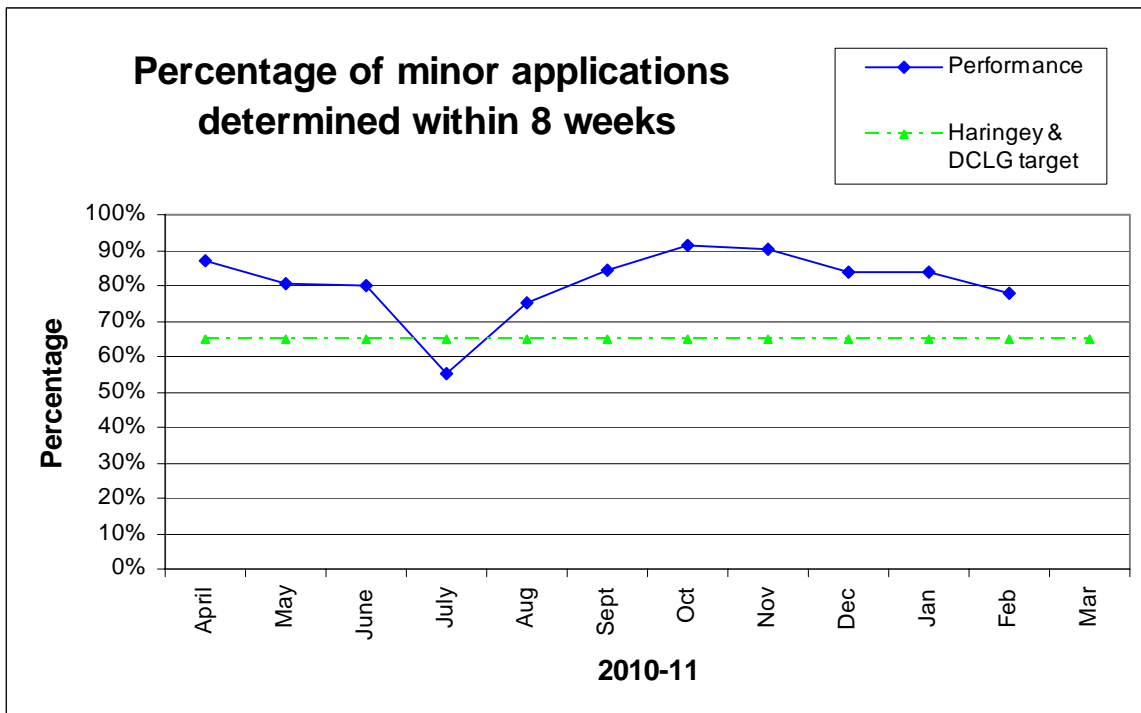
84% of other applications were determined within 8 weeks (1114 out of 1321 cases)

The monthly performance for each of the categories is shown in the following graphs:

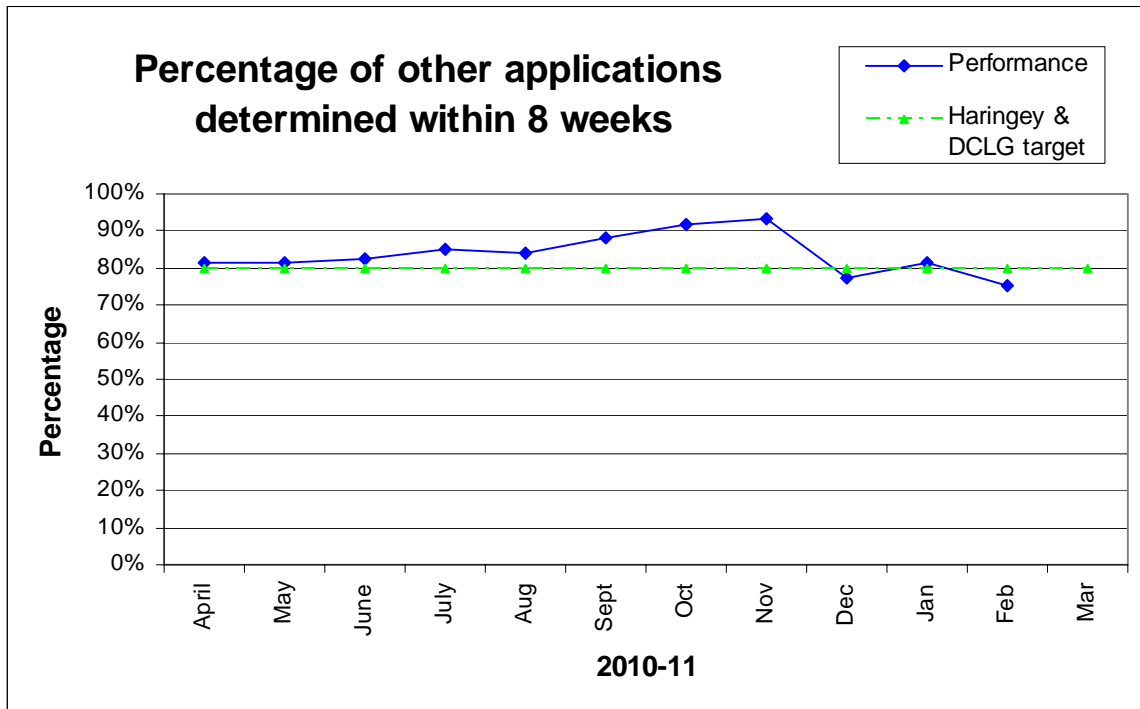
Major Applications 2010/11



Minor Applications 2010/11



Other applications 2010/11



Last 12 months performance – March 2010 to February 2011

In the 12 month period March 2010 to February 2011 there were 1836 planning applications determined, with performance in each category as follows -

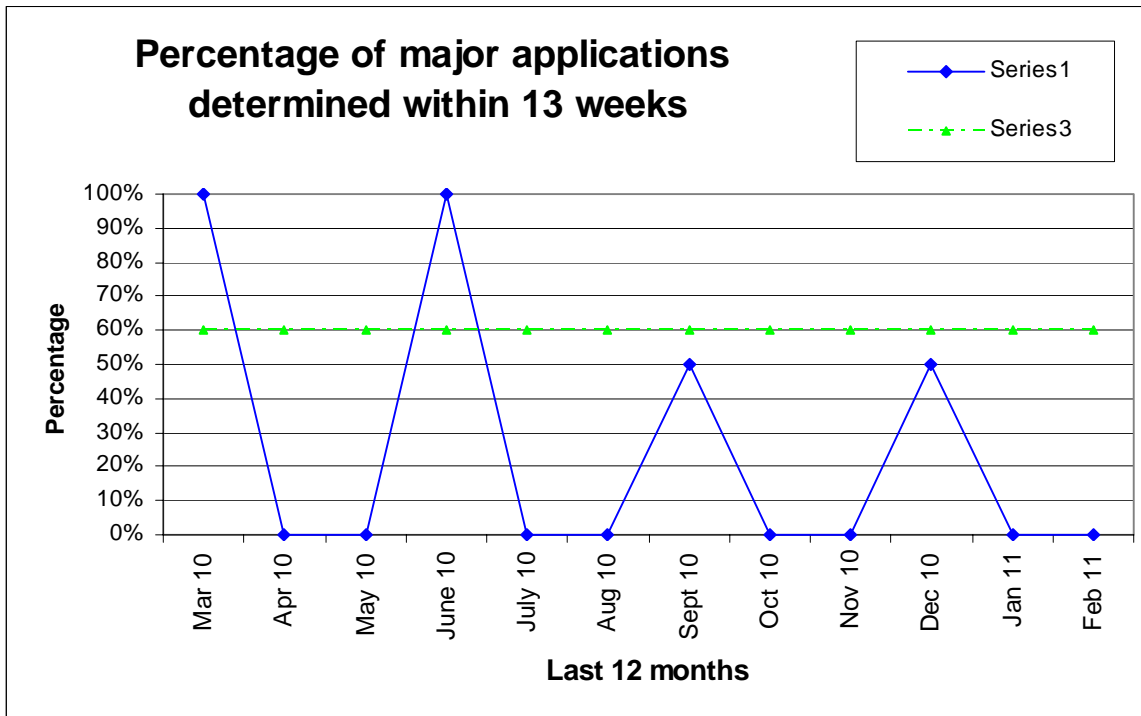
50% of major applications were determined within 13 weeks (5 out of 10)

81% of minor applications were determined within 8 weeks (310 out of 384 cases)

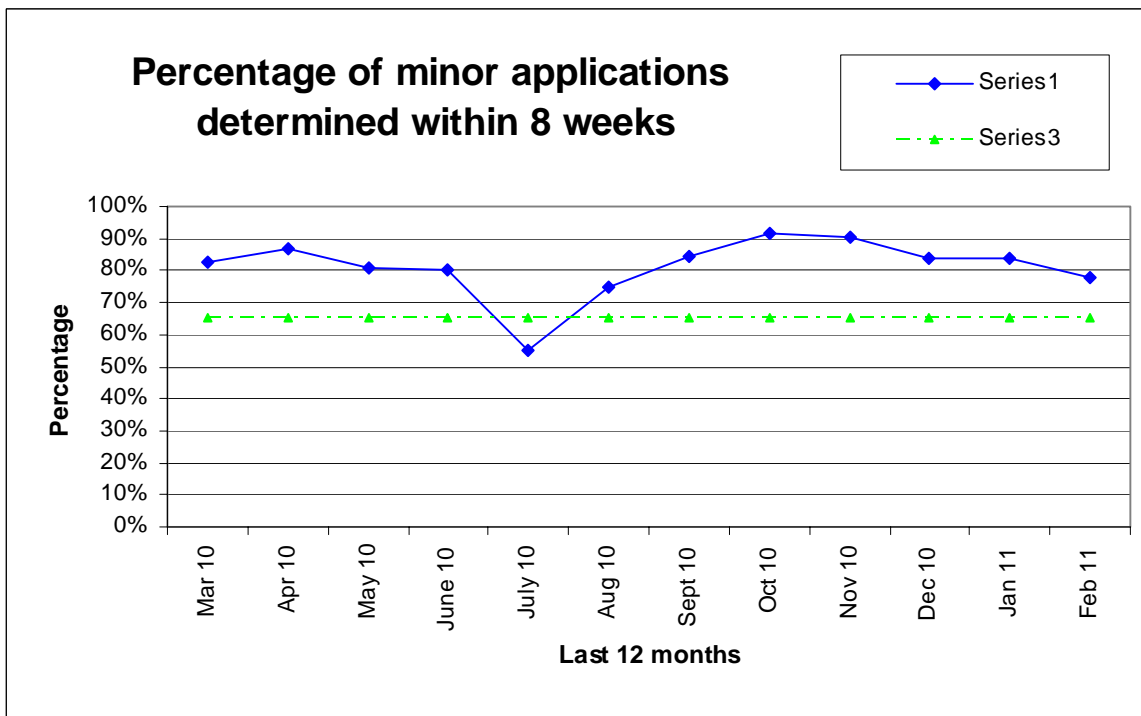
85% of other applications were determined within 8 weeks (1221 out of 1442 cases)

The 12 month performance for each category is shown in the following graphs:

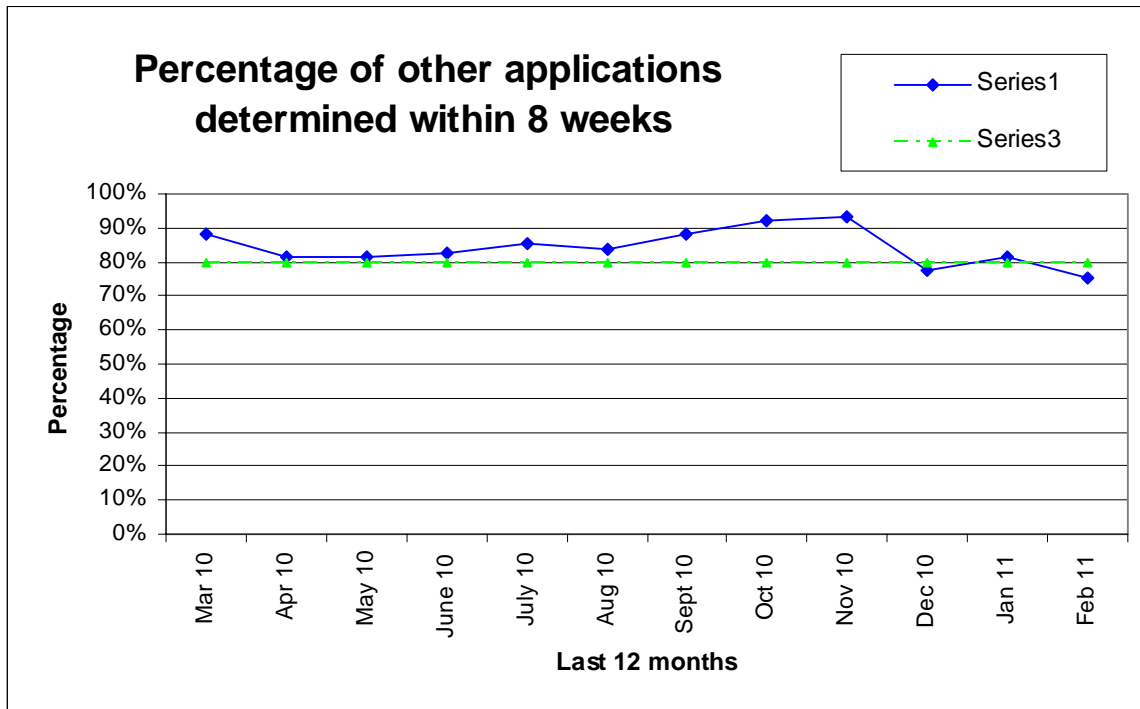
Major applications – last 12 months



Minor applications – last 12 months



Other applications – last 12 months



Background/Targets

NI 157 (formerly BV 109) is one of the Department for Communities and Local Government (DCLG) National Indicators for 2010/11.

It sets the following targets for determining planning applications:

- a. 60% of major applications within 13 weeks
- b. 65% of minor applications within 8 weeks
- c. 80% of other applications within 8 weeks

Haringey has set its own targets for 2010/11 in relation to NI 157. These are set out in Planning & Regeneration (P&R) Business Plan 2010-13 and are to determine:

- a. 60% of major applications within 13 weeks
- b. 65% of minor applications within 8 weeks
- c. 80% of other applications within 8 weeks

Appendix I

Explanation of categories

The NI 157 indicator covers planning applications included in the DCLG PS1/2 statutory return.

It *excludes* the following types of applications - TPO's, Telecommunications, Reserve Matters and Observations.

The definition for each of the category of applications is as follows:

Major applications -

For dwellings, where the number of dwellings to be constructed is 10 or more
For all other uses, where the floorspace to be built is 1,000 sq.m. or more, or where the site area is 1 hectare or more.

Minor application -

Where the development does not meet the requirement for a major application nor the definitions of Change of Use or Householder Development.

Other applications -

All other applications, *excluding* TPO's, Telecommunications, Reserve Matters and Observations.

DEVELOPMENT MANAGEMENT PERFORMANCE STATISTICS

GRANTED / REFUSAL RATES FOR DECISIONS

February 2011 Performance

In February 2011, excluding Certificate of Lawfulness applications, there were 84 applications determined of which:

83% were granted (70 out of 84)

17% were refused (14 out of 84)

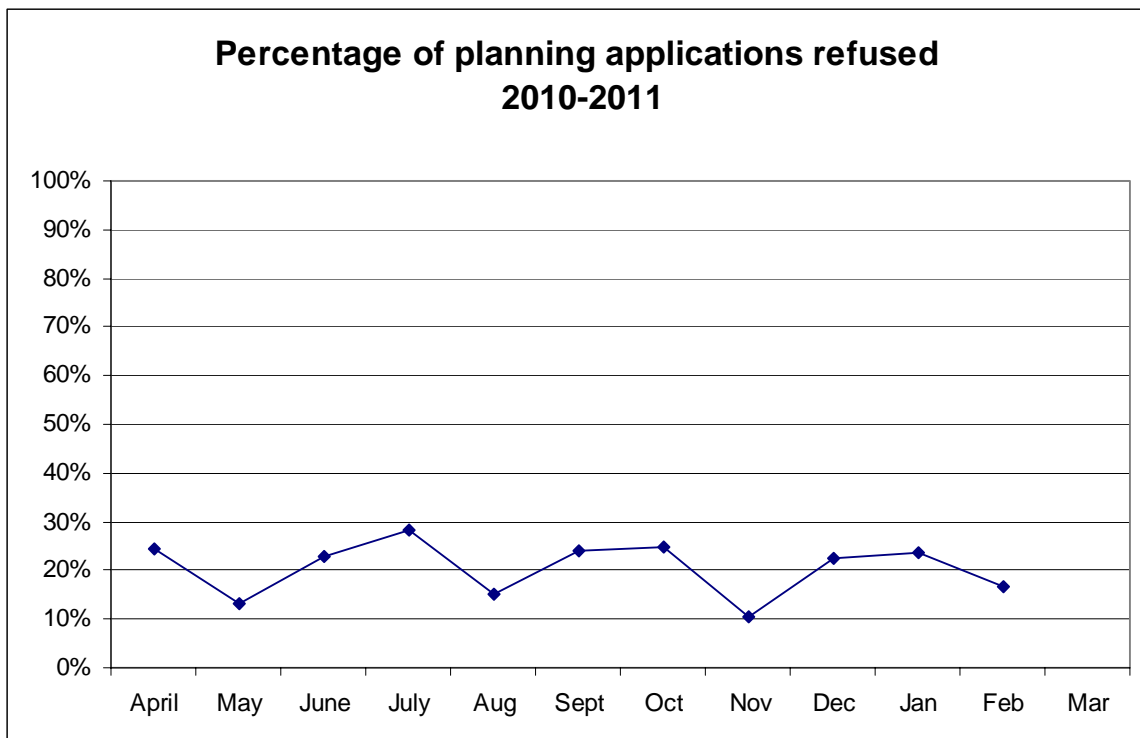
Year Performance – 2010/11

In the financial year 2010/11 up to the end of February, excluding Certificate of Lawfulness applications, there were 1408 applications determined of which:

80% were granted (1122 out of 1408)

20% were refused (286 out of 1408)

The monthly refusal rate is shown on the following graph:



DEVELOPMENT MANAGEMENT PERFORMANCE STATISTICS

LOCAL INDICATOR (FORMERLY BV204) - APPEALS AGAINST REFUSAL OF PLANNING PERMISSION

February 2011 Performance

In February 2011 there were 6 planning appeals determined against Haringey's decision to refuse planning permission, with performance being as follows -

33% of appeals allowed on refusals (2 out of 6 cases)

67% of appeals dismissed on refusals (4 out of 5 cases)

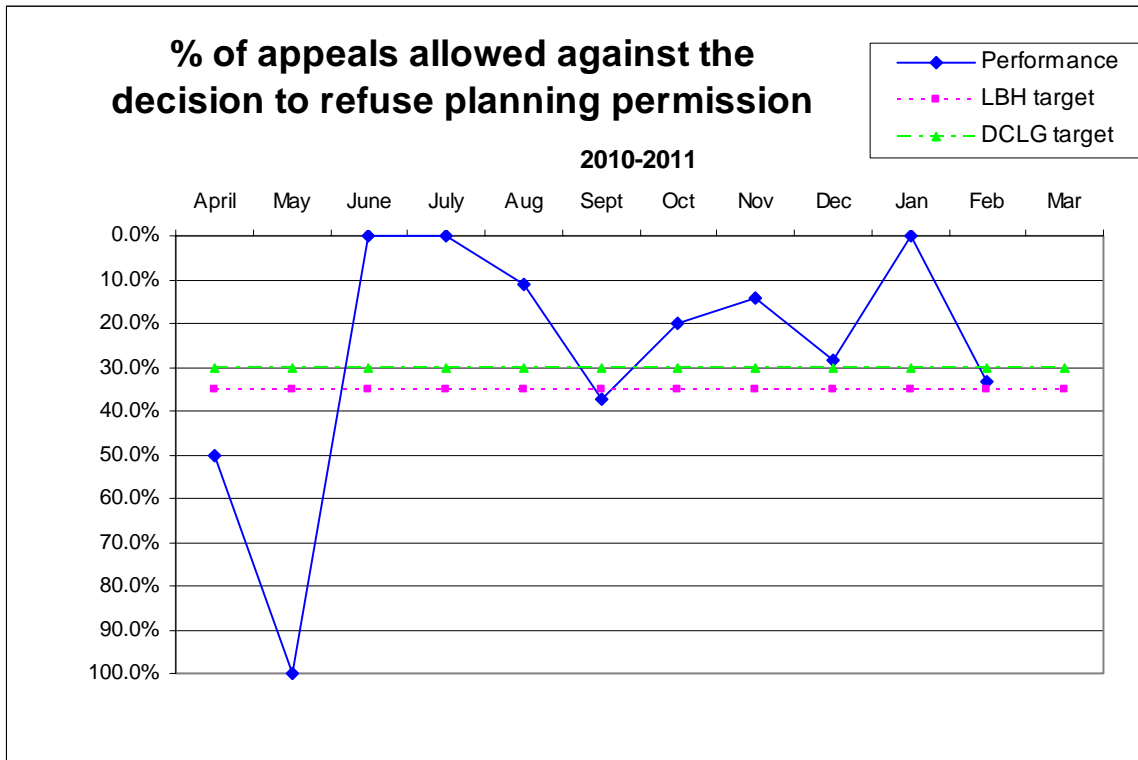
Year Performance – 2010/11

In the financial year 2010/11, up to the end of February, there were 72 planning appeals determined against Haringey's decision to refuse planning permission, with performance being as follows -

25% of appeals allowed on refusals (18 out of 72 cases)

75% of appeals dismissed on refusals (54 out of 72 cases)

The monthly performance is shown in the following graph:



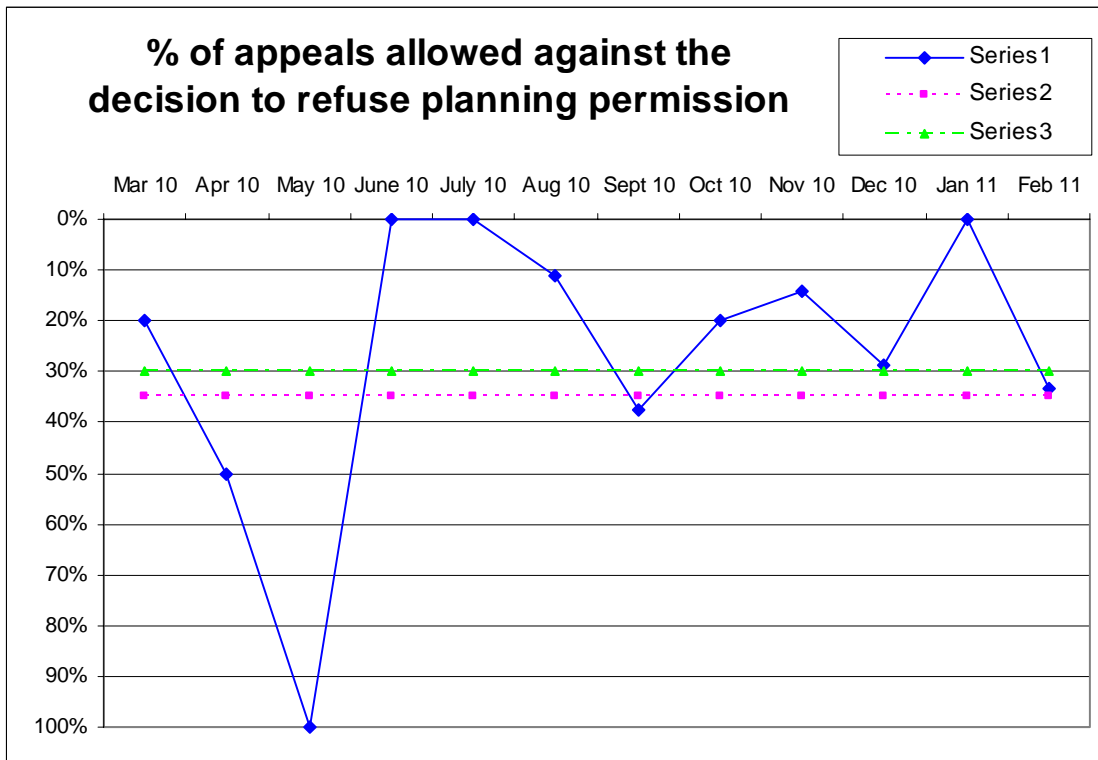
Last 12 months performance – March 2010 to February 2011

In the 12 month period March 2010 to February 2011 there were 81 planning appeals determined against Haringey's decision to refuse planning permission, with performance being as follows -

24.4% of appeals allowed on refusals (20 out of 82 cases)

75.6% of appeals dismissed on refusals (62 out of 82 cases)

The monthly performance for this period is shown in the following graph:



Background/Targets

This is no longer included in DCLG's National Indicator set. However it has been retained as a local indicator.

It sets a target for the percentage of appeals allowed against the authority's decision to refuse planning permission.

The target that was set by DCLG in 2007/08 was 30%^

Haringey has set its own target for 2010/11 in relation to this local indicator. This is set out in P&R Business Plan 2010-13.

The target set by Haringey for 2010/11 is 35%

(^ The lower the percentage of appeals allowed the better the performance)