

DEVELOPMENT MANAGEMENT PERFORMANCE STATISTICS

NATIONAL INDICATOR NI 157 - DETERMINING PLANNING APPLICATIONS

May 2010 Performance

In May 2010 there were 162 planning applications determined, with performance in each category as follows -

0% of major applications were determined within 13 weeks (0 out of 1)

81% of minor applications were determined within 8 weeks (25 out of 31 cases)

82% of other applications were determined within 8 weeks (106 out of 130 cases)

For an explanation of the categories see Appendix I

Year Performance – 2010/11

In the financial year 2010/11, up to the end of May, there were 295 planning applications determined, with performance in each category as follows -

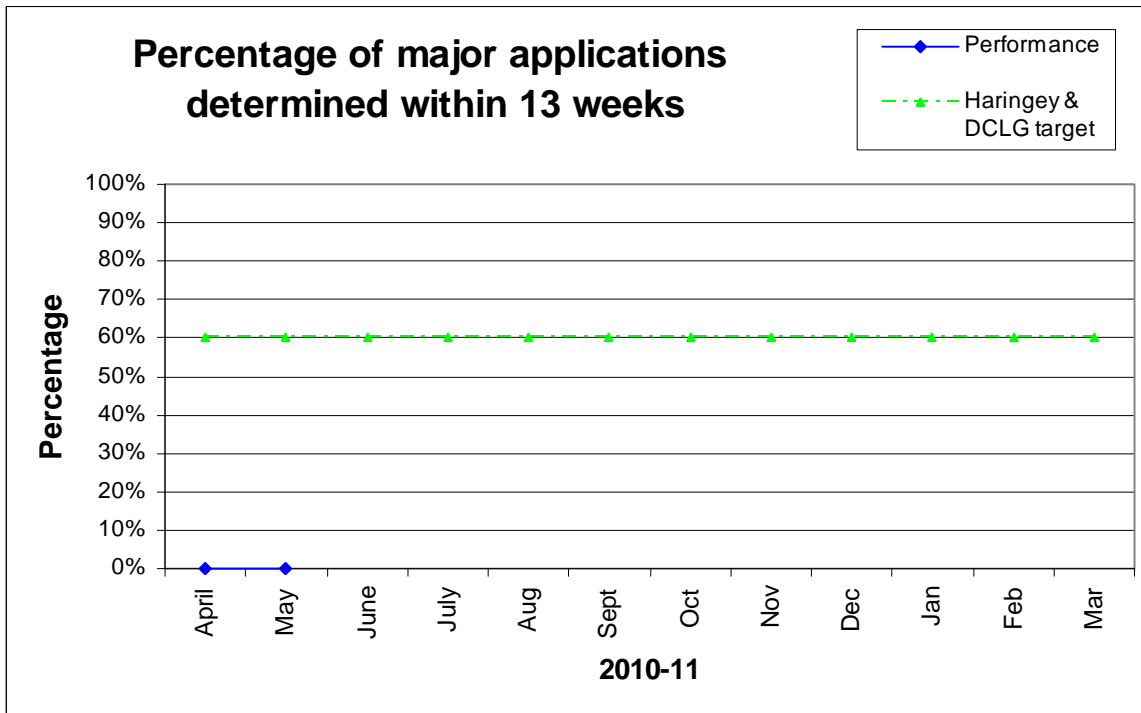
0% of major applications were determined within 13 weeks (0 out of 2)

83% of minor applications were determined within 8 weeks (45 out of 54 cases)

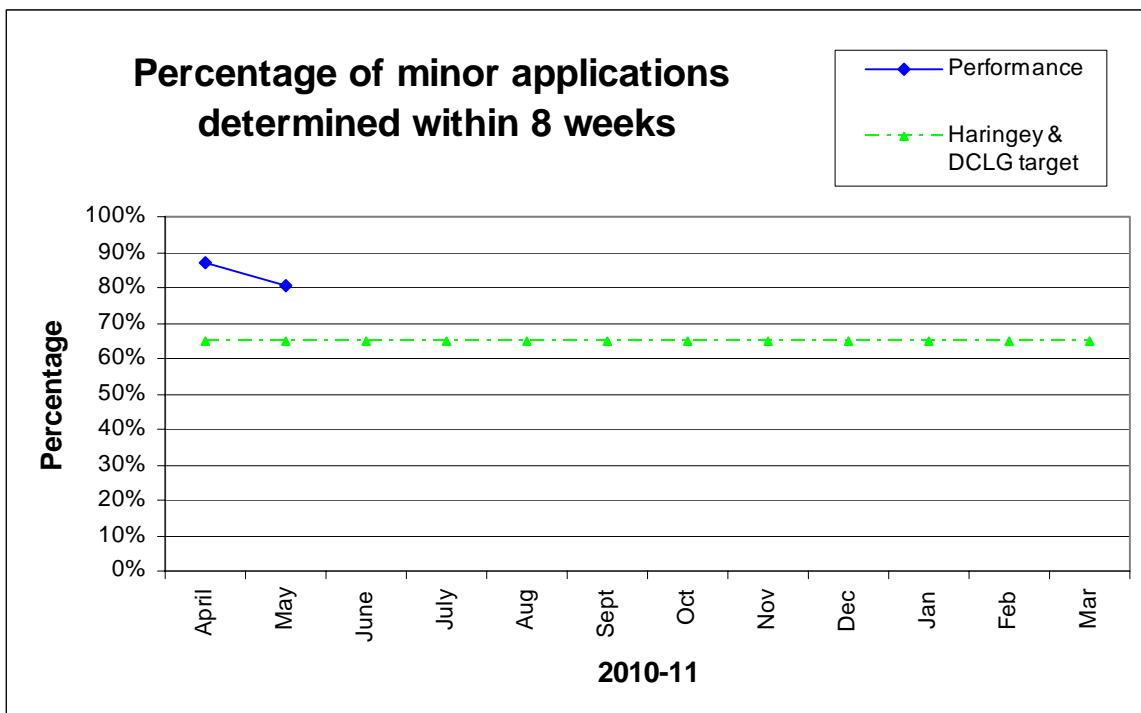
82% of other applications were determined within 8 weeks (195 out of 239 cases)

The monthly performance for each of the categories is shown in the following graphs:

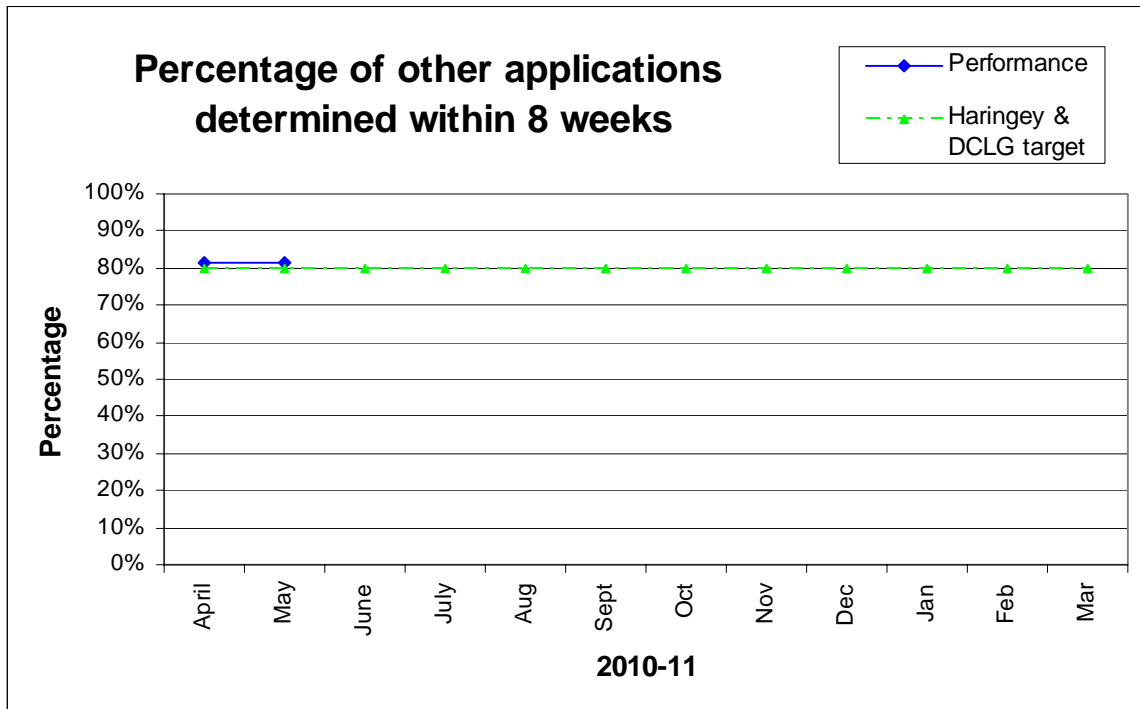
Major Applications 2010/11



Minor Applications 2010/11



Other applications 2010/11



Last 12 months performance – June 2009 to May 2010

In the 12 month period June 2009 to May 2010 there were 1699 planning applications determined, with performance in each category as follows -

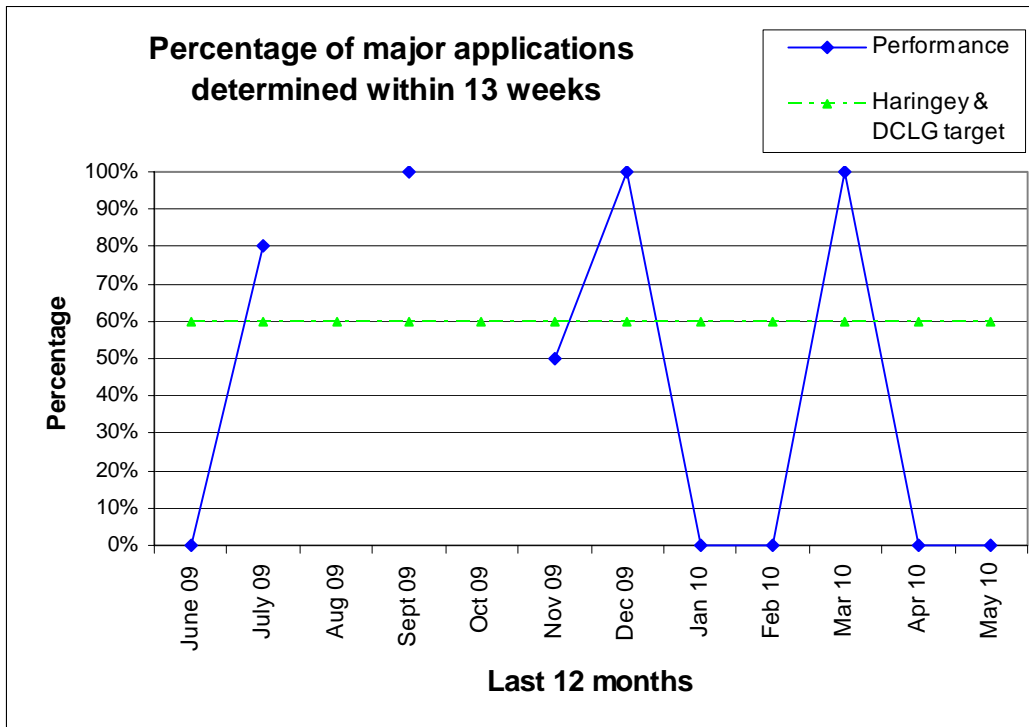
60% of major applications were determined within 13 weeks (12 out of 20)

77% of minor applications were determined within 8 weeks (282 out of 367 cases)

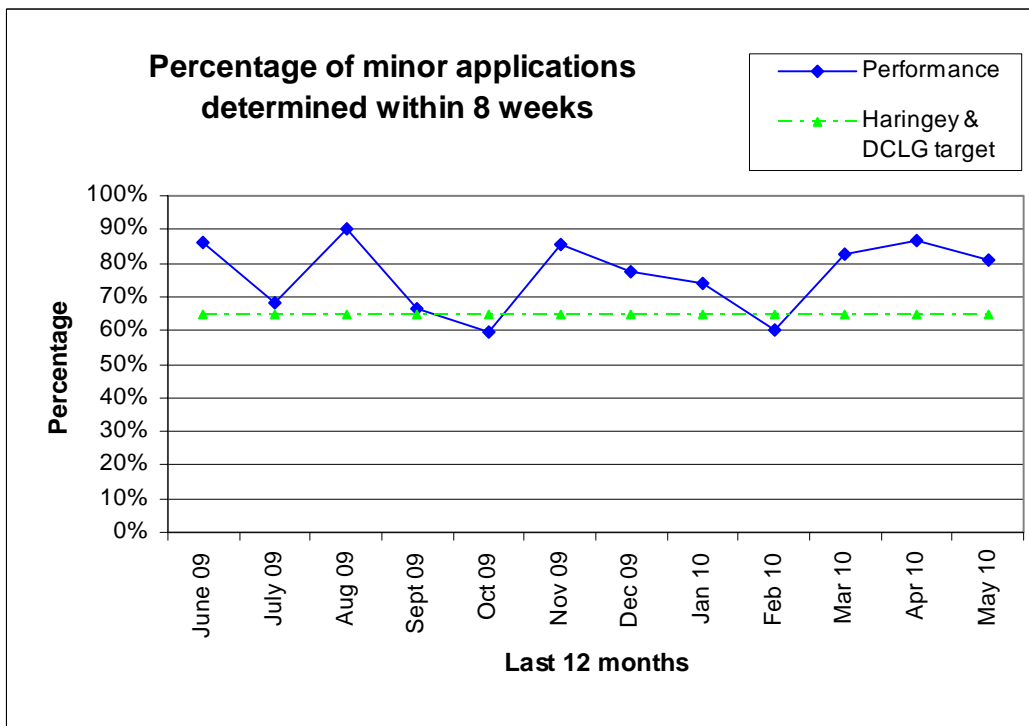
86% of other applications were determined within 8 weeks (1126 out of 1312 cases)

The 12 month performance for each category is shown in the following graphs:

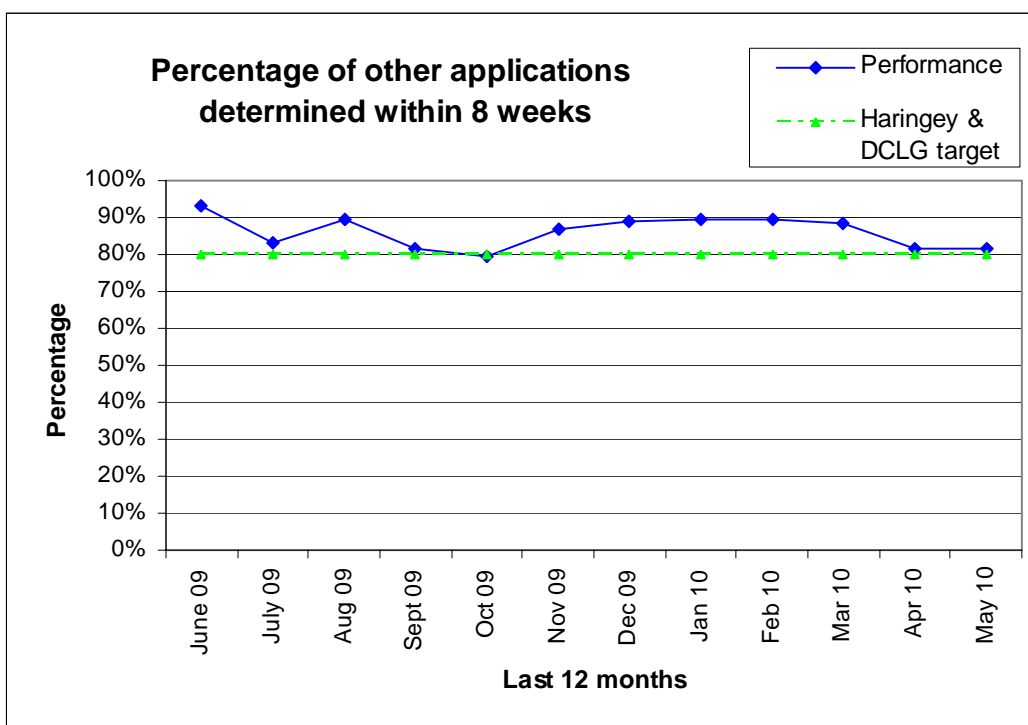
Major applications – last 12 months



Minor applications – last 12 months



Other applications – last 12 months



Background/Targets

NI 157 (formerly BV 109) is one of the Department for Communities and Local Government (DCLG) National Indicators for 2010/11.

It sets the following targets for determining planning applications:

- a. 60% of major applications within 13 weeks
- b. 65% of minor applications within 8 weeks
- c. 80% of other applications within 8 weeks

Haringey has set its own targets for 2010/11 in relation to NI 157. These are set out in Planning & Regeneration (P&R) Business Plan 2010-13 and are to determine:

- a. 60% of major applications within 13 weeks
- b. 65% of minor applications within 8 weeks
- c. 80% of other applications within 8 weeks

Appendix I

Explanation of categories

The NI 157 indicator covers planning applications included in the DCLG PS1/2 statutory return.

It *excludes* the following types of applications - TPO's, Telecommunications, Reserve Matters and Observations.

The definition for each of the category of applications is as follows:

Major applications -

For dwellings, where the number of dwellings to be constructed is 10 or more
For all other uses, where the floorspace to be built is 1,000 sq.m. or more, or where the site area is 1 hectare or more.

Minor application -

Where the development does not meet the requirement for a major application nor the definitions of Change of Use or Householder Development.

Other applications -

All other applications, *excluding* TPO's, Telecommunications, Reserve Matters and Observations.

DEVELOPMENT CONTROL PERFORMANCE STATISTICS

GRANTED / REFUSAL RATES FOR DECISIONS

May 2010 Performance

In May 2010, excluding Certificate of Lawfulness applications, there were 137 applications determined of which:

87% were granted (119 out of 137)

13% were refused (18 out of 137)

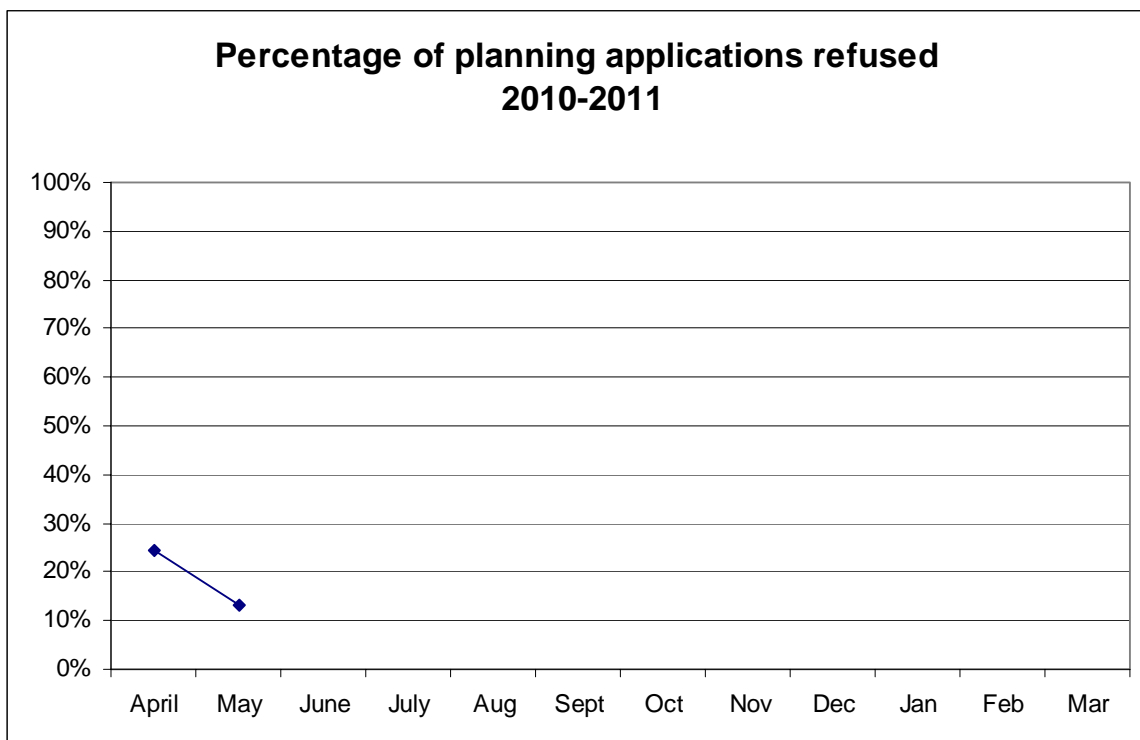
Year Performance – 2010/11

In the financial year 2010/11 up to the end of May, excluding Certificate of Lawfulness applications, there were 248 applications determined of which:

82% were granted (203 out of 248)

18% were refused (45 out of 248)

The monthly refusal rate is shown on the following graph:



DEVELOPMENT MANAGEMENT PERFORMANCE STATISTICS

LOCAL INDICATOR (FORMERLY BV204) - APPEALS AGAINST REFUSAL OF PLANNING PERMISSION

May 2010 Performance

In May 2010 there was 1 planning appeal determined against Haringey's decision to refuse planning permission, with performance being as follows -

100% of appeals allowed on refusals (1 out of 1 cases)

0% of appeals dismissed on refusals (0 out of 1 cases)

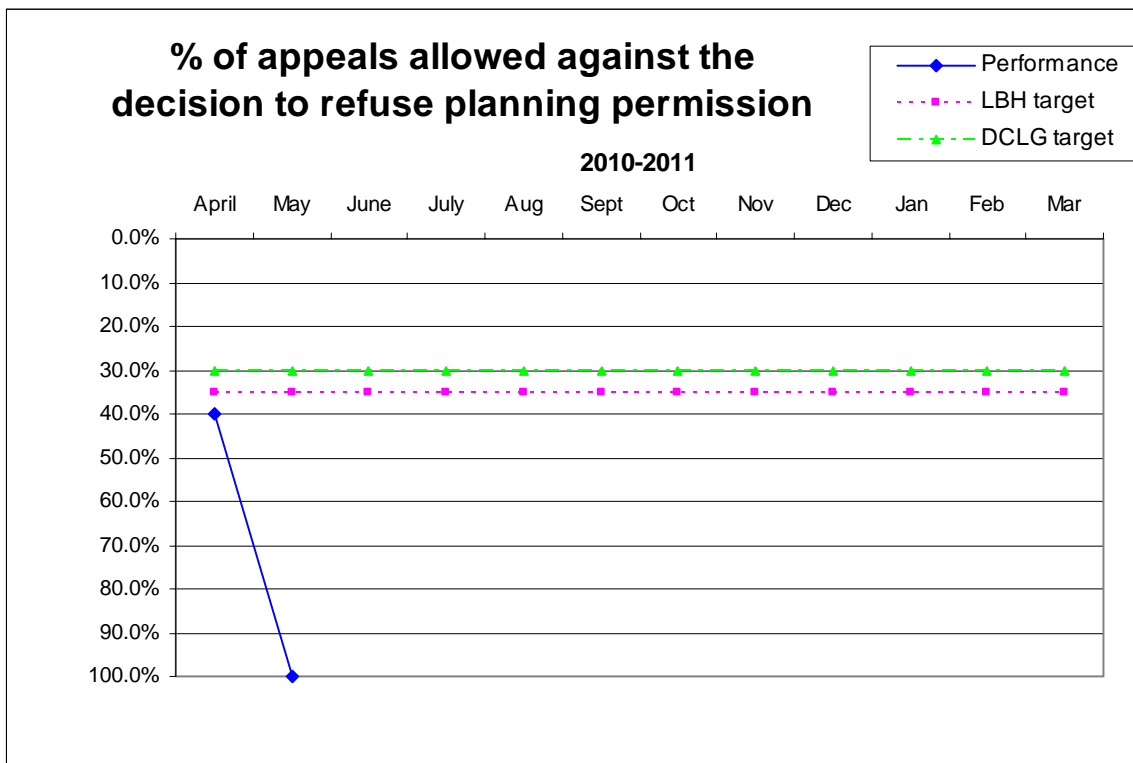
Year Performance – 2010/11

In the financial year 2010/11, up to the end of May, there were 6 planning appeals determined against Haringey's decision to refuse planning permission, with performance being as follows -

50% of appeals allowed on refusals (3 out of 6 cases)

50% of appeals dismissed on refusals (3 out of 6 cases)

The monthly performance is shown in the following graph:



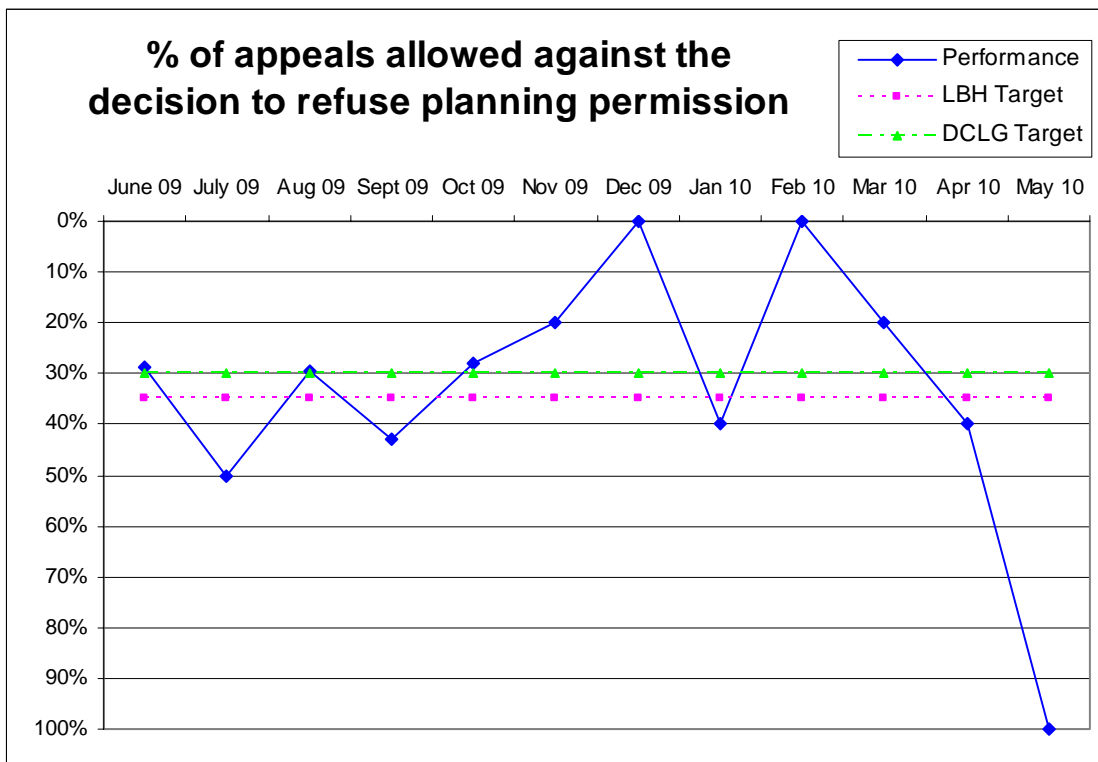
Last 12 months performance – June 2009 to May 2010

In the 12 month period June 2009 to May 2010 there were 94 planning appeals determined against Haringey's decision to refuse planning permission, with performance being as follows -

29.8% of appeals allowed on refusals (28 out of 94 cases)

70.2% of appeals dismissed on refusals (66 out of 94 cases)

The monthly performance for this period is shown in the following graph:



Background/Targets

This is no longer included in DCLG's National Indicator set. However it has been retained as a local indicator.

It sets a target for the percentage of appeals allowed against the authority's decision to refuse planning permission.

The target that was set by DCLG in 2007/08 was 30%^

Haringey has set its own target for 2010/11 in relation to this local indicator. This is set out in P&R Business Plan 2010-13.

The target set by Haringey for 2010/11 is 35%

(^ The lower the percentage of appeals allowed the better the performance)