

Planning Committee 8 March 2010

## DEVELOPMENT MANAGEMENT PERFORMANCE STATISTICS

### **NATIONAL INDICATOR NI 157 - DETERMINING PLANNING APPLICATIONS**

#### **January 2010 Performance**

In January 2010 there were 120 planning applications determined, with performance in each category as follows -

0% of major applications were determined within 13 weeks (0 out of 2)

74% of minor applications were determined within 8 weeks (17 out of 23 cases)

89% of other applications were determined within 8 weeks (85 out of 95 cases)

For an explanation of the categories see Appendix I

#### **Year Performance – 2009/10**

In the financial year 2009/10, up to the end of January, there were 1397 planning applications determined, with performance in each category as follows -

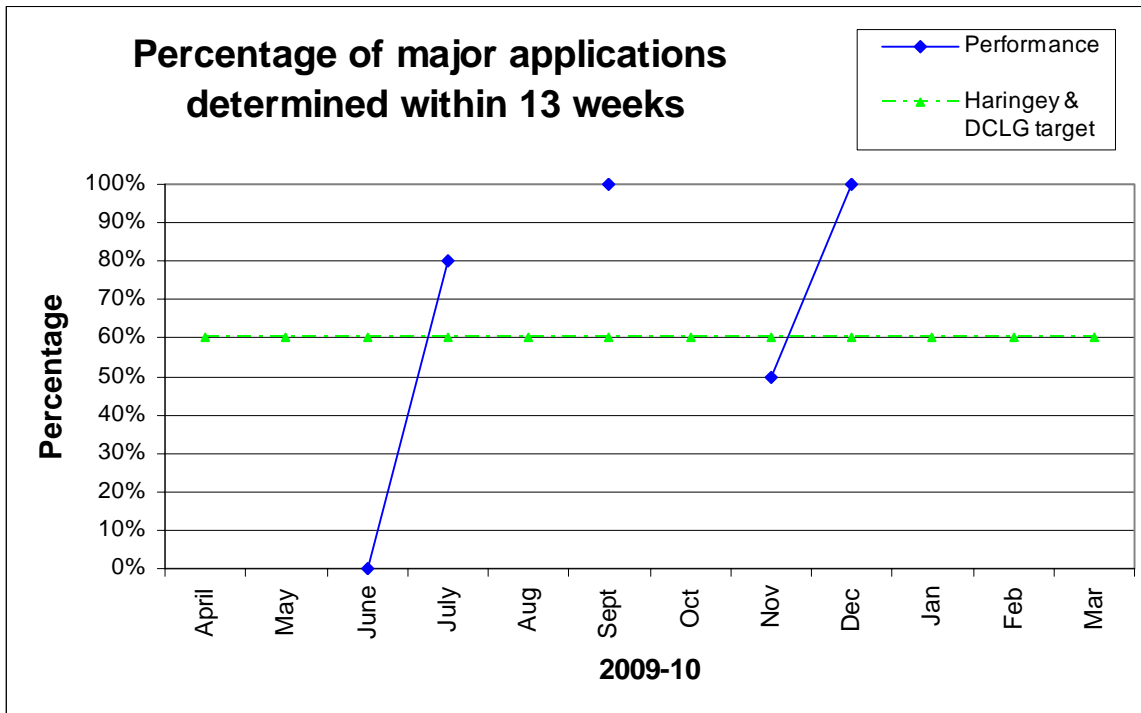
67% of major applications were determined within 13 weeks (10 out of 15)

76% of minor applications were determined within 8 weeks (238 out of 312 cases)

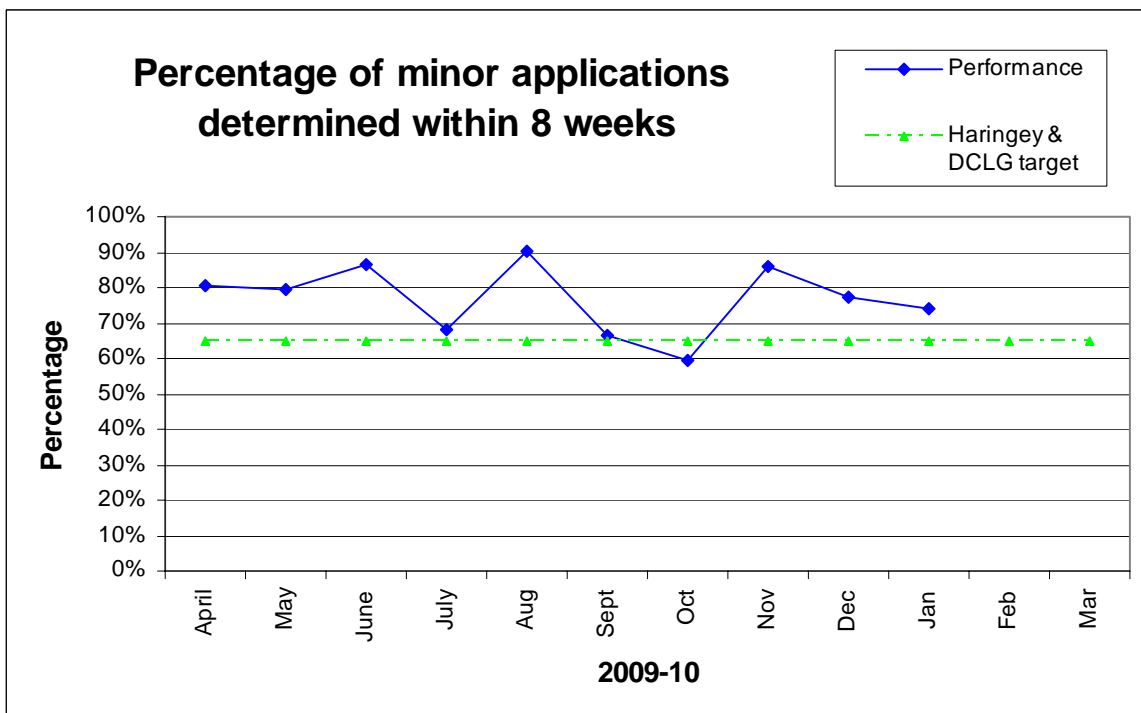
87% of other applications were determined within 8 weeks (933 out of 1070 cases)

The monthly performance for each of the categories is shown in the following graphs:

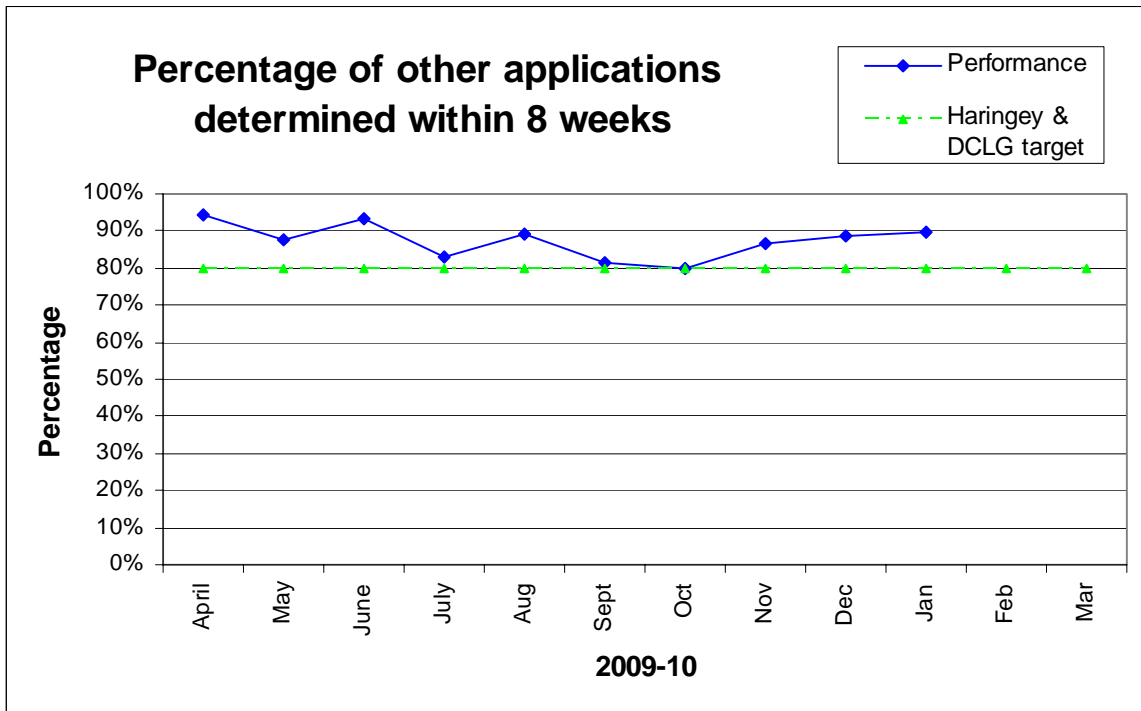
**Major Applications 2009/10**



**Minor Applications 2009/10**



**Other applications 2009/10**



**Last 12 months performance – February 2009 to January 2010**

In the 12 month period February 2009 to January 2010 there were 1647 planning applications determined, with performance in each category as follows -

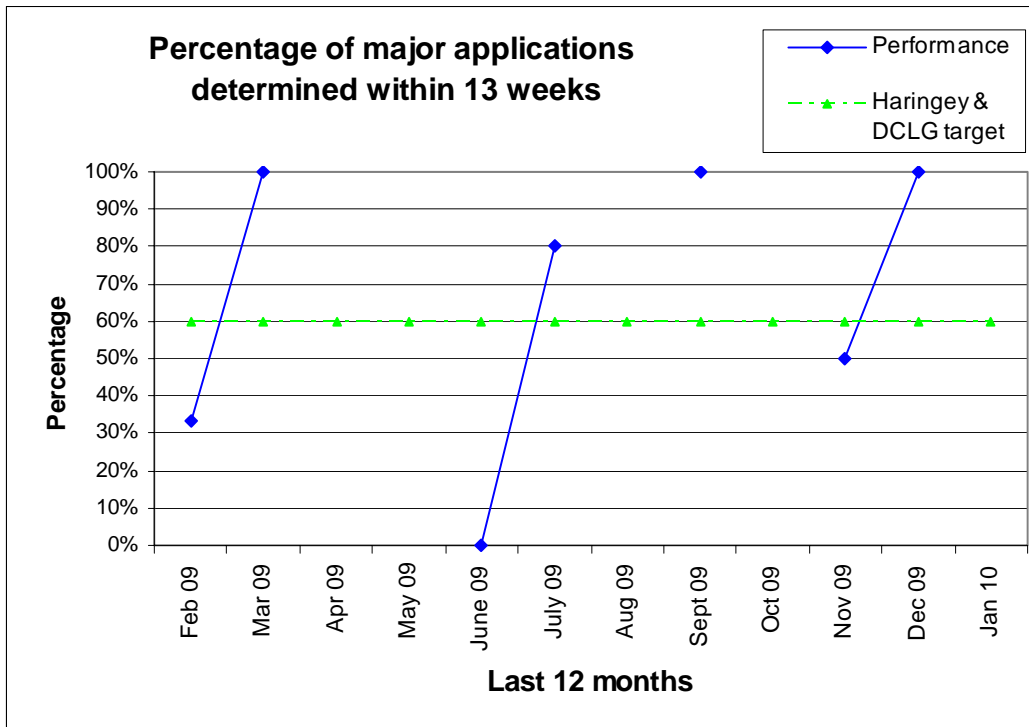
65% of major applications were determined within 13 weeks (13 out of 20)

78% of minor applications were determined within 8 weeks (298 out of 382 cases)

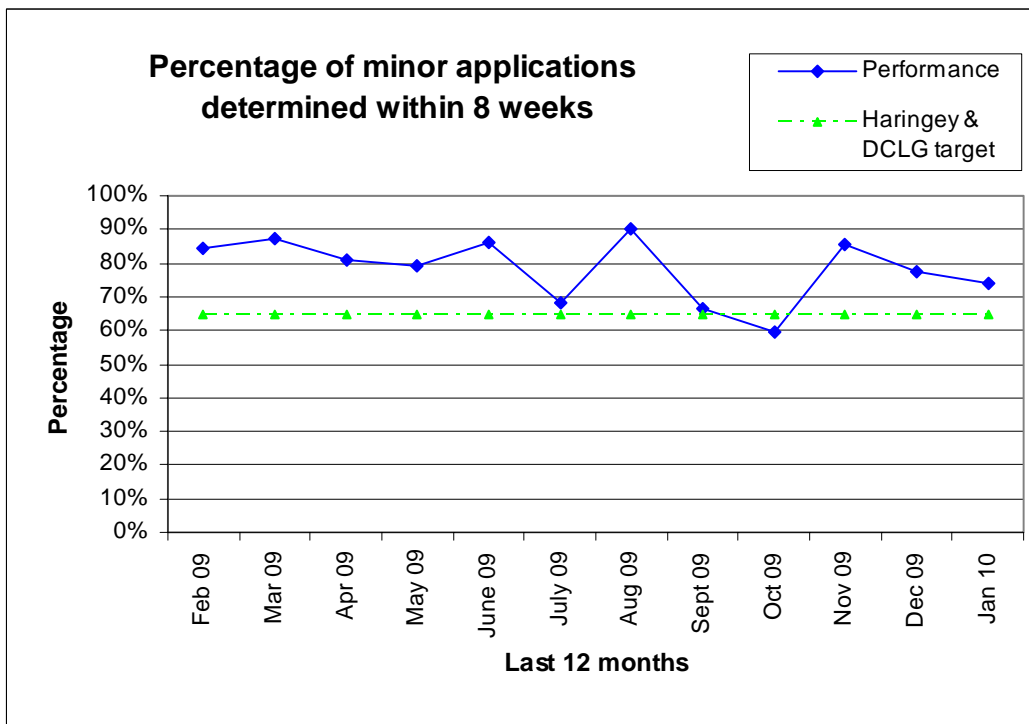
87% of other applications were determined within 8 weeks (1083 out of 1245 cases)

The 12 month performance for each category is shown in the following graphs:

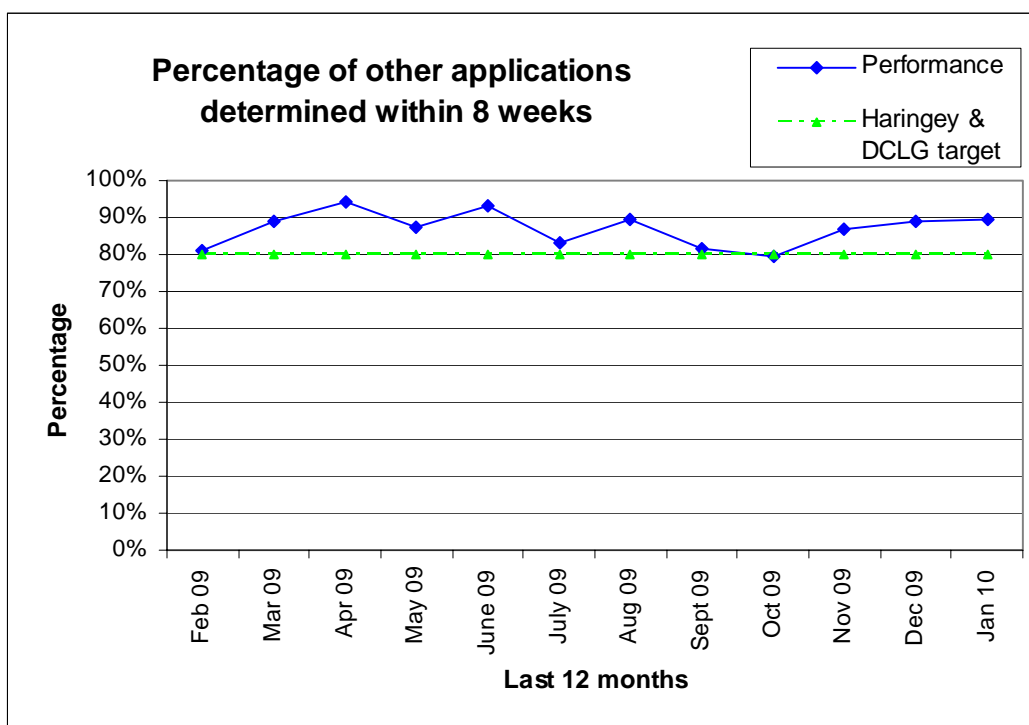
**Major applications – last 12 months**



**Minor applications – last 12 months**



## Other applications – last 12 months



## Background/Targets

NI 157 (formerly BV 109) is one of the Department for Communities and Local Government (DCLG) National Indicators for 2009/10.

It sets the following targets for determining planning applications:

- a. 60% of major applications within 13 weeks
- b. 65% of minor applications within 8 weeks
- c. 80% of other applications within 8 weeks

Haringey has set its own targets for 2009/10 in relation to NI 157. These are set out in Planning & Regeneration (P&R) Business Plan 2009-12 and are to determine:

- a. 60% of major applications within 13 weeks
- b. 65% of minor applications within 8 weeks
- c. 80% of other applications within 8 weeks

## **Appendix I**

### **Explanation of categories**

The NI 157 indicator covers planning applications included in the DCLG PS1/2 statutory return.

It *excludes* the following types of applications - TPO's, Telecommunications, Reserve Matters and Observations.

The definition for each of the category of applications is as follows:

Major applications -

For dwellings, where the number of dwellings to be constructed is 10 or more  
For all other uses, where the floorspace to be built is 1,000 sq.m. or more, or where the site area is 1 hectare or more.

Minor application -

Where the development does not meet the requirement for a major application nor the definitions of Change of Use or Householder Development.

Other applications -

All other applications, *excluding* TPO's, Telecommunications, Reserve Matters and Observations.

## DEVELOPMENT CONTROL PERFORMANCE STATISTICS

### GRANTED / REFUSAL RATES FOR DECISIONS

#### January 2010 Performance

In January 2010, excluding Certificate of Lawfulness applications, there were 95 applications determined of which:

77% were granted (73 out of 95)

23% were refused (22 out of 95)

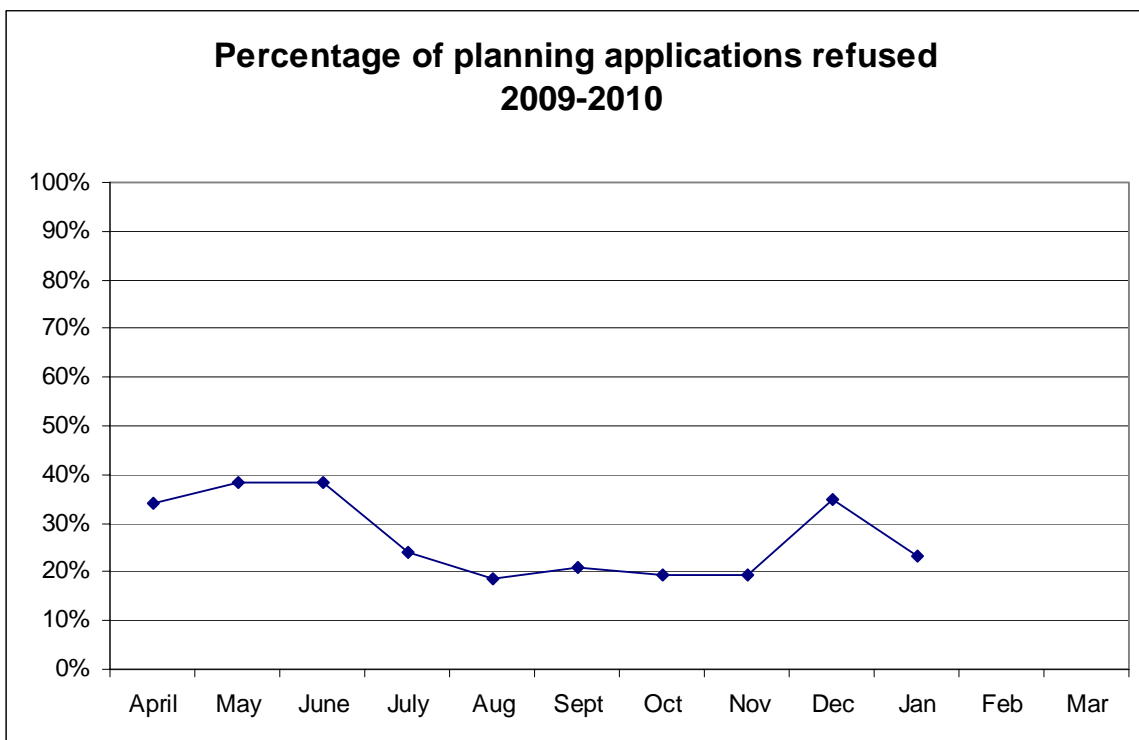
#### Year Performance – 2009/10

In the financial year 2009/10 up to the end of January, excluding Certificate of Lawfulness applications, there were 1173 applications determined of which:

73% were granted (855 out of 1173)

27% were refused (318 out of 1173)

The monthly refusal rate is shown on the following graph:



DEVELOPMENT MANAGEMENT PERFORMANCE STATISTICS

**LOCAL INDICATOR (FORMERLY BV204) -  
APPEALS AGAINST REFUSAL OF PLANNING PERMISSION**

**January 2010 Performance**

In January 2010 there were 10 planning appeals determined against Haringey's decision to refuse planning permission, with performance being as follows -

40.0% of appeals allowed on refusals (4 out of 10 cases)

60.0% of appeals dismissed on refusals (6 out of 10 cases)

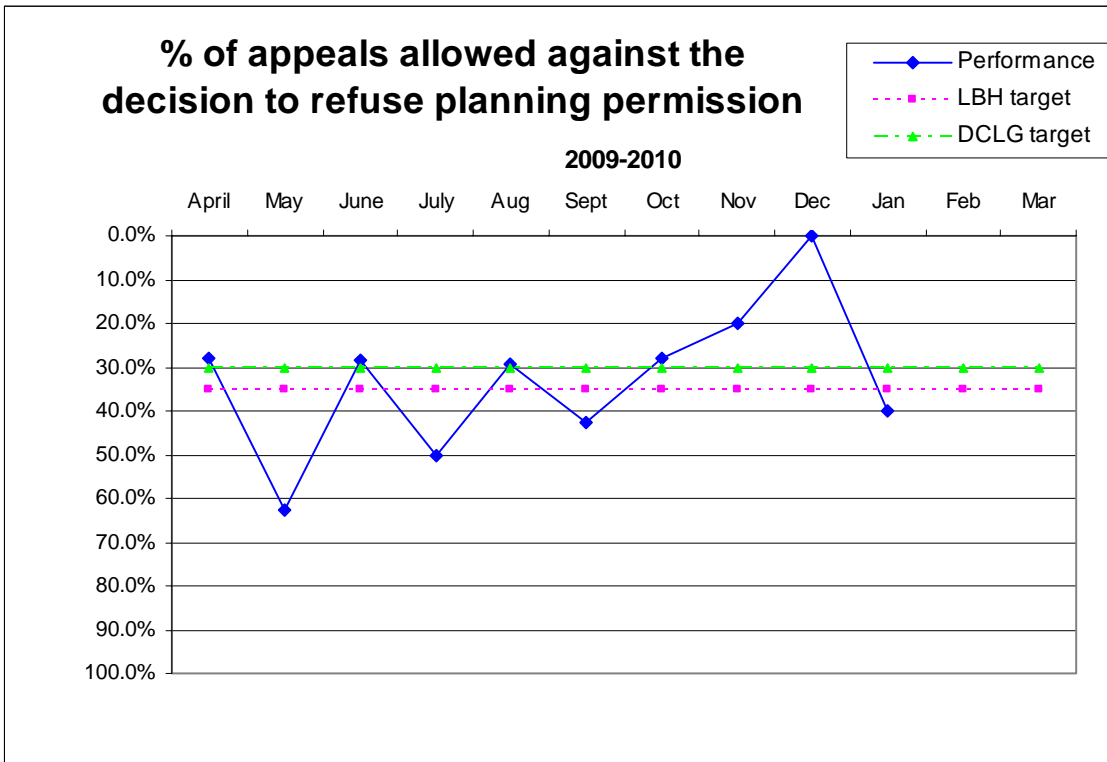
**Year Performance – 2009/10**

In the financial year 2009/10, up to the end of January, there were 99 planning appeals determined against Haringey's decision to refuse planning permission, with performance being as follows -

33.3% of appeals allowed on refusals (33 out of 99 cases)

66.7% of appeals dismissed on refusals (66 out of 99 cases)

The monthly performance is shown in the following graph:





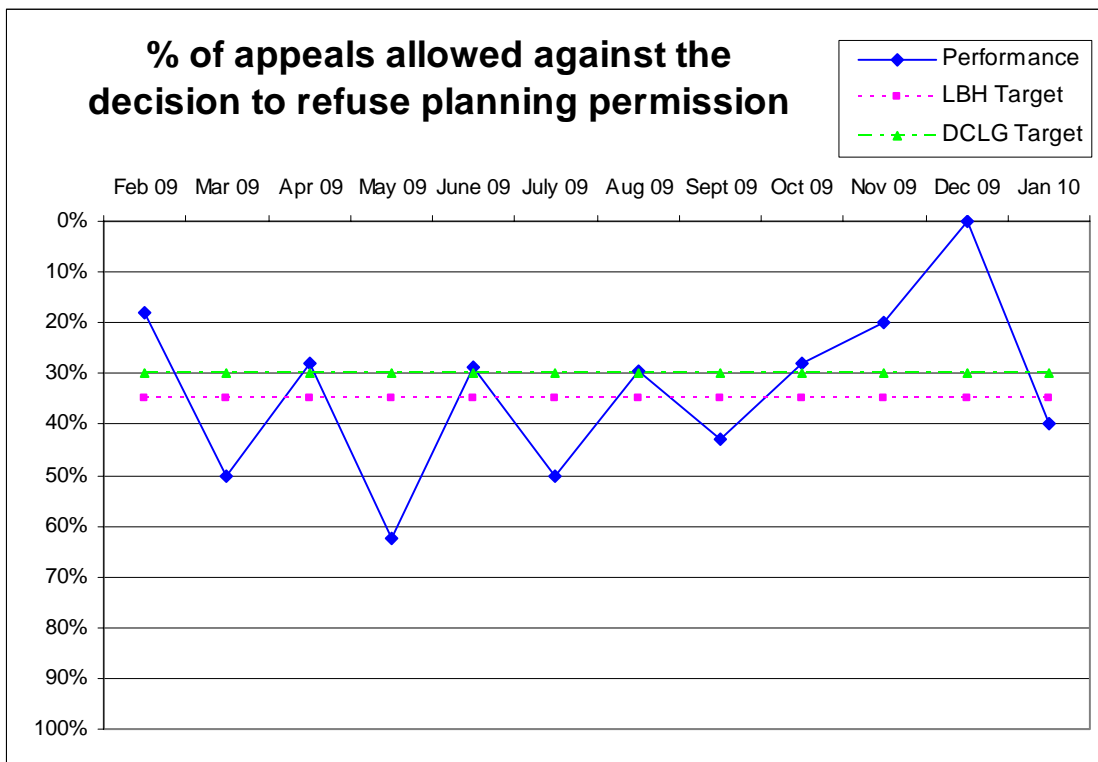
**Last 12 months performance – February 2009 to January 2010**

In the 12 month period February 2009 to January 2010 there were 129 planning appeals determined against Haringey's decision to refuse planning permission, with performance being as follows -

31.8% of appeals allowed on refusals (41 out of 129 cases)

68.2% of appeals dismissed on refusals (88 out of 129 cases)

The monthly performance for this period is shown in the following graph:



## **Background/Targets**

This is not included in DCLG's National Indicators for 2009/10. However it has been retained as a local indicator.

It sets a target for the percentage of appeals allowed against the authority's decision to refuse planning permission.

The target that was set by DCLG in 2007/08 was 30%^

Haringey has set its own target for 2009/10 in relation to this local indicator. This is set out in P&R Business Plan 2009-12.

The target set by Haringey for 2009/10 is 35%

*(^ The lower the percentage of appeals allowed the better the performance)*