

# **Overview and scrutiny - how NICE guidance can improve scrutiny**

## **Overview and Scrutiny Committee - Haringey**

Thara Raj

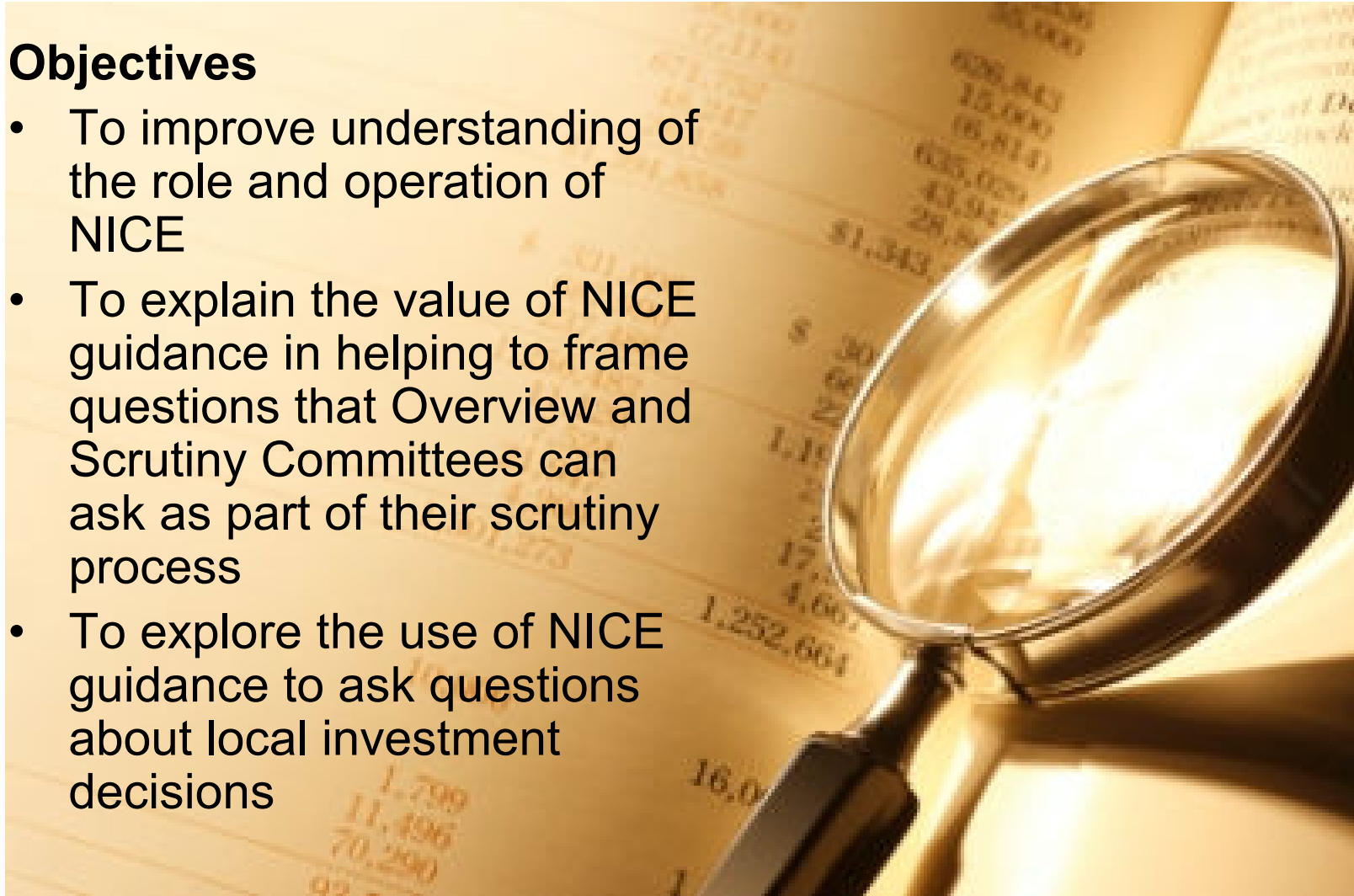
Implementation consultant – London

1 February 2010

# Welcome!

## Objectives

- To improve understanding of the role and operation of NICE
- To explain the value of NICE guidance in helping to frame questions that Overview and Scrutiny Committees can ask as part of their scrutiny process
- To explore the use of NICE guidance to ask questions about local investment decisions



# What is NICE?

*The National Institute for Health and Clinical Excellence (NICE) is the **independent** organisation responsible for providing national guidance on **the promotion of good health** and the **prevention and treatment of ill health**.*



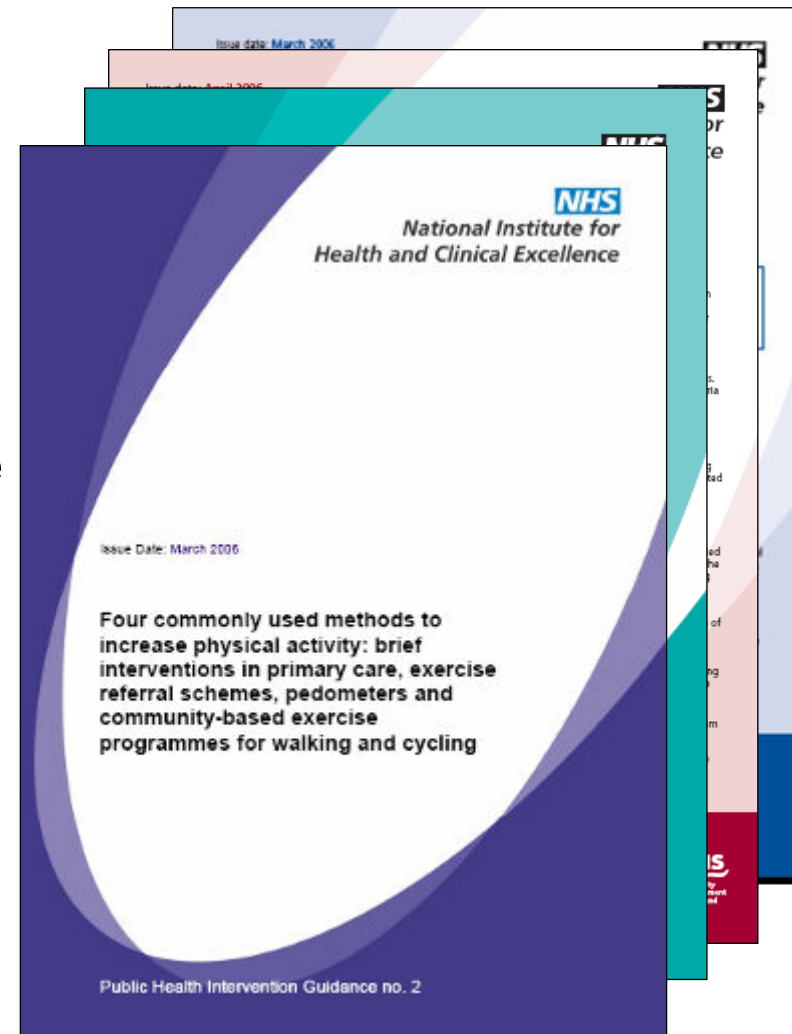
# Core principles of all NICE guidance



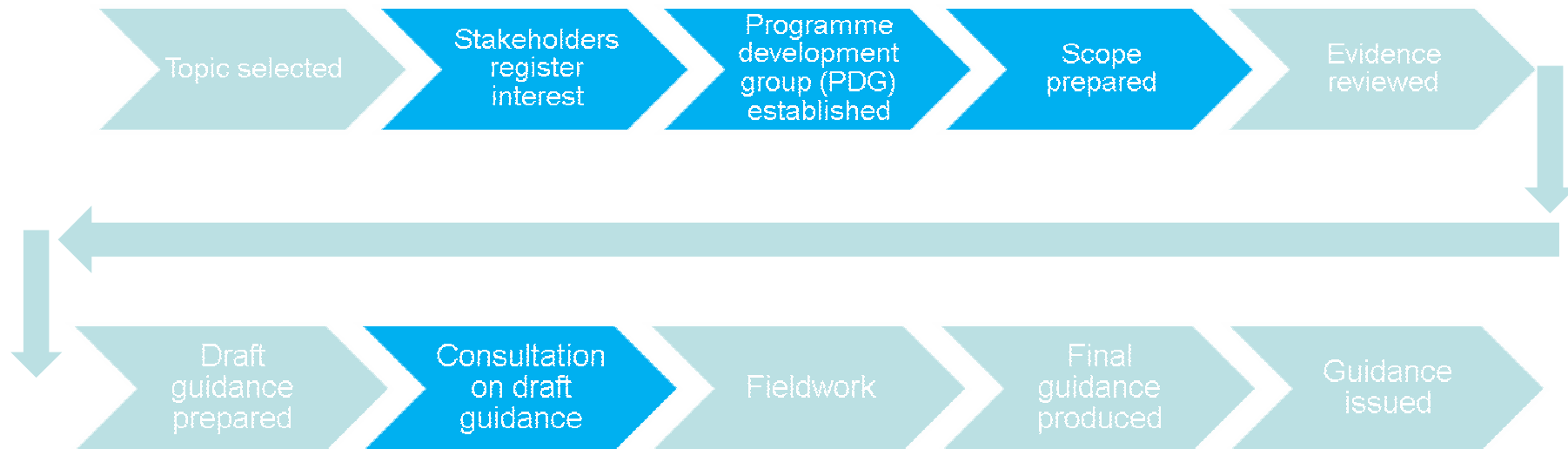
- Comprehensive evidence base
- Expert input
- Patient and carer involvement
- Independent advisory committees
- Genuine consultation
- Regular review
- Open and transparent process.

# Four types of guidance

- **Technology Appraisals** - guidance on the use of new and existing medicines and treatments
- **Interventional Procedures Guidance** for procedures within the NHS
- **Clinical guidelines** - guidance on the appropriate treatment and care of people with specific diseases and conditions within the NHS.
- **Public health guidance** - guidance on the promotion of good health and the prevention of ill health for those working in the NHS, local authorities and the wider public and voluntary sector

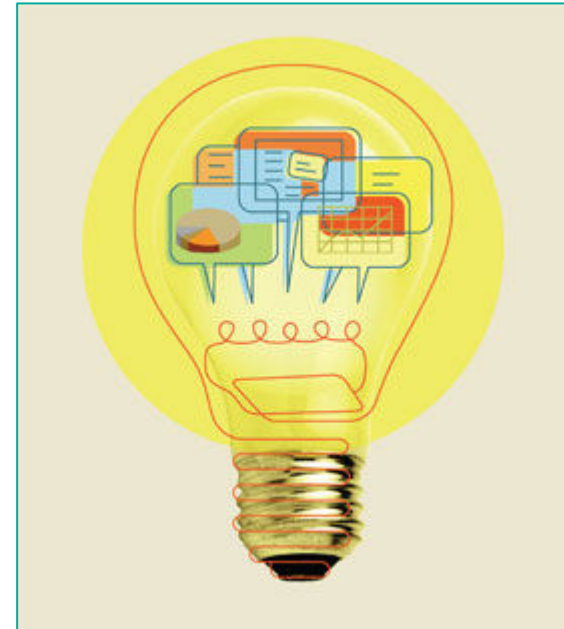


# Public health guidance process



# What do we mean by 'evidence?'

- There is a lot of data about this?
- Other people are doing this?
- There is a research study which shows this is effective?
- There is a significant body of research which shows that this is effective?

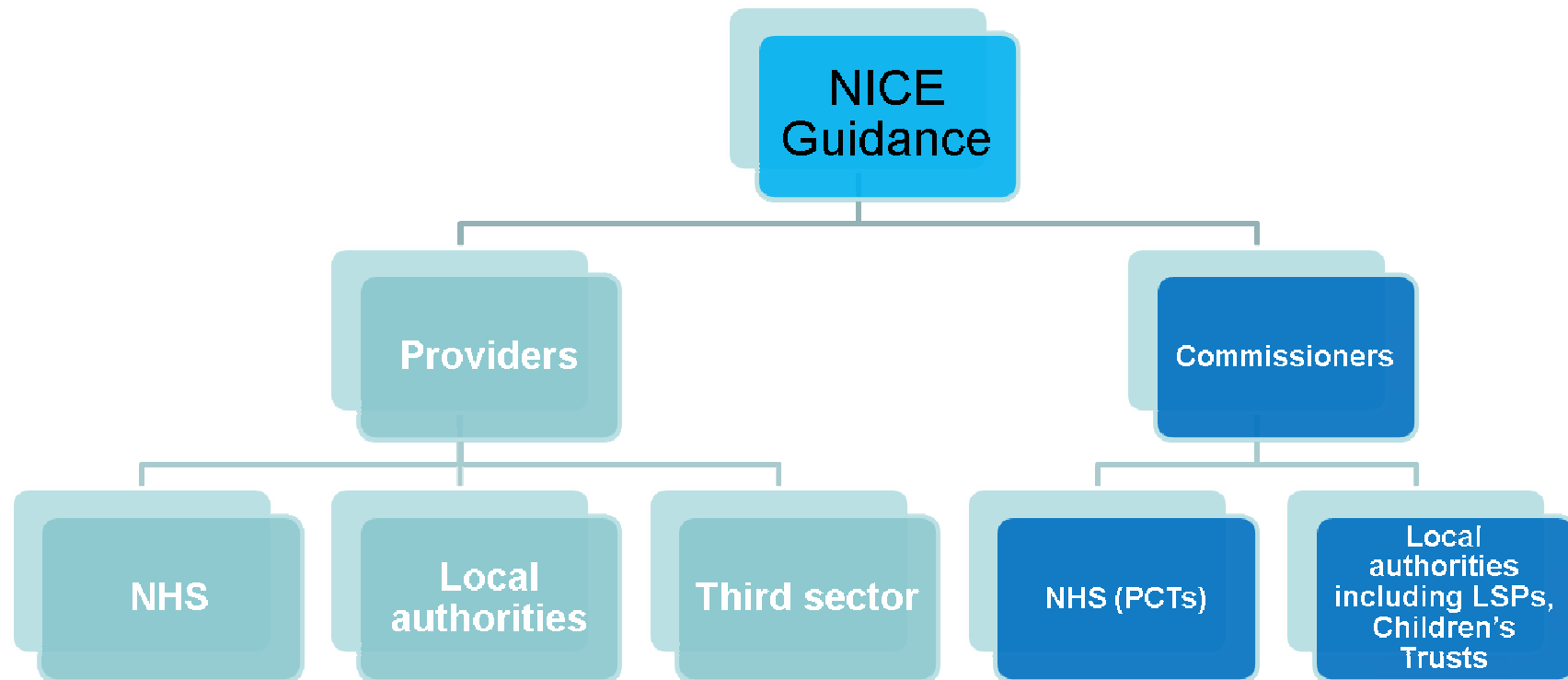


# Who writes the guidance?





# Making use of NICE guidance



# Why use NICE guidance?

- Reducing variation
- Reducing inequalities
- Improving quality of care
- Reducing waste
- Ensuring best use of resources



# Scrutinising [effective community engagement]

- Public health guidance
  - **PH9 Community engagement**
- Take a look at the guidance
- Use the guidance to identify two or three questions you could helpfully ask to scrutinise the provision of these services locally



# Some suggestions for scrutiny questions – [effective community engagement]

Are the prerequisites in place?

e.g. funding for community engagement and for evaluation

Is the infrastructure in place?

e.g. training

What approaches are being used?

e.g. recruitment of existing groups as agents of change

# Scrutinising [older people's] services e.g. dementia

- Clinical guideline
  - **CG42 Dementia**
- Take a look at the guidance
- Use the guidance to identify two or three questions you could helpfully ask to scrutinise the provision of these services locally



# Some suggestions for scrutiny questions – [dementia]

- Is a combined care plan agreed by health and social services that takes into account the changing needs of the person with dementia and his or her carers?
- Has a named health and/or social care worker been appointed to operate the care plan?
- Has the person with dementia and/or carer endorsed the care plan?

# Scrutinising [older people's] services e.g. falls

- Clinical guideline
  - **CG21 Falls**



- Take a look at the guidance
- Use the guidance to identify two or three questions you could helpfully ask to scrutinise the provision of these services locally

# Some suggestions for scrutiny questions – [dementia]

- Is a combined care plan agreed by health and social services that takes into account the changing needs of the person with dementia and his or her carers?
- Has a named health and/or social care worker appointed to operate the care plan?
- Has the person with dementia and/or carer endorsed the care plan?



# Key points from the session



- NICE guidance helps with promoting good health as well as treating ill health
- There's more to NICE than drug appraisals!
- The guidance is written by professionals, advised by patients and carers
- The evidence we use is very rigorous – you can depend on NICE
- The guidance represents 'best value' – an effective use of resources
- Clinical guidelines, technology appraisals and public health guidance can be used to improve scrutiny – of the NHS and your local authority.

# How to find us...

To contact the implementation consultants

[fieldteam@nice.org.uk](mailto:fieldteam@nice.org.uk)

For enquiries about NICE or our guidance

[nice@nice.org.uk](mailto:nice@nice.org.uk)

Visit the NICE website

[www.nice.org.uk](http://www.nice.org.uk)

Use NHS Evidence for a wider search

[www.evidence.nhs.uk](http://www.evidence.nhs.uk)