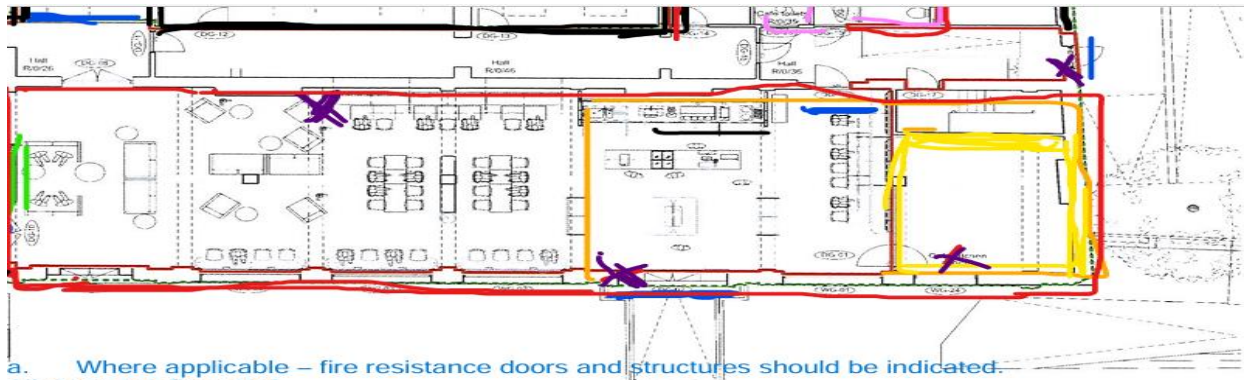


# GINA'S (BLOOMING SCENT FLOOR PLAN)

- Kitchen
- The location of alcohol storage
- Egress/Escape route
- Existing premise licence
- Stage (removable)
- X Fire safety
- Toilets and storage
- New layout of cafe



- a. Where applicable – fire resistance doors and structures should be indicated.  
All doors are fire rated
- b. Type of surface linings and finishes to walls and ceilings (in new constructions only)  
Plaster/Brick
- c. Emergency lighting  
Installed in every section
- d. Maintained exit signage  
Not maintained, just glow in the dark (Photoluminescent Exit Signs)
- e. Door furniture  
, for example panic bars  
Panic bar at the back door leading to the decking.
- f. Where applicable - fire alarm and smoke detection details  
In each section there is smoke detector (you can find it on the ceiling) and MCP (manual call point) is next to the two main exit routes
- g. Firefighting equipment  
Fire extinguishers, fire blanket