

# Better Care Fund Plan 2021/22 and 2022/23

**Beverley Tarka, Director of Adults and Health, London  
Borough of Haringey**

**Rachel Lissauer, Director of Integration (Haringey),  
North Central London Integrated Care Board (NCL ICB)**

# Purpose and Recommendations

- Presentation is summary of contents of Better Care Fund (BCF) Plan to support Health and Well-Being Board in its responsibility to sign-off Plan
- Presentation will be accompanied by finalised documents forwarded on prior to HWB meeting on 21-Sep-22

Health and Well-Being Board will be requested to:

- Note the year end summary of the Haringey BCF Plan for 2021/22
- Endorse the BCF Plan submission for 2022/23 which includes:
  - Updated Haringey Better Care Fund (BCF) Plan Narrative;
  - Investment schedule and the trajectories for the metrics within its scope. The Board is asked to confirm the Plan meets the national BCF Plan Conditions;
  - Demand & Capacity analysis associated with Haringey's intermediate care service

# Background

- **BCF is national programme to support integration of health and social care, to promote independence of residents and to improve their outcomes**
- Haringey's BCF Plan aligns with the Borough Plan and is key to delivering Haringey's multi-agency Ageing Well Strategy
- DHSC require H&W Board to report on progress on last year's investments – Haringey's 2021/22 BCF Year End Summary is included with this presentation
- National release of BCF Plan requirements, guidance and templates for 2022/23 to local areas was delayed into late August 2022.
- Local Plans to be submitted to national BCF Team no later than by 26-Sep-22
- Information presented in the Plan should give the Board the assurance Haringey is maintaining its commitment to health and social care integration

# National BCF Conditions 2022/23

- National BCF requirements are for each Board to submit its Plan to national BCF Team, who will scrutinise contents to assure national conditions met.
- Boards need to submit 3 documents to the national Team to outline its Plan

The National BCF Policy Framework are:

- A jointly agreed local Plan signed off by the Health and Well-being Board;
- NHS contribution to social care maintained in line with uplift to NHS (@5.7%)
- Invest in NHS commissioned out-of-hospital services.
- Implementing the BCF policy objectives:
  - Enable people to stay well, safe and independent at home for longer.
  - Provide the right care in the right place at the right time.

# Haringey Requirements 2022/23

- Haringey’s BCF Plan is a £34.7m investment in 2022/23 – nationally set level of minimum investment
- Comprised of £22.2m investment as a Minimum NHS Contribution, of which at least:
  - £7.3m needs to be on ‘Adult Social Care related spend’
  - £6.3m needs to be NHS commissioned ‘out-of-hospital’ spend
- Additional funding for social care directly via Improved Better Care Fund (iBCF) & Disabled Facilities Grant (DFGs)
- Table below summarises the funding expected for the BCF Plan in 2022/23
- Represents £1.5m uplift on 2021/22, with £391k uplift in ASC spend from Minimum NHS Contribution
- **Haringey’s submission for 223/23 will meet conditions for minimum investment if signed-off by HW Board**

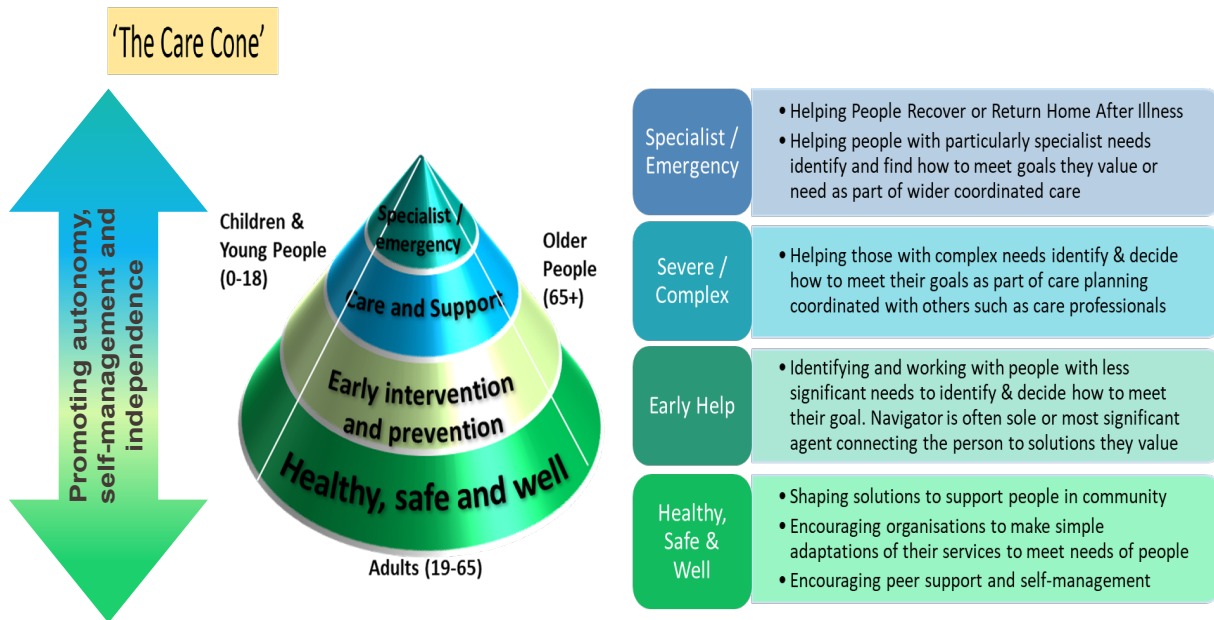
	2021/22		2022/23	Req. Change 22-23 v 21-22	
	Required	Actual	Required	Amount	% increase
<b>Haringey BCF Plan Investment</b>					
Disabled Facilities Grant	£2,678,851	£2,678,851	£2,678,851	£0	0%
iBCF, including WP Grant	£9,518,076	£9,518,076	£9,806,399	£288,323	3.0%
<b>Minimum CCG Contribution</b>	<b>£21,020,860</b>	<b>£21,020,860</b>	<b>£22,210,641</b>	<b>£1,189,781</b>	<b>5.7%</b>
Of which, minimum spend that must be on:					
- NHS commissioned Out-of-Hospital Spend	£5,973,532	£13,929,577	£6,311,634	£338,102	5.7%
- Adult Social Care Services Spend	£6,904,545	£6,904,545	£7,295,342	£390,797	5.7%
<b>TOTALS</b>	<b>£33,217,787</b>	<b>£33,217,787</b>	<b>£34,695,891</b>	<b>£1,478,103</b>	<b>4.4%</b>

Haringey has to submit:

- A BCF Narrative Plan
- An investment schedule & metrics spreadsheet
- **New:** Demand and Capacity spreadsheet outlining activity and supply issues associated with intermediate care

# Structure of Narrative

- Haringey's Narrative sets out how partners will address multi-agency challenges in as integrated a way as possible
- The Narrative is built around Haringey's integrated 'care cone' as framework that tailors needs of individuals to the best response in the system. The framework's aim is to:
  - Emphasise the importance of a strength-based approach, prevention, self-management and personalisation;
  - Where people do need help, to ensure 'right joined-up solutions for individuals are delivered at right time' as close to home as possible;
  - Help people avoid future health or social crises as far as possible and/or people can recover after crises, ideally at home;
- Our BCF funded schemes are tailored around the levels in the care cones, particularly the 'upper 3' elements



## Our Challenges

Plan describes three key challenges facing us locally and nationally:

1. Need to respond to legacy of pandemic particularly managing greater number of people whose underlying health worsened;
2. Ensuring out-of-hospital systems well prepared for increased activity in NHS Trusts to facilitate safe & timely hospital discharge in winter;
3. Addressing underlying issues associated with equity of access, outcomes and experience in Borough particular in deprived area

# Progress since 2021

Despite challenges, we have consistently improved our care and support - our 21/22 Summary & HWB report describes improvements made:

- Developed [Ageing Well Guide](#) and Ageing Well Resource Directory on the Council's web-site in 2022 with hints, tips and contacts to support people to stay as fit, well and independent as possible. Circulated 5,000 paper copies of the Guide through over 30+ organisations;
- Nearly 30% increase in the number of GP consultations for older people pre-pandemic and post-Wave 2 in 2021/22 with this level of consultations sustained into 2022. The number of these consultations was particularly high amongst those living in more deprived areas;
- Expanded access to our Multi-Agency Care and Coordination Team (MACCT) in community and in our Enhanced Health in Care Homes Teams in 2021/22 and 2022/23 to better manage and work with older patients with older residents in community and in care homes;
- NHS, Council and voluntary sector worked together at WHT, NMUH and other NCL hospitals to discharge more patients, predominantly back home, more quickly than at any time pre-COVID. For example, 94% of acute Haringey patients were discharged home from hospital between April and Jun-22, as part of our approach to 'Home First' approach which is where people tell us they would prefer to return;
- 'Home First' approach was supported by nearly 1,700 reablement episodes to help them recover their ability to undertake daily living tasks completed in 2021/22 (a 22% increase on 2019/20). 73% of these individuals did go on to have long-term care because they had recovered;
- Since pandemic, 64% increase in the typical month number of patients (to over 180) accessing multi-disciplinary Rapid Response service (usually responding within 2-4 hours) to treat people who are nearing, or at, a health crisis at home rather than in A&E;
- **As a result of the above, the number of emergency admissions of Haringey patients aged 65+ per head of older population reduced by 22% between Apr–Jun-22 v. 20. However, this means each patient now admitted had typically a greater level of multi-morbidity and acuity than their peers pre-pandemic. We also saw a reduced number of avoidable admissions, which is one of our BCF key metrics**

# New or Expanded Investments in 2022/23 North Central London Integrated Care System

Our BCF additional investment is split into several areas of the 'care cone' to help address challenges outlined earlier.

- *Early Help & Prevention:* Expand our investment in:
  - Building community assets via our Healthy Neighbourhoods model in east Haringey, a collaboration between statutory and VCSE partners, engaging and supporting communities on health- and social-orientated themes;
  - Consolidate support for our community navigator network provided through the voluntary and community sector;
  - Support for people with dementia as part of our Dementia Action Alliance & promote awareness to under-served groups.
- *Proactive & Anticipatory Care:* Increasing investment in:
  - Our community health services to provide long-term care;
  - ICB community equipment brought into BCF scope - first phase of planned Council/ICB pooled equipment budget;
- *Crisis Management:* Increasing investment in our intermediate care services between Council and ICB:
  - 'Home First' reablement and our ability to assess long-term care needs post-reablement;
  - Support for 'Home First' discharge for cases of people with challenging housing needs, e.g. needing deep-cleans etc.;
  - Short-term bedded intermediate care capacity for Haringey patients in a nursing home, and strengthen the Community Health/Council MDT, to promote recovery and move-on.



**QUESTIONS?**