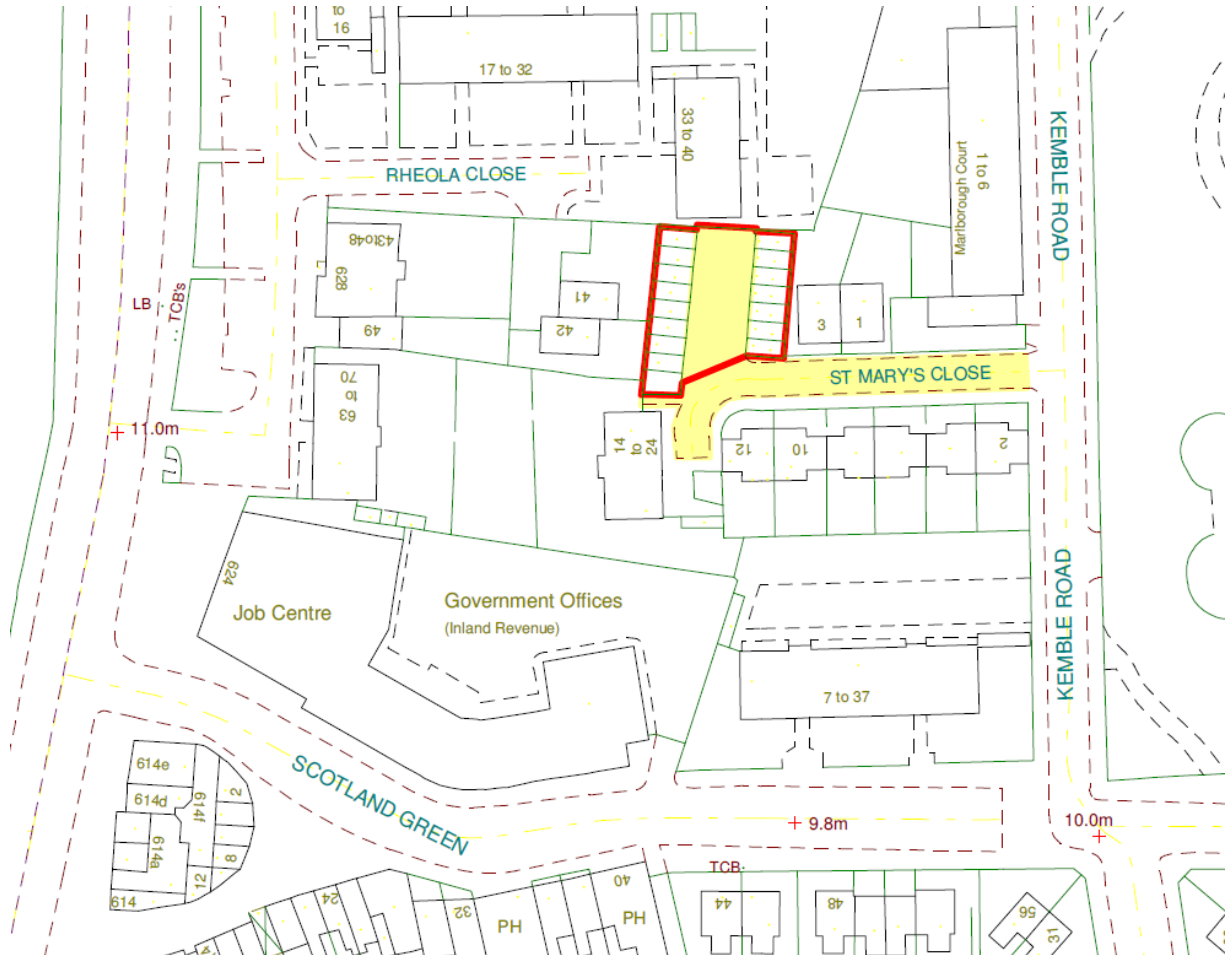


**Appendix 1**

**Site Red Line Boundary – St Mary's Close**

The plan below outlines the red line boundary for the development site.

At St Marys Close, the red line boundary runs around the perimeter of the car park.



## Site Red Line Boundary – Nightingale Lane

The plan below outlines the red line boundary for the development site.

At Nightingale Lane, the red line boundary runs up against the adjoining property, number 44 and to the start of the pavement on Nightingale Lane. It then cuts along brook road in line with the pavement, tapering off to give an overall triangular shape to the development site.

