

Summary of the Model

Strong Communities

Layer 1. Protected: At the outer layer of the circle, the young person is protected by strong community, strong family, good mental health and is on a pathway to success in education and employment

- Emphasis on **building protective factors** that keep young people safe

Strong families and relationships

2. Early risk factors: in the second layer risk factors across one or more of the domains, start to put the young person at increased risk.

- **Identifying** and addressing risk factors **as early as possible**

3. Risk factors accumulating: as risk factors accumulate, become more complex or more entrenched over time, the young person's risk increases and there are likely to be impacts on their wellbeing and life chances.

- Providing **targeted, sustained and joined up support** as risk factors accumulate

5. Involved in gangs and youth violence: the young person is directly involved in gangs and violence and is likely to be excluded from mainstream society (from school, family, community).

- Where it is necessary to take a punitive route, a shared commitment to facilitate **re-integration**

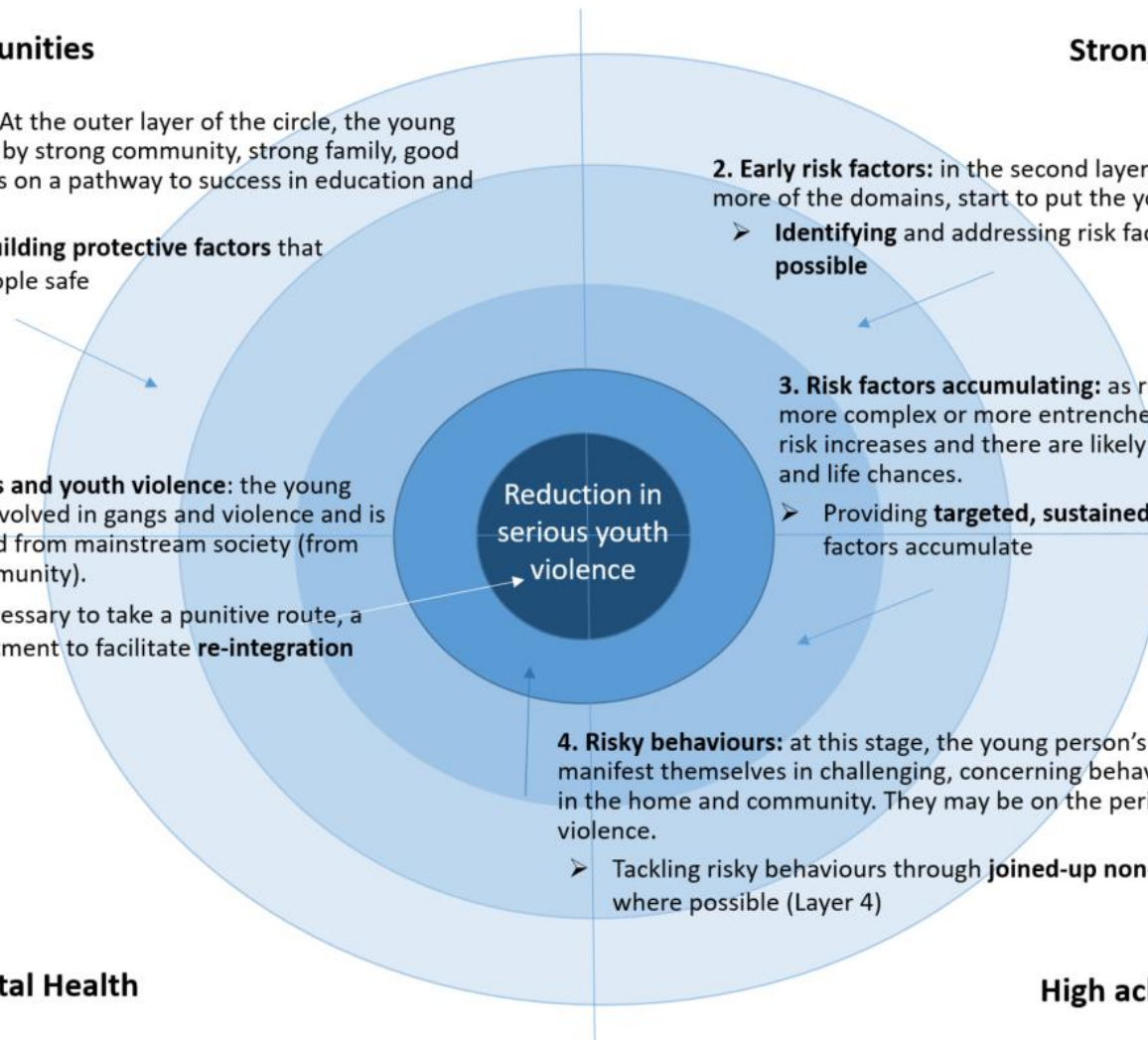
Reduction in serious youth violence

4. Risky behaviours: at this stage, the young person's problems are likely to manifest themselves in challenging, concerning behaviour, including at school, in the home and community. They may be on the peripheries of gangs and violence.

- Tackling risky behaviours through **joined-up non-punitive pathways** where possible (Layer 4)

Positive Mental Health

High achievement and opportunity



Summary of the Model

The table below summarises the main risk and protective factors for each layer of risk and in relation to each of the four outcome areas outlined above

	Community	Relationships	Mental Health	Attainment & Opportunity	Approach
Layer 1 – Protection	<ul style="list-style-type: none"> • Low levels of crime and ASB • Intolerance of violence • Availability of meaningful developmental activities • Safe spaces to spend time • Visible positive role models. 	<ul style="list-style-type: none"> • Connectedness to family or trusted adults • Ability to discuss problems with parents • High parental expectations for school performance • Shared activities with family • Consistent presence of parent(s) • Frequent social activity • Family use of constructive strategies for coping with problems • Strong relationships with peers 	<ul style="list-style-type: none"> • Healthy relationships • Developed social skills • Frequent social activity • Stable home environment 	<ul style="list-style-type: none"> • Commitment to school • High parental expectations for school performance • High quality schooling • Visible role models • Economic opportunity in the local area 	Build protective factors through: <ul style="list-style-type: none"> • Universal Services • A strengths-based approach • Focus on communities and families
Layer 2 – Early Risk	<ul style="list-style-type: none"> • Deprivation • Lack of social infrastructure • Crime and ASB in the community • Low confidence in civic institutions 	<ul style="list-style-type: none"> • Unstable home environments • Victim of bullying 	<ul style="list-style-type: none"> • Poverty • Unstable home environment • Victim of bullying 	<ul style="list-style-type: none"> • Underdeveloped communication and language skills • Low school readiness • Negative experiences at school 	Identification of vulnerability and early intervention through a coordinated and capable cross-system workforce.
Layer 3 – Accumulating Risk	<ul style="list-style-type: none"> • Exposure to violent crime • Exposure to gang activity 	<ul style="list-style-type: none"> • Adverse childhood experiences 	<ul style="list-style-type: none"> • Adverse childhood experiences • Exposure to violence 	<ul style="list-style-type: none"> • Low attainment • Fixed-term exclusion • Poor economic prospects 	Joined-up, tailored, and sustained multi-agency support
Layer 4 – Risky Behaviour	<ul style="list-style-type: none"> • Exposure to the drug trade • Involvement in gang activity 	<ul style="list-style-type: none"> • Relationship breakdown • Missing and/or homelessness • Gang affiliation 	<ul style="list-style-type: none"> • Multiple and/or severe trauma • Substance use 	<ul style="list-style-type: none"> • Multiple fixed-term exclusions • Permanent exclusion • Low attainment • Few/no qualifications 	Trauma-informed practice, non-punitive pathways, and access to second chances
Layer 5 – Involvement in Serious Youth Violence	<ul style="list-style-type: none"> • Entrenchment in gangs • Weapon possession 	<ul style="list-style-type: none"> • Isolation from family • Homelessness • Exploitative relationships 	<ul style="list-style-type: none"> • Multiple severe trauma • Maladaptive coping mechanisms 	<ul style="list-style-type: none"> • Not in education, employment, or training • Very poor economic prospects 	A dual approach of enforcement and reintegration

Summary of the Model