

DEVELOPMENT CONTROL PERFORMANCE STATISTICS

**NATIONAL INDICATOR NI 157 -
DETERMINING PLANNING APPLICATIONS**

July 2009 Performance

In July 2009 there were 167 planning applications determined, with performance in each category as follows -

80% of major applications determined within 13 weeks (4 out of 5 cases)

68% of minor applications were determined within 8 weeks (30 out of 44 cases)

83% of other applications were determined within 8 weeks (98 out of 118 cases)

For an explanation of the categories see Appendix I

Year Performance – 2009/10

In the financial year 2009/10, up to the end of July, there were 554 planning applications determined, with performance in each category as follows -

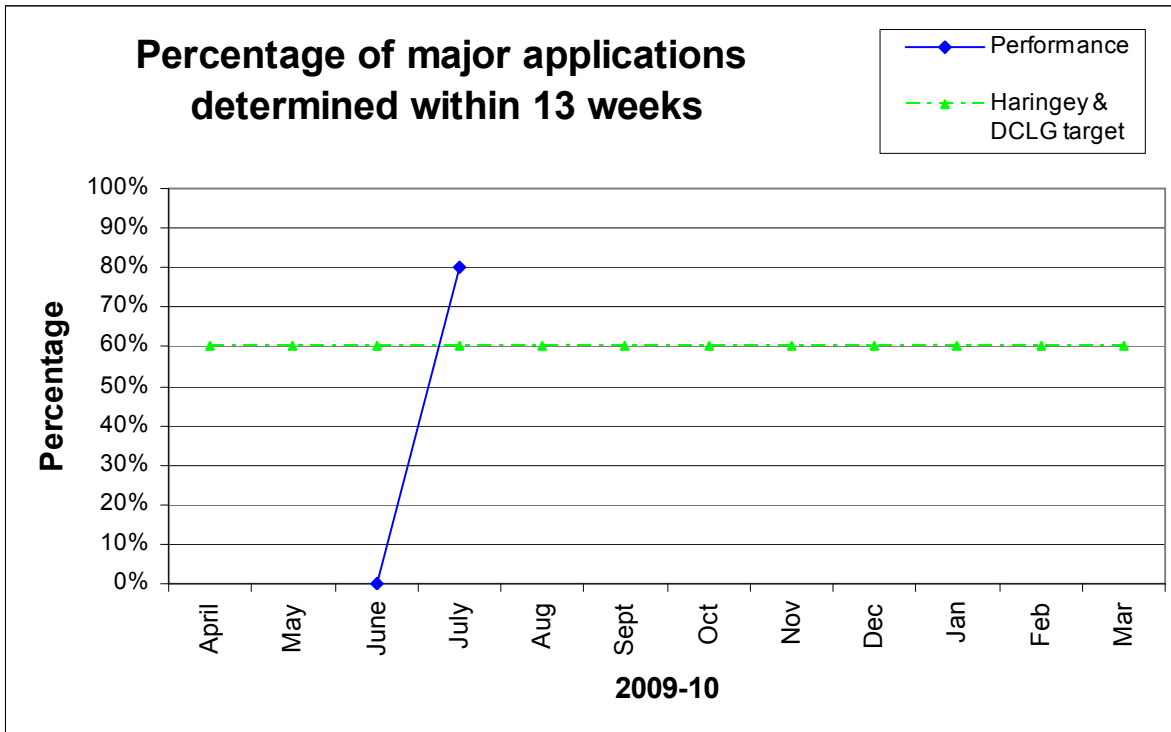
67% of major applications were determined within 13 weeks (4 out of 6)

77% of minor applications were determined within 8 weeks (93 out of 121 cases)

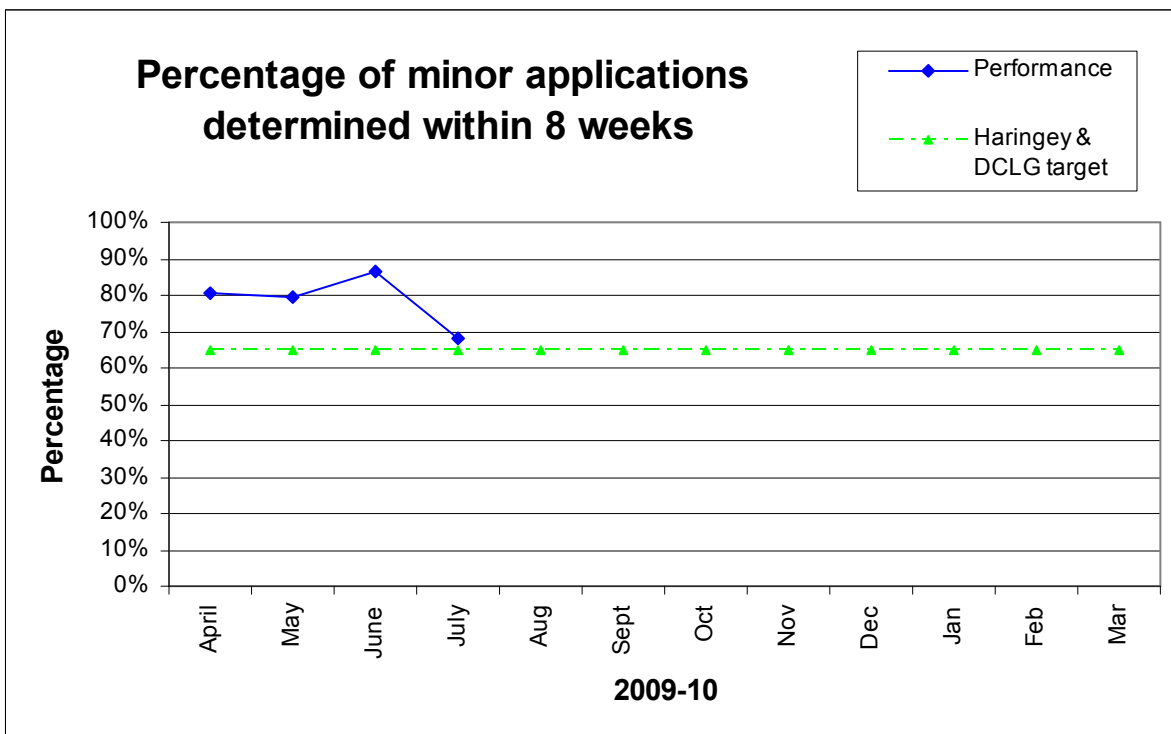
89% of other applications were determined within 8 weeks (382 out of 427 cases)

The monthly performance for each of the categories is shown in the following graphs:

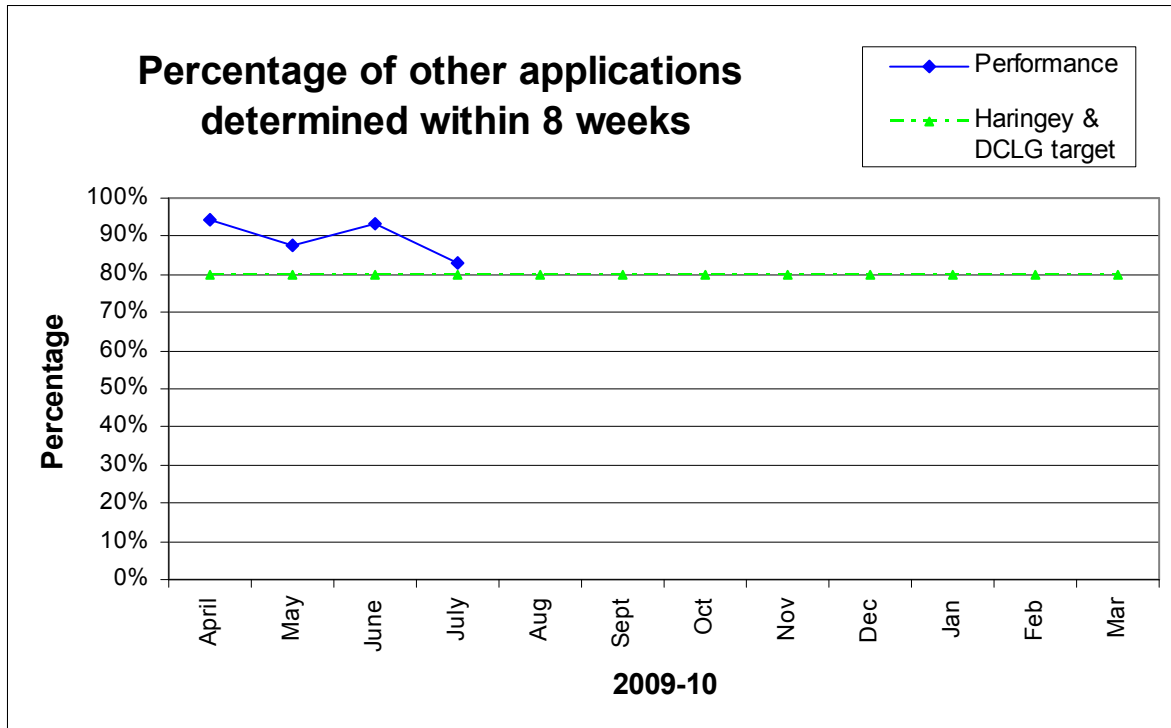
Major Applications 2009/10



Minor Applications 2009/10



Other applications 2009/10



Last 12 months performance – August 2008 to July 2009

In the 12 month period August 2008 to July 2009 there were 1716 planning applications determined, with performance in each category as follows -

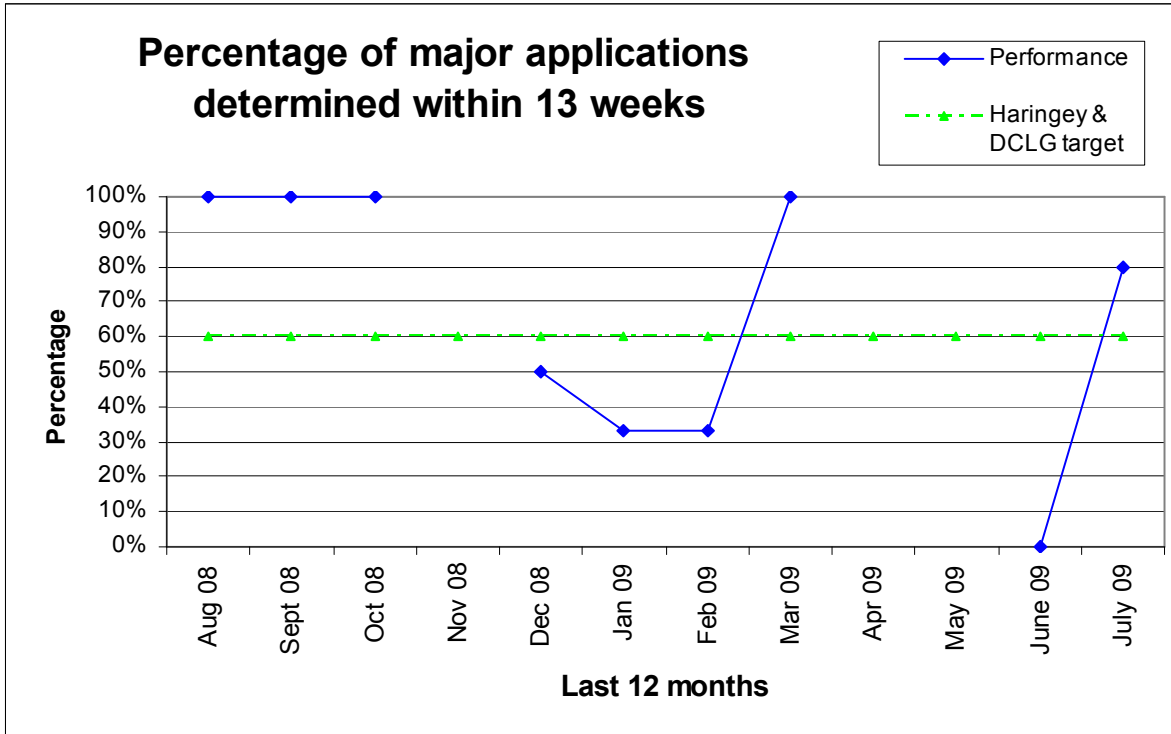
71% of major applications were determined within 13 weeks (17 out of 24)

79% of minor applications were determined within 8 weeks (347 out of 438 cases)

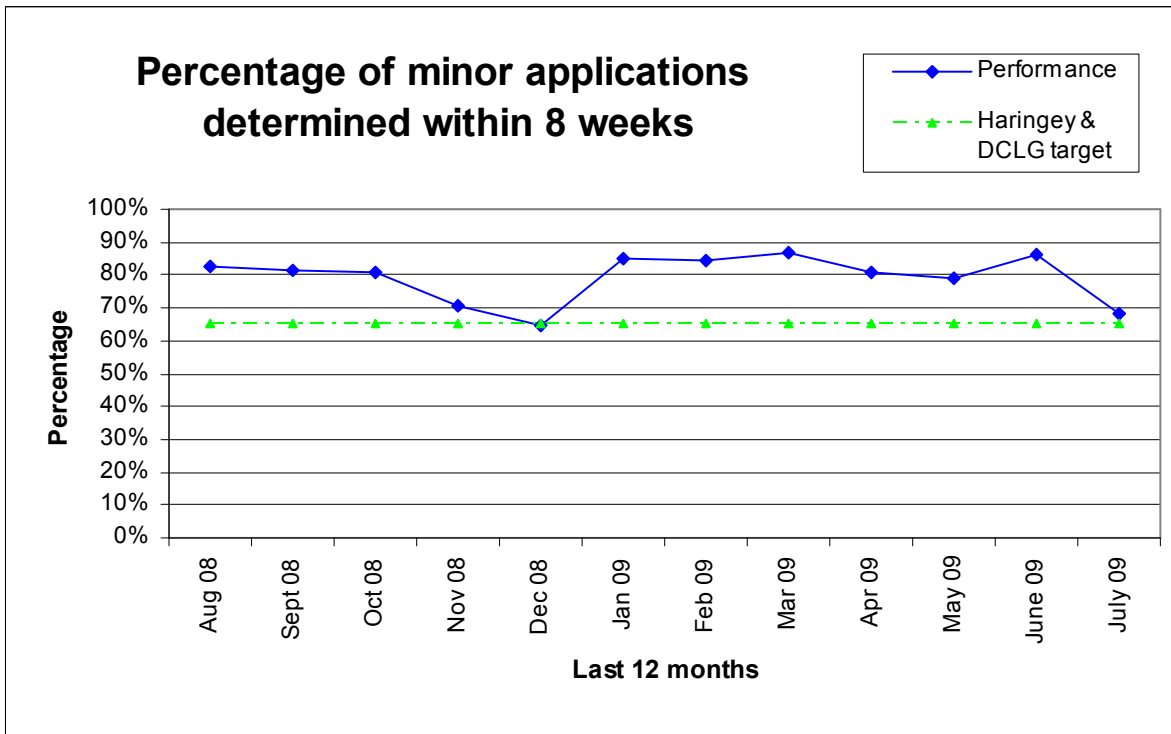
88% of other applications were determined within 8 weeks (1109 out of 1254 cases)

The 12 month performance for each category is shown in the following graphs:

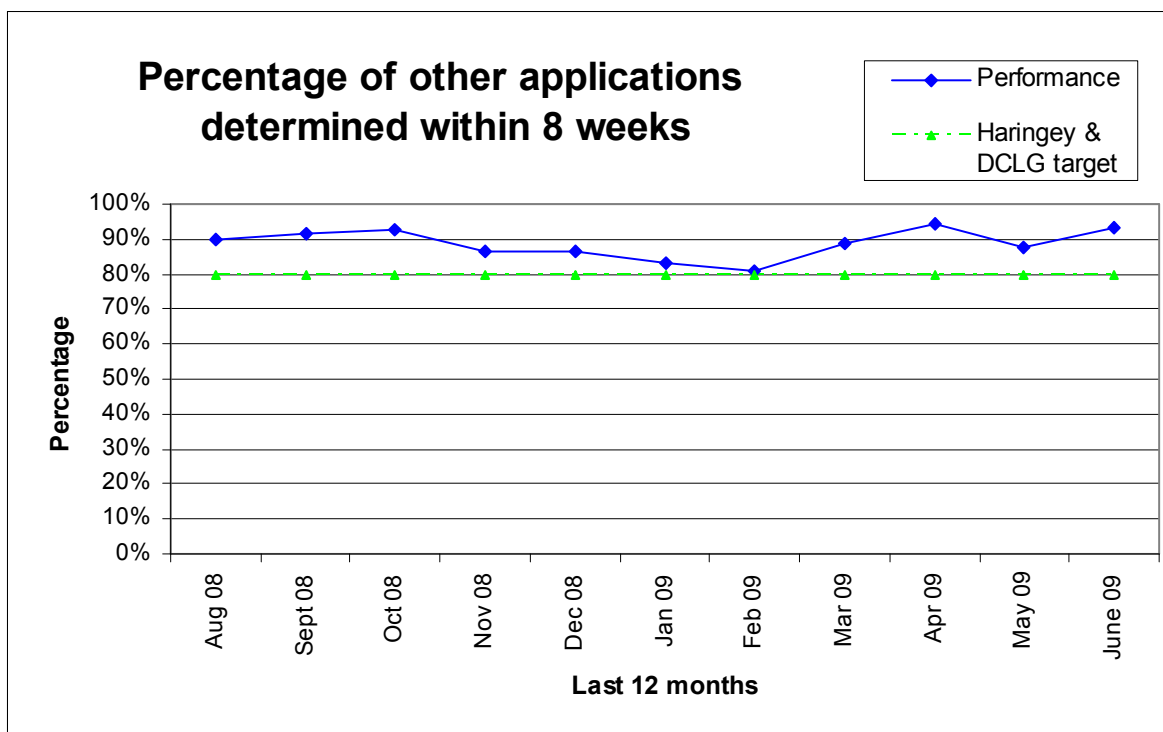
Major applications – last 12 months



Minor applications – last 12 months



Other applications – last 12 months



Background/Targets

NI 157 (formerly BV 109) is one of the Department for Communities and Local Government (DCLG) National Indicators for 2009/10.

It sets the following targets for determining planning applications:

- a. 60% of major applications within 13 weeks
- b. 65% of minor applications within 8 weeks
- c. 80% of other applications within 8 weeks

Haringey has set its own targets for 2009/10 in relation to NI 157. These are set out in Planning & Regeneration (P&R) Business Plan 2009-12 and are to determine:

- a. 60% of major applications within 13 weeks
- b. 65% of minor applications within 8 weeks
- c. 80% of other applications within 8 weeks

Appendix I

Explanation of categories

The NI 157 indicator covers planning applications included in the DCLG PS1/2 statutory return.

It *excludes* the following types of applications - TPO's, Telecommunications, Reserve Matters and Observations.

The definition for each of the category of applications is as follows:

Major applications -

For dwellings, where the number of dwellings to be constructed is 10 or more
For all other uses, where the floorspace to be built is 1,000 sq.m. or more, or where the site area is 1 hectare or more.

Minor application -

Where the development does not meet the requirement for a major application nor the definitions of Change of Use or Householder Development.

Other applications -

All other applications, *excluding* TPO's, Telecommunications, Reserve Matters and Observations.

DEVELOPMENT CONTROL PERFORMANCE STATISTICS

GRANTED / REFUSAL RATES FOR DECISIONS

July 2009 Performance

In July 2009, excluding Certificate of Lawfulness applications, there were 141 applications determined of which:

76% were granted (107 out of 141)

24% were refused (34 out of 141)

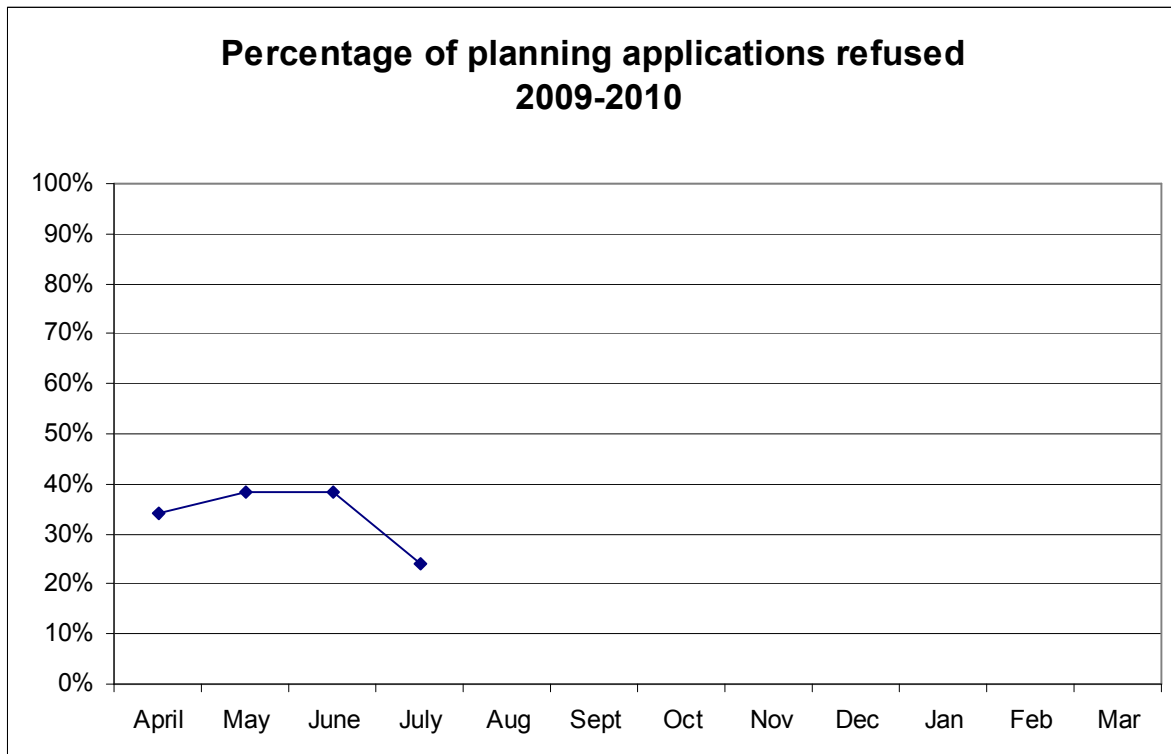
Year Performance – 2009/10

In the financial year 2009/10 up to the end of July, excluding Certificate of Lawfulness applications, there were 464 applications determined of which:

67% were granted (311 out of 464)

33% were refused (153 out of 464)

The monthly refusal rate is shown on the following graph:



DEVELOPMENT CONTROL PERFORMANCE STATISTICS

LOCAL INDICATOR (FORMERLY BV204) - APPEALS AGAINST REFUSAL OF PLANNING PERMISSION

July 2009 Performance

In July 2009 there were 6 planning appeals determined against Haringey's decision to refuse planning permission, with performance being as follows -

50.0% of appeals allowed on refusals (3 out of 6 cases)

50.0% of appeals dismissed on refusals (3 out of 6 cases)

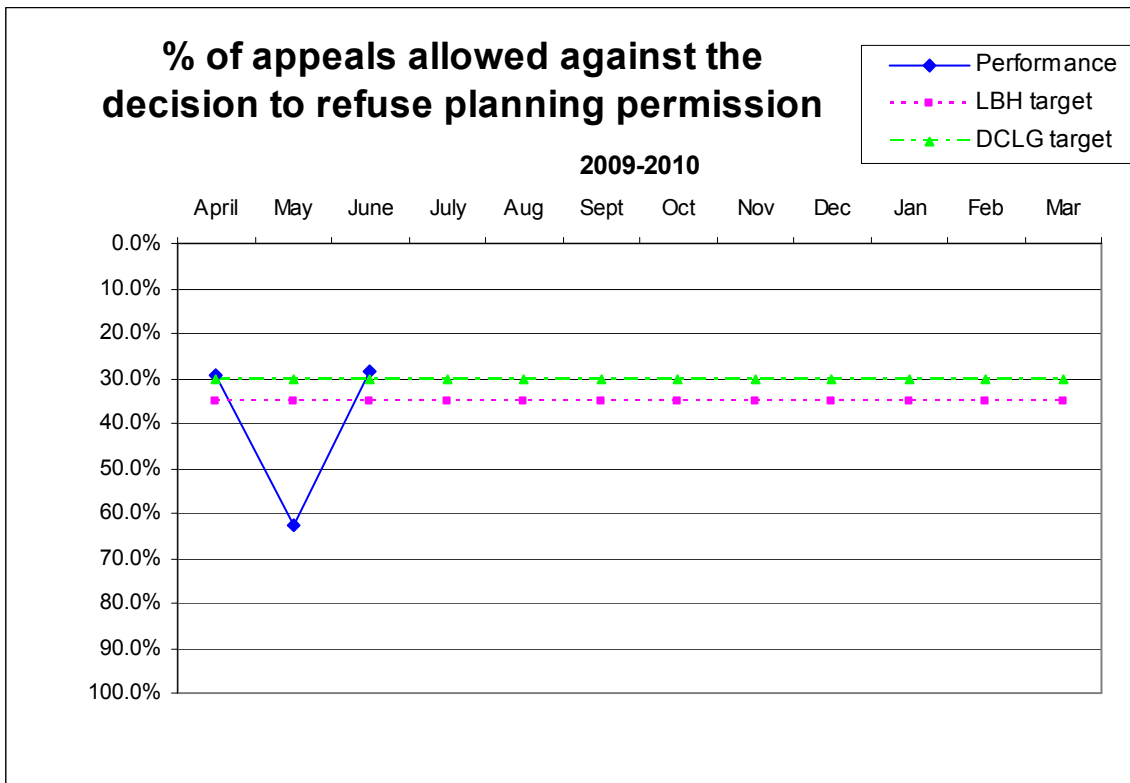
Year Performance – 2009/10

In the financial year 2009/10, up to the end of July, there were 38 planning appeals determined against Haringey's decision to refuse planning permission, with performance being as follows -

39.5% of appeals allowed on refusals (15 out of 38 cases)

60.5% of appeals dismissed on refusals (23 out of 38 cases)

The monthly performance is shown in the following graph:



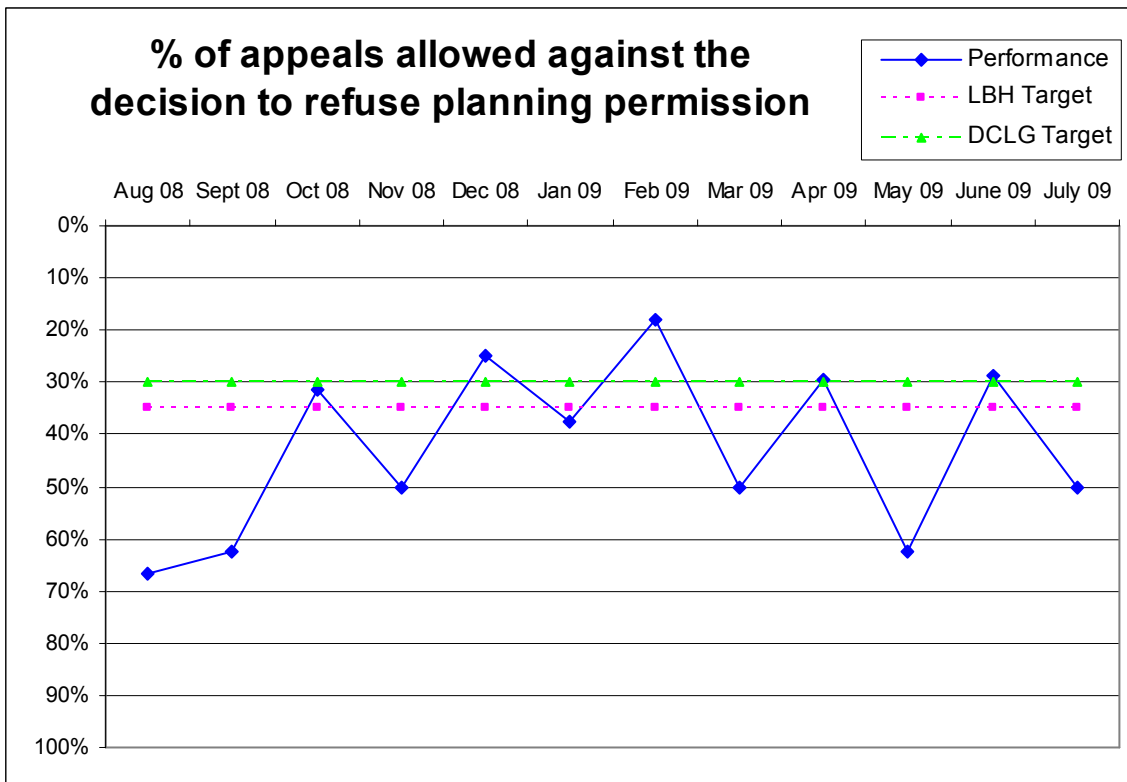
Last 12 months performance – August 2008 to July 2009

In the 12 month period August 2008 to July 2009 there were 126 planning appeals determined against Haringey's decision to refuse planning permission, with performance being as follows -

38.1% of appeals allowed on refusals (48 out of 126 cases)

61.9% of appeals dismissed on refusals (78 out of 126 cases)

The monthly performance for this period is shown in the following graph:



Background/Targets

This is not included in DCLG's National Indicators for 2009/10. However it has been retained as a local indicator.

It sets a target for the percentage of appeals allowed against the authority's decision to refuse planning permission.

The target that was set by DCLG in 2007/08 was 30%^

Haringey has set its own target for 2009/10 in relation to this local indicator. This is set out in P&R Business Plan 2009-12.

The target set by Haringey for 2009/10 is 35%

(^ The lower the percentage of appeals allowed the better the performance)